



CENTRO INTERPRETATIVO



da *história* da

# BACALHAU

*An epic story that  
ends at the table.*

LISBOA

Terreiro do Paço, Torreão Nascente  
1100-148 | Lisboa, Portugal

[historiabacalhau.pt](http://historiabacalhau.pt)  
[info@historiabacalhau.pt](mailto:info@historiabacalhau.pt)





# Festival KINO

## German Expression Film Festival

From 2<sup>nd</sup> to 8<sup>th</sup> February; Cinema São Jorge, Av. da Liberdade; Cinemateca Portuguesa, Rua Barata Salgueiro (metro: Avenida). Tickets: 4 euros, general. [More information at: goethe.de](http://goethe.de)

This year, the German Expression Film Festival celebrates its 20<sup>th</sup> edition. The first week will take place at Cinema São Jorge, where 15 films will be shown, divided into three sections: 'Visions', dedicated to the big recent cinematographic works; 'Perspectives', which looks into the first works by German directors; and 'Realities', more dedicated to documentaries, such as 'When spring came to Bucha'. The second week takes place at Cinemateca Portuguesa, with a special programme focusing on German cinema. At the end of the festival, there will also be a party with music and entertainment which will continue late into the night.



## Festival Montepio às vezes o amor

14<sup>th</sup> February; at 9:30 pm; Campo Pequeno (metro: Campo Pequeno); Teatro Tivoli BBVA (metro: Avenida).

Tickets: from 15 to 20 euros. More information at: [asvezesoamor.pt](http://asvezesoamor.pt)

The Valentine's Day music festival takes place throughout the country and in Lisboa it is celebrated with two concerts, one by Lena d'Água and another which was specially created for the occasion by Jorge Palma and is called As Canções de Amor. In Teatro Tivoli BBVA, Lena d'Água will take the audience on a journey to relive some of the most important songs of her repertoire from the 1980s until today. 'Sempre que o amor me quiser', 'Demagogia', 'Grande Festa' and 'Hipocampo' are songs which will certainly be part of the set list. For the special concert, which was specifically prepared for the festival, Jorge Palma takes the stage at Campo Pequeno accompanied by an orchestra and several special guests to perform his most iconic love songs.



# Festival Rescaldo

From 15<sup>th</sup> to 19<sup>th</sup> of February; in various cultural spaces in Lisboa. Tickets: from 5 to 8 euros.

More information at: [festival-rescaldo.info](http://festival-rescaldo.info)

Festival Rescaldo is back to experience national creativity, among contemporary academic composition, self-taught experimentation, jazz, electronics and some unique collaborations designed exclusively for the event. In the 13<sup>th</sup> edition, the five-day program in five different spaces emphasizes aesthetic, social and generational diversity, bringing them together to make one feel the infinite sound possibilities. In total, Rescaldo hosts 11 unique concerts and even a workshop for children. The performances begin at Galeria Zé Dos Bois (ZDB), continue on Thursday, for DAMAS, moving, the following day, to Teatro do Bairro Alto, then to MAAT and ending on the 19<sup>th</sup> at St. George Church.



## Play Festival

From 25<sup>th</sup> February until 5<sup>th</sup> March; Cinema São Jorge, Av. da Liberdade; Cinemateca Portuguesa, Rua Barata Salgueiro (metro: Avenida). Tickets: Children from 2 to 16 years old, 2,80 euros; adults, 3,50 euros. More information at: [playfest.pt](http://playfest.pt)

Play, the International Children & Youth Film Festival, is back in Lisboa with the most recent film productions dedicated to audiences until 16 years of age. With a selection of films from all corners of the world in form of short or feature films, the Play Festival presents what is shown in the international children film festivals. In between the film screenings, this event offers workshops and recreational activities. For the older audience, there is also a debate on the topic of national children's film from the point of view of the industry.



# SINTRA

## MITOS E LENDAS

C E N T R O I N T E R A T I V O

## ***Come and discover the mysteries of Sintra***

We will take you on an amazing journey through the stories and places that have imbued this region with mystery since time immemorial and have made Sintra one of the most popular destinations in the world.

Stories of legends, reality mixed with fiction, mythical beings and distinguished visitors. See it all in 4D movies, holograms, videomapping and other technologies...

Sintra Tourism Office  
Praça da República, N.º 23, 2710-616 Sintra  
Tel. 219 231 157 • [info@lismarketing.pt](mailto:info@lismarketing.pt)

Every day from 10am to 6.30pm  
(last entry at 5.30pm)

[www.visitlisboa.com](http://www.visitlisboa.com)





# City of Lisboa

## Useful Information

Lisboa is the capital of Portugal and the country's biggest city, located on the estuary of the Tejo river, on the European Atlantic coast. It is continental Europe's westernmost capital. Portugal's official language is Portuguese. Derived from Latin roots, Portuguese is the third most spoken European language in the world, with around 200 million speakers.

Around 3 million people live in the Lisboa region, with around 600 thousand living in the capital itself. The Portuguese Constitution allows religious freedom, with various religions being practised in Portugal.

Electric voltage: 230 / 400 volts, on a 50-hertz frequency. The electric sockets adhere to European standards. Blade plugs (US standard) must be used in conjunction with a 230 volts transformer, as well as an adaptor

In Lisboa winters are mild and summers hot, though moderated by its location near the sea. During spring and autumn there are usually sunny days with mild temperatures.

## Local currency and Payments

The Euro is Portugal's official currency, having been introduced in January 2002. 1 Euro is divided into 100 cents. There are coins of 1, 2, 5, 10, 20 and 50 cents and 1 and 2 Euros. The bills can be distinguished by their size and colour and have the following face values: 5, 10, 20, 50, 100, 200 and 500 Euros. In Portugal, payments can be made in cash, bank transfer, cheque, credit cards and debit cards.

	Jan/Mar	Apr/Jun	Jul/Sep	Oct/Dec
Air Temperature	17,1°C • 62,8°F	21,8°C • 71,2°F	26,3°C • 79,3°F	17,2°C • 53°F
Sea Temperature	14,9°C • 58,8°F	17,5°C • 63,5°F	19,5°C • 67,1°F	16,1°C • 60°F

## Tax Free

Those who live outside the EU can benefit from VAT exemption in Portugal if they make purchases worth at least 50 euros and only for private use. For this purpose, you must present an identification document (passport or other official) to the seller, who will provide proof of the purchase registration. The process is completed when leaving the country, through an electronic terminal in the customs area of the airport, to certify the export of the goods acquired in Portugal and to know whether or not is entitled to a VAT refund.





## Timetables

**Buses:** everyday from 5.30am to 12.30am.

Night service "rede da madrugada" from 12.30am to 5.30 am.

**Metro:** everyday from 6.30am to 1am

**Banks:** Monday to Friday from 8:30am to 3pm

**Shopping Centres:** everyday from 10am to 10pm

**Shopping:** Monday to Friday and Saturdays from 10am to 7pm

**Restaurants:** lunch from 12pm to 3pm, dinner from 7pm to 10pm

**Post:** Monday to Friday 9am to 6pm.

The post offices at Praça dos Restauradores, Cabo Ruivo and the Airport are open on weekdays until 8pm, and with restricted timetables on weekends.

**Embassies:** Monday to Friday from 9am to 3pm

**Pharmacies:** Monday to Friday 9am to 7pm, some pharmacies close at lunchtime. Saturdays from 9am to 1pm. When closed all pharmacies indicate the nearest open pharmacy on duty, where there is a 24-hour service.

## Health

The Hospital Emergency Services must only be used for serious emergencies.

In order to have access to this service, E.U. citizens who are non-resident in Portugal must show their passport or ID card and E111 and E112 forms.

QUALIHEALTH  
 Medical care for foreign patients  
 24/hours  
 T. +351 211 301 075  
 www.qualihealth.eu

## Measures - Conversion chart

1 cm = 0,393 inch  
 1 metro = 3,28 feet 1.09 yard  
 1 km = 0,62 mile

1 litro = 0,26 gallon (USA)  
 0,22 gallon (UK)  
 1kg = 2.204 pounds

## Useful Telephone Numbers

Telephone codes

International calls:  
 00 + country area code

Portugal area code:  
 Portugal +351

National Emergency Number:  
 112

Police –Tourism Station at Praça dos Restauradores:  
 (+351) 213 421 634 | (+351) 213 421 623

Fire Service:  
 (+351) 213 422 222

Trains (CP):  
 (+351) 808 208 208

Buses:  
 (+351) 213 613 000

Metro:  
 (+351) 217 980 600

Taxi - Autocoope:  
 (+351) 217 932 756

Lisboa Airport (arrivals and departures)  
 (+351) 218 413 700

\*Ask Me\* Tourism Office - Airport:  
 (+351) 218 450 660

## Time Differences (GMT/UTC GMT/UTC +1 in Summer)

-8h: USA - Los Angeles  
 -5h: USA - New York  
 -3h: Brazil - Brasilia  
 =: UK - London  
 +2h: South Africa - Capetown  
 +1h: France – Paris; Germany – Bonn;  
 Holland – Amsterdam; Italy – Rome;  
 Norway – Oslo; Spain – Madrid;  
 Sweden – Stockholm  
 +9h: Japan - Tokyo  
 +10h: Australie - Canberra



## Eros Ramazzotti

---

3<sup>rd</sup> and 4<sup>th</sup> February; at 9 pm; Altice Arena, Parque das Nações (metro: Oriente | buses: 26B, 208, 210, 705, 708, 725, 728, 744, 759, 782 | train: Oriente). Tickets: from 25 to 150 euros. More information at: [vibesandbeats.pt](http://vibesandbeats.pt)

---

Lisboa is one of the chosen cities to welcome Eros Ramazzotti's world tour. Considered to be one of the greatest singers and songwriters in the world, the Italian presents 'Battito Infinito', which is a journey through the artist's big hits and, at the same time, is a live presentation of a new album. With a message which translates as an anthem to freedom and an invitation to loving without limits, borders or barriers, Eros Ramazzotti was deeply involved in every little detail and every step of the production. 'I followed each step of this work, taking care of each detail and nuance, and in each one of these songs there will be a little part of me and my story. I can hardly wait to meet my fans again', says the artist.

# Guide



[www.visitlisboa.com](http://www.visitlisboa.com)

**MONUMENTS**

**MUSEUMS**

**CULTURE AND LEISURE**

**RESTAURANTS**

**DISCO AND PUBS**

**ACCOMMODATION**

**GET TO KNOW LISBOA**

**SHOPPING**

**TRANSPORT WITH DRIVER**

**RENT A CAR**

**GOLF**



**LISBOA CARD PARTNER**

**CREATE YOUR PERSONAL TOUR AT**  
[www.visitlisboa.com/en](http://www.visitlisboa.com/en)



#### INFOLISBOA

Tourist information line  
(Free calls)  
**T. 800 500 503**  
(International calls)  
**T. (+351) 210 079 347**  
From Monday to Friday  
**10 am-7 pm**

#### ASK ME LISBOA

Aeroporto de Lisboa  
Arrivals, Aeroporto  
**T. (+351) 218 450 660**  
**7am-10pm**  
aeroreservas@lismarketing.pt

#### ASK ME LISBOA

Santa Apolónia CP Station  
Largo dos Caminhos  
de Ferro, Lisboa  
**T. (+351) 915 789 923**  
**10 am-1 pm | 2 pm-7 pm**  
**Closed on Mondays  
and Tuesdays**  
stapolonia@lismarketing.pt

#### ASK ME LISBOA

Palácio Foz  
Praça dos Restauradores,  
Lisboa  
**T. (+351) 213 463 314**  
**10am-6:30pm**  
palaciofoz@lismarketing.pt

#### ASK ME LISBOA

Rossio CP Station  
Rua 1.º de Dezembro, Lisboa  
**T. (+351) 914 210 650**  
**9 am-1 pm | 2 pm-6 pm**  
**Closed on Sundays  
and Mondays**  
rossioestacao@lismarketing.pt

#### ASK ME LISBOA

Rossio  
Praça D. Pedro IV, Lisboa  
**T. (+351) 910 518 004**  
**10am - 1pm | 2pm - 7pm**  
**Closed on Sundays and  
Mondays**  
rossio@lismarketing.pt

#### ASK ME LISBOA

Arco Rua Augusta  
Rua Augusta, 2, Lisboa  
**T. (+351) 210 998 599**  
**10am-7pm**  
**(last entry at 6:45pm)**  
arcoaugusta@lismarketing.pt

#### ASK ME LISBOA

Interpretive Center  
History of Cod  
Terreiro do Paço - Torreão  
Nascente  
**T. (+351) 211 126 155**  
**10am - 1pm | 2pm - 7pm**  
**(last entry at 6pm)**  
info@historiabacalhau.pt

#### ASK ME LISBOA

Lisboa Story Centre  
Praça do Comércio,  
78 - 81, Lisboa  
**T. (+351) 211 941 099**  
**10am-7pm**  
**(last entry at 6pm)**  
lisboastorycentre  
@lismarketing.pt

#### ASK ME LISBOA

Terreiro do Paço  
Praça do Comércio, Lisboa  
**T. (+351) 210 312 810**  
**10am-7pm**  
terreirodopaco@lismarketing.pt

#### ASK ME LISBOA

Centro Tejo  
Station Sul e Sueste  
Terreiro do Paço  
**T. (+351) 211 163 426**  
**10am - 1pm | 2pm - 7pm**  
centrotejo@lismarketing.pt

#### ASK ME LISBOA

Doca da Marinha  
Av. Infante D. Henrique S/N  
**T. (+351) 211 163 427**  
**10am - 1pm | 2pm - 7pm**  
**Closed on Wednesdays and  
Thursdays**  
docamarinha@lismarketing.pt

#### ASK ME LISBOA

Cais do Sodré  
Praça do Duque de Terceira,  
1200-161 Lisboa  
**T. (+351) 912 484 108**  
**9am-1pm | 2pm-6pm**  
caisdosodre@lismarketing.pt

#### ASK ME LISBOA

Belém Mosteiro  
dos Jerónimos  
Jardim Vasco da Gama,  
1400-206 Lisboa  
**T. (+351) 910 517 981**  
**10am-1pm | 2pm-6pm**  
**Closed on Mondays, 1<sup>st</sup> and 3<sup>rd</sup>**  
**Sunday of each month**  
belem@lismarketing.pt

#### ASK ME LISBOA

Torre de Belém  
Jardim Torre de Belém, Lisboa  
**T. (+351) 910 517 886**  
**9 am-1pm | 2pm-6pm**  
belemtorre@lismarketing.pt

#### ASK ME LISBOA

Pilar 7 Experience  
Av. da Índia, Pilar 7 da Ponte  
25 de Abril  
**T. (+351) 211 117 880**  
**10am-6pm**  
**(last entry at 5pm)**  
pilar7@lismarketing.pt  
**ASK ME SINTRA**  
NewsMuseum  
Rua Visconde de Monserrate  
26, Sintra  
**T. (+351) 910 495 618**  
**10am-6:30pm**  
**(last entry at 5:30pm)**  
newsmuseum@lismarketing.pt

#### ASK ME SINTRA

Mitos e Lendas  
Praça da República, 23, Sintra  
**T. (+351) 219 231 157**  
**10am-6:30pm**  
**(last entry at 5:30pm)**  
sintra@lismarketing.pt

#### ASK ME SINTRA

Sintra Estação  
Av. Dr. Miguel Bombarda,  
Sintra  
**T. (+351) 211 932 545**  
**9am-1pm | 2pm-5:30pm**  
sintraestacao@lismarketing.pt

#### ASK ME ARRÁBIDA

Travessa Frei Gaspar, 10,  
Setúbal  
**T. (+351) 916 442 247**  
**10am-1pm | 2pm-6pm**  
**Closed on Mondays**  
arrabida@lismarketing.pt

# Services and discounts included

## TOP TEN

Jerónimos Monastery	Free
Belém Tower	Free
Pilar7 Bridge Experience	Free
Lisboa Story Centre	Free
National Tile Museum	Free
National Coach Museum	Free
National Ancient Art Museum	Free
Sintra Mitos e Lendas	Free
Santa Justa Elevator	Free
Mafra National Palace	Free

## TRANSPORTS

METRO	Free
CARRIS	Free
AEROBUS	-25%
CP-Camios de Portugal	Free
FERTAGUS	Free

## MONUMENTS AND MUSEUMS

National Pantheon	Free
Ajuda National Palace	Free
Royal Treasury Museum	Free
Chiado Museum - National Museum of Contemporary Art	Free
National Ethnology Museum	Free
National Costume Museum	Free
National Museum of Theatre and Dance	Free
National Archaeology Museum	Free
National Music Museum	Free
Dr. Anastácio Gonçalves Museum-Residence	Free
Republican National Guard Museum	Free
Ceramics Museum - Sacavém	Free
Air Museum	Free
Batalha Monastery	Free
Alcoçaba Monastery	Free
Tomar Convent of Christ	Free
Museum of Neo Realism - Vila Franca de Xira	Free
Museum of the work Michel Giacometti	Free
Casa da Cerca - Museum of Contemporary Art - Almada	Free
Chapel of the Holy Spirit of the Mareantes - Sesimbra	Free
Setúbal Municipal Gallery	Free
Maritime Museum - Sesimbra	Free
Convento de Jesus - Museum of Setúbal	Free
Mourisca Tide Mill - Herdade da Mourisca	Free
Newspaper Museum	Free
Arpad Szenes - Vieira da Silva Foundation	-50%

Water Museum	-50%
Museum of Macau Cultural and Scientific Centre	-50%
Communications Museum	-50%
São Roque Museum	-40%
Medeiros e Almeida Foundation	-40%
Museum Sporting	-40%
Carris Museum	-30%
Future Museum of Contemporary Art MAC/CBB	-20%
Fragata D. Fernando II e Glória	-20%
Museum Calouste Gulbenkian	-20%
Calouste Gulbenkian Museum - Modern Collection	-20%
Ruins of Igreja do Carmo - Archaeological Museum	-20%
Quinta da Regaleira	-20%
Fado Museum	-20%
Amália Rodrigues Museum - Residence	-20%
Museum of Mechanical Music - Palmela	-20%
Studio-museum Júlio Pomar	-20%
The Orient Museum	-20%
Museum of Aljube	-20%
Pharmacy Museum	-20%
Museum School of Portuguese Decorative Arts	-20%
Lisbon Cathedral	-20%
Church Tower in St. Jorge's Castle	-20%
Navy Museum	-20%
Queluz National Palace	-15%
Benfica Museum / Cosme Damião	-15%
MAAT - Museum of Art, Architecture and Technology	-15%
Sintra National Palace	-10%
Pena National Palace and Park	-10%
Palácio Biester (Sintra)	-10%
Natural History Science Museum	-10%

Cable Car Parque das Nações	-10%
Culturgest - Exhibitions	-10%

## TOURS


Lisbon Walker	-33%
Barco Varino da Liberdade - Vila Franca de Xira	-25%
Tuk Guide Portugal	-25%
CitySightseeing	-25%
VR Tours Lisboa	-25%
Naturway	-20%
Estrela D'Alva	-20%
Selection Tours	-20%
Sado Arrábida	-20%
Nosso Tejo	-20%
BOOST Portugal	-20%
SeaEO Tours	-15%
Hippotrip	-15%
Cityrama	-15%
PalmaYachts	-15%
Sailing Lovers	-15%
Lisbon Destination Tours	-15%
Lisbon by Boat	-15%
Cooltour Lisbon	-15%
Vortigem Azul	-10%
Yellow Boat River Tour	-10%
Yellow Bus - Hop on - off	-10%
Yellow Bus - Tramcar Tour	-10%
Lisboat	-10%
Inside Lisbon	-10%
FRS Portugal	-10%
Vertente Natural	-10%
Blue Cruises	-10%
Setúbal Alive	-10%

## VISITOR ATTRACTIONS

Rua Augusta Arch	Free
Cold Greenhouse	Free
Codfish History Interpretation Centre	Free
CIRÉS - Roaz Interpretive Center of the Sado Estuary	Free
EVOA - Birdwatching Tagus River	-30%
Navy Planetarium	-20%
Discoveries Monument	-20%
Belém Cultural Centre	-20%
Vasco da Gama Aquarium	-20%
José Saramago Foundation	-1€
Lisboa Aquarium	-15%
Knowledge Pavilion - Living Science	-15%
Lisboa Zoo	-15%
Parques de Sintra - Monte Lus: Capuchos Convent /	
Monserrate Park / Moorish Castle	-15%
O Cubo - Immersivus Gallery Lisboa	-15%

## OTHER

Viniportugal	-20%
Amoreiras Shopping Center	-5€
Amoreiras Shopping Center Miradouro / Belvédere	-1€
Casa da Baía - Setúbal	-15%
Merceria Confiança - Setúbal	-15%
Casa do Turismo	-15%
El Corte Ingles	Welcome PACK + 10%
Lisboa Shop - Terreiro do Paço	-10%
Freeport Fashion Outlet	-10%
Fado in Chiado	-10%
Sant'Anna Faience and Tile Factory	-5%

 Temporarily closed

## Closing days

### MONDAY

Jerónimos Monastery
Belém Tower
National Tile Museum
National Coach Museum
National Ancient Art Museum
National Pantheon
Chiado Museum - National Museum of Contemporary Art
National Ethnology Museum
National Costume Museum
National Museum of Theatre and Dance
Dr. Anastácio Gonçalves Museum-Residence
Ceramics Museum - Sacavém
Air Museum
Museum of Neo Realism - Vila Franca de Xira
Museum of the work Michel Giacometti
Casa da Cerca - Museum of contemporary Art - Almada
Setúbal Municipal Gallery
Convento de Jesus - Museum of Setúbal
Maritime Museum - Sesimbra
Mourisca Tide Mill - Herdade da Mourisca
Arpad Szenes - Vieira da Silva Foundation

Water Museum
Museum of Macau Cultural and Scientific Centre
São Roque Museum
Museum Sporting
Fragata D. Fernando II e Glória
Fado Museum
Amália Rodrigues Museum - Residence
Museum of Mechanical Music - Palmela
Studio-museum Júlio Pomar
The Orient Museum
Museum of Aljube
Natural History Science Museum
Cold Greenhouse
Navy Planetarium
EVOA - Birdwatching Tagus River
Discoveries Monument
Knowledge Pavilion - Living Science
Culturgest - Exhibitions

### TUESDAY

Mafra National Palace
Museum School of Portuguese Decorative Arts
MAAT - Museum of Art, Architecture and Technology
Arpad Szenes - Vieira da Silva Foundation
Museum Calouste Gulbenkian
Museum of Mechanical Music - Palmela

### WEDNESDAY

Museum of Mechanical Music - Palmela
Ajuda National Palace

### THURSDAY

Museum of Mechanical Music - Palmela
Museum of Mechanical Music - Palmela

### SATURDAY

Museum of Macau Cultural and Scientific Centre
--

### SUNDAY

National Music Museum
Republican National Guard Museum
Museum of Macau Cultural and Scientific Centre
Portuguese Communications Foundation
Medeiros e Almeida Foundation
Carris Museum
Carmo Archeological Museum
Lisbon Cathedral
José Saramago Foundation
Pharmacy Museum

**Lisbon**  
Feel the city.



Prices

24 h

48 h

72 h

ADULT

21 euros

35 euros

44 euros

CHILDREN (4-15)

13,5 euros

19,5 euros

23 euros

Prices valid from april 1<sup>st</sup> 2022 until march 31<sup>st</sup> 2023

# Lisbon

Feel the city



Travel around town **free on public transport**, visit **39 museums and monuments for free** and take advantage of more than **80 different discount opportunities.**

[www.visitlisboa.com](http://www.visitlisboa.com)  
online information and sales



**PATRIMONIO CULTURAL**  
Direção-Geral do Património Cultural

**CP**  
COMBOIOS DE PORTUGAL

carris 



  
**fertagus**



### RUA AUGUSTA ARCH

LISBOA CARD PARTNER

Symbol of a triumphant Lisboa, this monument not only offers a magnificent view of the city, it tells a part of its history.

Rua Augusta, 4, Lisboa | T. (+351) 210 998 599  
10am-7pm. Last entry 15 minutes before closing.  
[www.visitlisboa.com](http://www.visitlisboa.com)



### DISCOVERIES MONUMENT

LISBOA CARD PARTNER

Riverside monument built in 1960 to commemorate the 500<sup>th</sup> anniversary of the death of Infante D. Henrique, promoter of the Discoveries. Views of Lisbon and the Tagus River from the top.

Av. Brasília, Lisboa | T. (+351) 213 031 950  
March to September, 10am-7pm (last entry at 6.30pm). October to February, 10am-6pm (last entry at 5.30pm). Open on Monday from May until September. Closed: January 1, May 1, December 25.  
🚗 727, 728 🚏 15 Belém (Cascais line)  
[www.padraodosdescobrimentos.pt](http://www.padraodosdescobrimentos.pt)



### ST GEORGE'S CASTLE

Testament to the city's past. Panoramic views over the city.

R. de Santa Cruz do Castelo, Lisboa  
| T. (+351) 218 800 620

November to February, 9am-6pm (last entry at 5.30pm). March to October, 9am-9pm (last entry at 8.30pm). Periscope - Tower of Ulysses: 10am-5pm (depending on weather conditions).

🚗 737 🚏 12, 28  
[www.castelodesaojorge.pt](http://www.castelodesaojorge.pt)



### JERÓNIMOS MONASTERY

LISBOA CARD PARTNER

16<sup>th</sup> century building. UNESCO World Heritage classification. Commemorates the Portuguese Discoveries.

Praça do Império, Lisboa | T. (+351) 213 620 034/38  
October to April, 10am-5.30pm (last entry at 5pm). May to September, 10am-6.30pm (last entry at 6pm). Closed: Monday, January 1, Easter Sunday, May 1, June 13 and December 24 and 25.  
🚗 727, 728, 729, 751 8 🚏 15 Belém (Cascais line)  
[www.mosteirojeronimos.pt](http://www.mosteirojeronimos.pt)



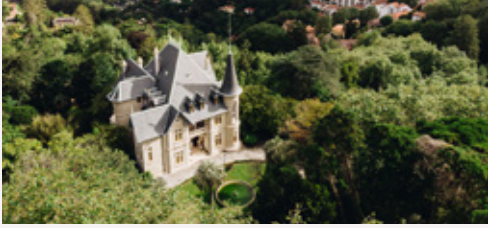
### CAMPO PEQUENO

Campo Pequeno is a historic building, regarded from a bullfighting perspective as the Bullfighting on Horseback Capital of the World. Open all year.

Centro de Lazer do Campo Pequeno, Lisboa  
T. (+351) 217 998 450  
🚗 744, 783, 754, 736, 727, 738 🚏 Campo Pequeno

🚏 Entrecampos  
[www.campo Pequeno.com](http://www.campo Pequeno.com)

## MONUMENTS



### BIESTER PALACE LISBOA CARD PARTNER

The Biester Palace is located in the heart of Sintra, perfectly integrated into the stunning scenery that made the village of Sintra famous as the world capital of Romanticism.

Av. Almeida Garrett, 1A, Sintra | T. (+351) 218 708 800  
April to October, 10 am - 8 pm (last entry at 7 pm). November to March, 10 am - 6:30 pm (last entry at 5:30 pm).

🚗 Sintra | [biester.pt](http://biester.pt)

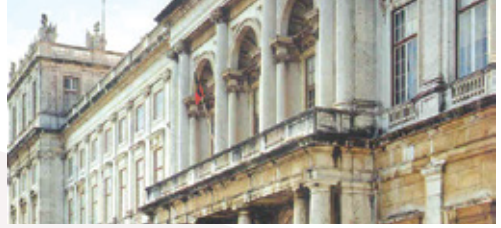


### FRONTEIRA PALACE

One of the most beautiful 17<sup>th</sup> century Lisbon monuments that, although functioning as a museum, is inhabited by the descendants of Dom João de Mascarenhas, the 1st Marquis de Fronteira. This is one of the charms of this space that contains the largest collection of tiles in their place of origin.

Largo São Domingos Benfica, 1, Lisboa | T. (+351) 217 784 599  
Palace: June-September, Monday to Saturday, 10.30am; 11am; 11.30am; 12am. October-May, Monday-Saturday, 11am; 12am. Gardens (last admittance half an hour before the end of the visits): June-September, Monday to Friday, 10.30am-1pm, 2pm-5pm; Saturday, 10.30am-1pm. October-May, Monday to Friday, 11am-1pm, 2pm-5pm; Saturday, 11am-1pm.

[www.fronreira-alorna.pt](http://www.fronreira-alorna.pt)



### AJUDA NATIONAL PALACE LISBOA CARD PARTNER

Neoclassical building built in 1796, was official residence of the royal family until 1910. Nineteenth century environments and important collections of decorative arts of the eighteen and nineteen centuries.

Largo da Ajuda, Lisboa | T. (+351) 213 620 264  
10am-5pm (last entry at 4.30pm). Closed: Wednesday, January 1, Easter Sunday, May 1, June 13 and December 25 Free on 1<sup>st</sup> Sunday of the month (all day).

🚗 714, 732, 742, 760 🚏 18 | [www.palacioajuda.pt](http://www.palacioajuda.pt)



### MAFRA NATIONAL PALACE LISBOA CARD PARTNER

Majestic eighteen century palace. Its precious library and collection of Italian sculptures, set of bells and six organs are unique in the world.

Terreiro D. João V, Mafra | T. (+351) 261 817 550  
Palace, 9am-5pm (last entry at 4.15pm). Center for Sacred Art and Conventual Center closed from 1pm to 2pm. Library (Readers), Monday to Friday, 9.30am-1pm and 2pm-4pm. Basílica, every day, 9.30am-1pm and 2pm-5.30pm. Closed: Tuesday, January 1, Easter Sunday, May 1, Thursday of Ascension (Municipal Day) and December 25.

[www.palaciomafra.pt](http://www.palaciomafra.pt)



### PENA NATIONAL PALACE LISBOA CARD PARTNER

A romantic palace with exuberant architecture, art collection and testimonies of royalty.

Everyday, 10am-6pm.

🚗 Sintra (Sintra line)

[www.parquesdesintra.pt](http://www.parquesdesintra.pt)





**QUELUZ NATIONAL PALACE**

**LISBOA CARD PARTNER**

**A charming 18<sup>th</sup> century palace with spacious gardens studded with statuary.**

Largo do Palácio, Queluz | T. (+351) 214 343 860

Everyday, 10am-6pm.

🚗 Queluz (Sintra line)

[www.parquesdesintra.pt](http://www.parquesdesintra.pt)



**LISBOA CATHEDRAL**

**LISBOA CARD PARTNER**

**Built in the 12<sup>th</sup> century by the first King of Portugal, D. Afonso Henriques**

Largo da Sé, Lisboa | T. (+351) 218 866 752

[info@sedelisboa.pt](mailto:info@sedelisboa.pt)

[www.sedelisboa.pt](http://www.sedelisboa.pt)



**SINTRA NATIONAL PALACE**

**LISBOA CARD PARTNER**

**A former royal palace with a captivating mixture of Mudejar, Manueline and Renaissance architecture.**

Largo Rainha D. Amélia, Sintra | T. (+351) 219 106 840

Everyday, 9.30am-6pm.

🚗 Sintra (Sintra line)

[www.parquesdesintra.pt](http://www.parquesdesintra.pt)



**TOWER OF THE CHURCH OF ST GEORGE'S CASTLE**

**LISBOA CARD PARTNER**

**Old Mosque transformed into a Church.**

**Here, D. Afonso Henriques entered in procession and royal procession, after the conquest of the city of Lisboa.**

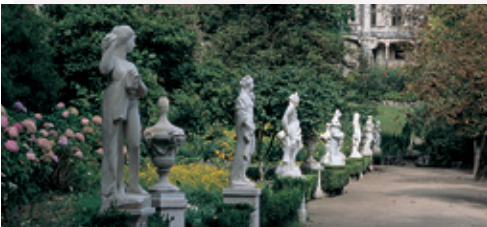
Largo de Santa Cruz do Castelo, 15, Lisboa |

T. (+351) 215 806 032

🚗 737 🚗 12, 28

[geral@torredaigrejadocastelo.pt](mailto:geral@torredaigrejadocastelo.pt)

[www.torredaigrejadocastelo.pt](http://www.torredaigrejadocastelo.pt)



**QUINTA DA REGALEIRA**

**LISBOA CARD PARTNER**

**A palace with exotically mysterious associations.**

Quinta da Regaleira, Sintra | T. (+351) 219 106 650

Visits by appointment reservations recommended. Daily visits, 10am-8pm. Closed: January 1 and December 24, 25 and 26.

[www.regaleira.pt](http://www.regaleira.pt)



**BELÉM TOWER**

**LISBOA CARD PARTNER**

**Lisboa's ex libris. Masterpiece of military architecture in the Manueline style by 16<sup>th</sup> cent. architect Francisco Arruda.**

**A UNESCO World Heritage building.**

Av. Brasília, Lisboa | T. (+351) 213 620 034/38

October to April, 10am-5.30pm (last entry at 5pm). May to September, 10am-6.30pm (last entry at 5pm). Closed: Monday, January 1, Easter Sunday, May 1, June 13 and December 25.

🚗 727, 728, 729, 751 🚗 15 Belém (Cascais line)

[www.torrebelem.pt](http://www.torrebelem.pt)

## OTHER MONUMENTS

### ESTRELA BASILICA

**One of Lisbon's most impressive churches. The dome is a city landmark. 18<sup>th</sup> cent.**

Largo da Estrela, Lisboa

### CONVENT OF CHRIST

#### LISBOA CARD PARTNER

Colina do Castelo, Tomar | T. (+351) 249 313 481

October to May, 9am-5.30pm (last entry at 5pm). June to September, 9am-6.30pm (last entry at 6pm). Closed: January 1, March 1, Sunday Easter, May 1 and December 25.

[www.conventocristo.pt](http://www.conventocristo.pt)

### SÃO VICENTE DE FORA

#### CHURCH AND MONASTERY

**Established in 1147 to render thanks for the conquest of Lisboa from the Moors.**

Largo de São Vicente, Lisboa

### ALCOBAÇA MONASTERY

#### LISBOA CARD PARTNER

Praça 25 de Abril, Alcobaca | T. (+351) 262 505 120

October to March, 9am-5pm (last entry at 4.30pm). April to September, 9am-7pm (last entry at 6.30pm). Closed: January 1, Sunday Easter, May 1, August 20 and December 25.

[www.mosteiroalcobaca.pt](http://www.mosteiroalcobaca.pt)

### BATALHA MONASTERY

#### LISBOA CARD PARTNER

Largo Infante D. Henrique, Batalha | T. (+351) 244 765 497

October to March, 9am-5.30pm (last entry at 5pm). April to September, 9am-6.30pm (last entry at 6pm). Closed: January 1, Sunday Easter, May 1, August 14 and December 25.

[www.mosteirobatalha.pt](http://www.mosteirobatalha.pt)

### NATIONAL PANTHEON

#### LISBOA CARD PARTNER

**Santa Engrácia Church, Lisbon's largest baroque structure.**

Campo de Santa Clara, Lisboa

Closed on public holidays (June 13)



### INTERPRETATION CENTER

#### OF TORRES VEDRAS LINES

**Come and discover the largest defensive campaign system in Europe – built between 1809 and 1810 to protect Lisbon from the 3<sup>rd</sup> French Invasion of Portugal, one of the most striking episodes of the Napoleonic invasions.**

Praça Dr. Eugénio Dias, N.º 12, Sobral de Monte Agraço

T. (+351) 261 942 296

Tuesday to Sunday from 10 am to 6 pm.

[cilt@cm-sobral.pt](mailto:cilt@cm-sobral.pt)

[www.cilt.pt](http://www.cilt.pt) and [www.rhlt.pt](http://www.rhlt.pt)



### SINTRA BUDDHIST TEMPLE

**One of four traditional temples of Kadampa Buddhism in the world. Open for free visits and talks, meditation classes and retreats. It has a shop, cafe, garden and rooms for rent.**

Rua Moinho do Gato, 5, Várzea de Sintra

T. (+351) 960 007 110

Tuesday to Sunday, 10am-7pm.

[www.kadampa.pt](http://www.kadampa.pt)



### FERNANDO PESSOA HOUSE

**The house in which Fernando Pessoa spent the last 15 years of his life.**

Rua Coelho da Rocha, 16-18, Lisboa | T. (+351) 213 913 270

Tuesday to Sunday, 10am to 6pm. Closed on Mondays.

🚗 709, 713, 720, 738, 774 🚏 25 e 28 🗺️ Rato

📧 info@casafernandopessoa.pt

🌐 www.casafernandopessoa.pt



### MEDEIROS E ALMEIDA MUSEUM

**LISBOA CARD PARTNER**

**An unmissable collection of decorative arts: furniture, Chinese porcelain, clocks and watches, painting and sculpture.**

Rua Rosa Araújo, 41, Lisboa | T. (+351) 213 547 892

Monday to Saturday, 10am – 5pm. Closed: Sunday.

📧 info@museumedeirosealmeida.pt

🌐 museumedeirosealmeida.pt



### AMÁLIA RODRIGUES MUSEUM-RESIDENCE

**LISBOA CARD PARTNER**

**The house where Fado's greatest icon lived for over half a century.**

Rua de São Bento, 193, Lisboa | T. (+351) 213 971 896

Tuesday to Sunday, 10am-6pm.

🚗 706, 727

🌐 www.amaliarodrigues.pt



### MACAU CULTURAL AND SCIENTIFIC CENTRE

**LISBOA CARD PARTNER**

**Books, multimedia and iconography on Chinese society.**

Rua da Junqueira, 30, Lisboa | T. (+351) 213 617 570

Tuesday to Saturday, 10am-5pm

Sunday, 12pm-6pm.

🚗 714, 727, 732, 751, 756 🚏 15

📧 geral@cccsm.pt

🌐 www.cccm.mctes.pt



### DR. ANASTÁCIO GONÇALVES

### MUSEUM-RESIDENCE

**LISBOA CARD PARTNER**

**Paintings, ceramics, furniture and porcelain.**

Av. 5 de Outubro, 6-8, Lisboa | T. (+351) 210 109 923

Tuesday to Sunday, 10am-6pm.

🚗 701, 720, 727, 732, 736, 738, 744, 783

🗺️ Picoas, Saldanha

🌐 www.cmuseuanastaciogoncalves.pt



### BELÉM CULTURAL CENTRE

**LISBOA CARD PARTNER**

**One of the biggest cultural centres in Europe.**

Praça do Império, Lisboa | T. (+351) 213 612 400

Exhibition Centre, 10am-7pm (last entry at 6.15pm).

Closed on Monday.

🌐 www.ccb.pt

## MUSEUMS



### CULTURGEST

#### - CAIXA GERAL DE DEPÓSITOS FOUNDATION

##### LISBOA CARD PARTNER

**Exhibitions, dance, theatre, music, cinema, conferences.**

Rua Arco do Cego, Lisboa | T. (+351) 217 905 454

Tuesday to Friday, 11am-6pm (last entry at 5.30pm). Saturdays, Sundays and holidays, 11am-7pm (last entry at 6.30pm). Closed on Monday. Audio guides available for free. School visits and groups.

🚶 207, 722, 735, 736, 742, 744, 749, 754, 756, 783, 727, 732, 738, 767

📍 Campo Pequeno

[www.culturgest.pt](http://www.culturgest.pt)

### CORDOARIA

Rua da Junqueira, Lisboa

T. (+351) 210 977 376

[ccm.marinha.pt](mailto:ccm.marinha.pt)



### FRAGATA D. FERNANDO II E GLÓRIA

##### LISBOA CARD PARTNER

**Get on board and take a journey through the history of the last ship of the Portuguese Navy to sail exclusively by sail and the last ship of the "Carreira da Índia".**

Largo Alfredo Dinis, Almada | T. (+351) 212 746 295

From May 1<sup>st</sup> to September 30<sup>th</sup>, from Tuesday to Sunday, from 10 am to 6 pm; from 1<sup>st</sup> October to April 30<sup>th</sup>, from Tuesday to Sunday, from 10 am to 5 pm. Closed on Mondays, January 1<sup>st</sup>, Easter Sunday, May 1<sup>st</sup> and December 25<sup>th</sup>.

[fernandogloria@marinha.pt](mailto:fernandogloria@marinha.pt)

[ccm.marinha.pt/pt/dfernando](http://ccm.marinha.pt/pt/dfernando)



### JOSÉ SARAMAGO FOUNDATION

##### LISBOA CARD PARTNER

**Casa dos Bicos is the home of José Saramago Foundation.**

**Public conferences, concerts, debates, and a permanente exhibition about the life and the work of the 1998's Nobel Prize of Literature.**

Casa dos Bicos, Rua dos Bacalhoeiros, 10, Lisboa

T. (+351) 218 802 040

Monday to Saturday, 10am-6pm.

[www.josesaramago.org](http://www.josesaramago.org)



### ARPAD SZENES-VIEIRA DA SILVA

##### FOUNDATION

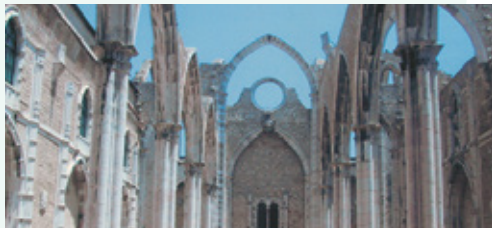
##### LISBOA CARD PARTNER

**The Foundation has the purpose to disseminate and to study of the work of the couple Arpad Szenes and Maria Helena Vieira da Silva, as well as other artists, intellectuals and friends, domestic or foreign and contemporary to them.**

Praça das Amoreiras, 56, Lisboa | T. (+351) 213 880 044

Tuesday to Sunday, 10am-6pm. Closed: Monday and holidays.

[www.fasvs.pt](http://www.fasvs.pt)



### CARMO ARCHAEOLOGICAL MUSEUM

##### LISBOA CARD PARTNER

**The city's history from the pre-historical period to the present day.**

Largo do Carmo, Lisboa | T. (+351) 213 478 629

June to September, 10am-7pm. October to May, 10am to 6 pm.

Closed on Sunday.

🚶 758 🚗 28 📍 Baixa/Chiado.

[www.museuarqueologicodocarmo.pt](http://www.museuarqueologicodocarmo.pt)



**RICARDO ESPÍRITO SANTO SILVA  
FOUNDATION - PORTUGUESE DECORATIVE  
ARTS MUSEUM**  
**LISBOA CARD PARTNER**

**Furniture, fabrics, porcelain and painting. Guided tours, extensive to Arts, Handicrafts and Restoration workshops.**  
Largo das Portas do Sol, 2, Lisboa | T. (+351) 218 814 600 / (+351) 218 881 991  
Every day, 10am-5pm. Mondays and Wednesdays, 11am-3pm, Thursdays, 3pm (other days, by appointment only).  
Closed: Tuesday, January 1, May 1 and December 25  
Coffee shop: Monday to Friday. 10am-5pm.  
🚶 737 🚶 12, 28  
[www.fress.pt](http://www.fress.pt)



**MONEY MUSEUM**

**The Money Museum, located in the heart of Lisboa's historic centre, offers its visitors the opportunity to discover rare examples of banknotes and coins from all over the world, in an innovative, interactive experience. Visitors are also invited to go to the crypt of the old church and discover the only section accessible to the public of the D. Dinis Wall, classified as a National Monument.**  
Banco de Portugal, Largo de São Julião, Lisboa  
T. (+351) 213 213 240  
Wednesday to Sunday, 10am-6pm. Closes on 1<sup>st</sup> January, 1<sup>st</sup> May, 24th and 25th December.  
[info@museudodineiro.pt](mailto:info@museudodineiro.pt)  
[museudodineiro.pt](http://museudodineiro.pt)



**BENFICA COSME DAMIÃO MUSEUM**  
**LISBOA CARD PARTNER**

**The trophies, the facts and the people who made Benfica a landmark of world sport.**  
Estádio do Sport Lisboa e Benfica, Av. Eusébio da Silva Ferreira, Lisboa | T. (+351) 217 219 590  
Every day, 10am-6pm (on match days the museum closes at the beginning of the game).  
🚶 3, 64, 729, 750, 765, 767, 799  
📍 Colégio Militar / Alto dos Moinhos  
[www.museubenfica.pt](http://www.museubenfica.pt)



**LISBOA MUSEUM - PIMENTA PALACE**

**Archaeological finds, paintings, engravings, documenting the history of Lisboa.**  
Campo Grande, 245, Lisboa | T. (+351) 217 513 200  
10am-6pm. Closed on Monday.  
🚶 701, 736, 747, 750 📍 Campo Grande  
[www.museudelisboa.pt](http://www.museudelisboa.pt)



**LISBOA MUSEUM - ST. ANTHONY**

**Iconography, books, vestments and religious objects.**  
Largo de Santo António da Sé, 22, Lisboa  
T. (+351) 218 860 447  
10am-6pm. Closed on Monday.  
🚶 737 🚶 12, 28  
[www.museudelisboa.pt](http://www.museudelisboa.pt)

## MUSEUMS



### CHIADO MUSEUM

#### LISBOA CARD PARTNER

**National Museum of Contemporary Art (post 1850 works).**

Rua Serpa Pinto, 4, Lisboa | T. (+351) 213 432 148

Tuesday to Sunday, 10am-6pm. Closed: Monday, January 1, Easter Sunday, May 1, June 13 and December 25.

🚗 758 🚏 28 📍 Baixa-Chiado

[www.museuartecontemporanea.pt](http://www.museuartecontemporanea.pt)



### WATER MUSEUM

#### LISBOA CARD PARTNER

**This pumping station was in service between 1880 and 1928.**

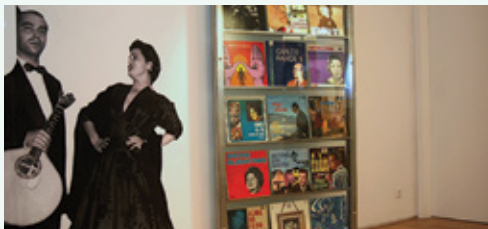
**Hosts the permanent exhibition of the museum about history, science, technology and sustainability.**

Rua do Alviela, 12, Lisboa | T. (+351) 218 100 215

Tuesday to Saturday, 10am-5.30pm. Closes for lunch from 12.30pm to 1.30pm. Closed on national holidays.

🚗 735, 794, 706, 712, 782 🚏 Sta. Apolónia 📍 Santa Apolónia

[www.epal.pt](http://www.epal.pt)



### FADO MUSEUM

#### LISBOA CARD PARTNER

**Everything about Fado and the Portuguese guitar.**

Largo do Chafariz de Dentro, Lisboa | T. (+351) 218 823 470

10am-6pm (last entry at 5.30pm). Closed: Monday, January 1, May 1 and December 25.

🚗 208, 728, 735, 759, 794

[www.museudofado.pt](http://www.museudofado.pt)



### PHARMACY MUSEUM

#### LISBOA CARD PARTNER

**Pharmacy objects from several civilizations.**

Rua Marechal Saldanha, 1, Lisboa | T. (+351) 213 400 680

Monday to Friday, 10am to 6 pm (last entry 5:30pm) Weekends, 10am to 1pm, and 2pm to 6pm.

Closed: Easter Sunday, December 25<sup>th</sup> and January 1<sup>st</sup>.

🚗 758 (Praça Luís de Camões) 🚏 28 📍 Chiado

[museudafarmacia@anf.pt](mailto:museudafarmacia@anf.pt)

[www.museudafarmacia.pt](http://www.museudafarmacia.pt)



### FUTURE MUSEUM

#### OF CONTEMPORARY ART - MAC/CCB

#### LISBOA CARD PARTNER

**The public can enjoy the great names of modern and contemporary art, such as Pablo Picasso, Salvador Dalí, Andy Warhol, Francis Bacon, among many others.**

Centro Cultural de Belém, Praça do Império, Lisboa

T. (+351) 213 612 878

Prices: children (0 to 6 years old) – free entry; children (7 to 18 years old), over 65 years old, visitors with reduced mobility and students – 2,50€; adults – 5€. Saturdays – free entry  
Tuesday to Sunday, 10pm-7pm (last entry at 18:30pm).

[www.museuberardo.pt](http://www.museuberardo.pt)



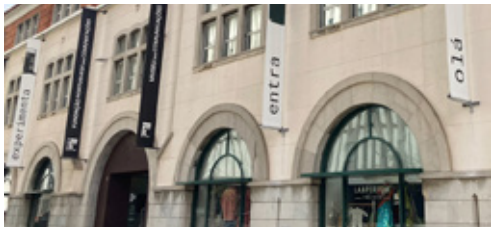
### RAFAEL BORDALO PINHEIRO MUSEUM

Campo Grande, 382, Lisboa | T. (+351) 215 818 540

Tuesday to Sunday, 10am-6pm. Closed: Monday, January 1, May 1, December 25.

🚗 701, 703, 736, 747, 750, 768 📍 Campo Grande

[www.museubordalopinheiro.pt](http://www.museubordalopinheiro.pt)



## COMMUNICATIONS MUSEUM

### LISBOA CARD PARTNER

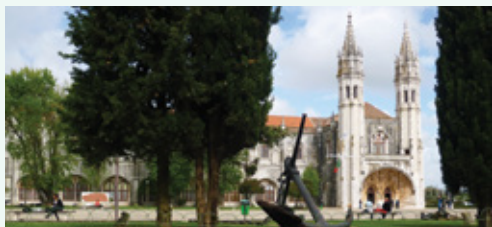
**Documents, objects and equipment that bear witness to the evolution of communication.**

Rua do Instituto Industrial, 16, Lisboa | T. (+351) 213 935 000 / 159  
Monday to Friday, 10am-6pm. Saturdays, 2pm-6pm. Last Thursday of the month, 10am-10pm, with free entry between 6pm-10pm. Closed on public holidays.

🚏 706, 714, 728, 732, 760 🚏 15, 18 e 25

🚏 Cais do Sodré (Cascais line) 🚏 Cais do Sodré

[www.fpc.pt](http://www.fpc.pt)



## NAVAL MUSEUM

### LISBOA CARD PARTNER

**Among boat models, maritime instruments, impressive replicas and real boats, learn about the History of the Portuguese at Sea.**

Praça do Império – Belém, Lisboa | T. (+351) 210 977 371  
October to October to April, everyday, 10am- 5pm. May to September, everyday, 10am-6pm.

Closed: January 1, Easter Sunday, May 1 and December 25.

🚏 714, 727, 28, 729, 751, 201 🚏 15 🚏 Belém (Cascais line)

🚏 Estação Fluvial de Belém (Transtejo)

[ccm.marinha.pt/pt/museu](http://ccm.marinha.pt/pt/museu)



## ART, ARCHITECTURE AND TECHNOLOGY MUSEUM

### LISBOA CARD PARTNER

**New museum of the EDP Foundation that presents the relationship between art, architecture and technologies, through contemporary and international programming.**

Av. Brasília, Central Tejo, Lisboa | T. (+351) 210 028 130

12am-8pm. Closed: Tuesday, January 1, May 1 and December 25.

🚏 728, 714, 727, 729, 751 🚏 15 🚏 Belém (Cascais line)

[www.maat.pt](http://www.maat.pt)



## WAR VETERANS MUSEUM

### - BOM SUCESSO FORT

**It integrates the Monument to the Combatants of the Overseas war. Museum and exhibitions.**

Forte do Bom Sucesso, Belém | T. (+351) 969 562 064

Daily, 10am-5.30pm (last entry at 5pm). April to September, 10am-6pm (last entry at 5.30pm).

🚏 727, 728, 729, 751 🚏 15 🚏 Belém (Cascais line)

[www.ligacombatentes.org.pt](http://www.ligacombatentes.org.pt)



## PUPPET MUSEUM

**A collection of puppets from around the world.**

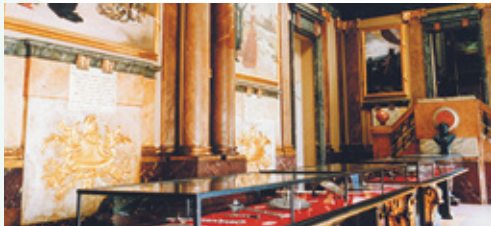
**Demonstrations of the techniques of puppet manipulation.**

Rua da Esperança, 146, Lisboa | T. (+351) 213 942 810

Tuesday to Sunday, 10am-1pm and 2pm-6pm. Closed: Monday, January 1, May 1 and December 25.

[www.museudamarioneta.pt](http://www.museudamarioneta.pt)

## MUSEUMS



### LISBON MILITARY MUSEUM

**Valuable collection of artillery and uniforms.**

Largo do Museu de Artilharia, Lisboa | T. (+351) 218 842 569  
Tuesday to Sunday, 10am-5pm. Weekend, 10pm-12.30am and  
1pm-5pm. Free entry, on the first Sunday morning of each month.

📞 210, 728, 735

[www.exercito.pt](http://www.exercito.pt)



### NATIONAL MUSEUM OF ANCIENT ART

**LISBOA CARD PARTNER**

**European art including the finest collection of Portuguese art from the Middle Ages to the 19th century. African and Oriental art.**

Rua Janelas Verdes, Lisboa | T. (+351) 213 912 800  
Tuesday to Sunday, 10am-6pm. Closed: January 1, Easter  
Sunday, May 1, June 13, December 24 and 25.

📞 713,714, 727, 728, 732, 760 📠 15, 18, 25

[www.museudearteantiga.pt](http://www.museudearteantiga.pt)



### NATIONAL COACH MUSEUM

**LISBOA CARD PARTNER**

**On May 23, 1905 the "Royal Coach Museum" open in Lisbon and it is the world's first coach museum that occupied the antique Royal Riding School, specifically adapted to receive a unique collection of coaches! On May 23, 2015 the collection moved to a brand new building.**

Avenida da Índia, 136, Lisboa | Picadeiro Real: Praça Afonso de Albuquerque, Lisboa | T. (+351) 210 732 319

Tuesday to Sunday, 10am-6pm (Last visit 5.15pm (New Building) y 5.30pm (Royal Riding School). Closed: Monday, January 1, May 1, Easter Sunday, December 24 and 25. Free on the first Sunday of each month.

[www.museudoscoches.pt](http://www.museudoscoches.pt)



### NATIONAL TILE MUSEUM

**LISBOA CARD PARTNER**

**The art of the tile over the past five centuries housed in a sixteenth century convent.**

Rua Madre de Deus, 4, Lisboa | T. (+351) 218 100 340

Tuesday to Sunday, 10am-6pm. Closed: Monday, Easter Sunday, January 1, May 1, June 13 and December 25.

📞 718, 728, 742, 759, 794

[www.museudoazulejo.pt](http://www.museudoazulejo.pt)



### NATIONAL MUSIC MUSEUM

**LISBOA CARD PARTNER**

**European musical instruments from the past three centuries.**

**A collection housed in a Metro station concourse.**

Rua João Freitas Branco, Lisboa | T. (+351) 217 710 990

Tuesday to Saturday, 10am-6pm. Closed: Sunday, Monday, January 1, May 1, June 13 and December 25.

📍 Alto dos Moinhos

[www.museunacionaldamusica.pt](http://www.museunacionaldamusica.pt)



### NATIONAL MUSEUM OF ETHNOLOGY

**LISBOA CARD PARTNER**

**Collection with a universal range. Agricultural implements.**

Av. Ilha da Madeira, Lisboa | T. (+351) 213 041 160

Tuesdays, 2pm-6pm. Wednesday to Sunday, 10am-6pm  
Closed: Monday, January 1, May 1, June 13 and December 25.

📞 728, 732 📍 Belém, (Cascais line)

[www.mnetnologia.wordpress.com](http://www.mnetnologia.wordpress.com)





### NATIONAL RAILWAY MUSEUM

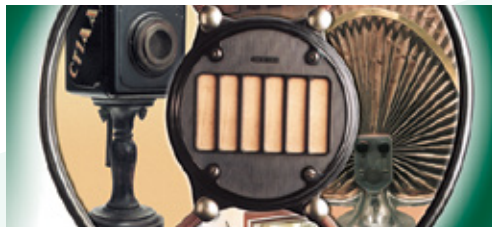
Travel from the beginnings of steam locomotives to the railroad of the future, not forgetting national treasures like the Royal Train or the Portuguese Presidential Train.

Rua Eng. Ferreira de Mesquita, 1A Entroncamento

T. (+351) 249 130 382

Tuesday to Sunday, 10am-6pm.

[www.fmnf.pt](http://www.fmnf.pt)



### RTP - VISIBLE RADIO AND TELEVISION MUSEUM COLLECTION

The largest European collection of radio equipment.

Rua Conselheiro Emídio Navarro, 34, Lisbon

T. (+351) 217 947 923 | 217 947 961

Monday to Friday, 10 am to 1 pm and 2 pm to 5 pm. Open on the first Saturday of each month for groups of more than 15 people, subject to availability and prior booking, at least one week in advance, except holidays. Closed on Saturdays, Sundays and holidays. Free visits. Prior registration required for groups.

[museu.virtual@rtp.pt](mailto:museu.virtual@rtp.pt)

[museu.rtp.pt](http://museu.rtp.pt)



### SÃO ROQUE MUSEUM

LISBOA CARD PARTNER

Paintings, sculpture, jewelry, illuminated manuscripts, fabrics, reliquaries and altar frontals (14<sup>th</sup> century to 20<sup>th</sup> century).

Largo Trindade Coelho, Lisboa | T. (+351) 213 235 444/ 382/ 449

Tuesday to Sunday, 10am-6pm. Monday, 2pm-6pm

Closed: Monday morning and holidays.

[mais.scml.pt/museu-saoroque/museu/](http://mais.scml.pt/museu-saoroque/museu/)



### THE ORIENT MUSEUM

LISBOA CARD PARTNER

Av. Brasília, Doca de Alcântara Norte, Lisboa

I T. (+351) 213 585 200

Tuesday to Sunday, 10am-6pm. Friday, 10am-10pm (free entry, 6pm-10pm). Closed on Monday.

[www.museudooriente.pt](http://www.museudooriente.pt)



### NATIONAL THEATRE AND DANCE MUSEUM

LISBOA CARD PARTNER

Costumes, costume designs, stage sets, photographs and so much more.

Estrada do Lumiar, 10-12, Lisboa | T. (+351) 217 567 410

Tuesday to Sunday, 10am-6pm. Closed: Monday and Public holidays (June 13).

📞 736, 703, 701, 796 📍 Lumiar

[www.museudoteatroedanca.gov.pt](http://www.museudoteatroedanca.gov.pt)



### MUSEUM SPORTING CP - STADIUM JOSÉ DE ALVALADE

LISBOA CARD PARTNER

Come and see the history of one of the biggest and most eclectic clubs in the world of sports.

Rua Professor Fernando da Fonseca, Lisboa

T. (+351) 217 516 164

Tuesday to Sunday, 10:30 am-1 pm and 2:30pm-6pm.

📍 Campo Grande | [www.sporting.pt](http://www.sporting.pt)

## MUSEUMS



### NATIONAL DRESS MUSEUM

LISBOA CARD PARTNER

Costumes and accessories from the 17<sup>th</sup> century to the present day and a Botanical Park.

Largo Júlio Castilho, Lisboa | T. (+351) 217 567 620

Tuesday to Sunday, 10am-6pm. Closed: Monday.

🚗 701, 703, 736 🚏 Lumiar

[www.museudo traje.dgcp.gov.pt](http://www.museudo traje.dgcp.gov.pt)



### NEWSMUSEUM | MEDIA AGE EXPERIENCE

LISBOA CARD PARTNER

Nominated for European Museum of the Year 2017.

An intelligent, interactive and technically advanced entertainment, dedicated to the stories of Portugal and the world as told by the Media. That is how NewsMuseum, located in the Village of Sintra, defines itself.

Rua Visconde Monserrate, 26 a 38, Sintra | T. (+351) 210 126 600

Every day from 10am-6.30pm. Last entry at 5.30pm.

🚗 Sintra (sintra Line)

[www.newsmuseum.pt](http://www.newsmuseum.pt)

## OTHER MUSEUMS



### CARRIS MUSEUM

LISBOA CARD PARTNER

Trams, buses and urban public transport equipment.

Rua 1º de Maio, 103, Lisboa



### AIR MUSEUM

LISBOA CARD PARTNER

Planes and equipment displayed in a hangar.

Granja do Marquês, Pêro Pinheiro, Sintra



### SCIENCE AND NATURAL

### HISTORY NATIONAL MUSEUM

LISBOA CARD PARTNER

Scientific instruments, collection of natural history.

Rua Escola Politécnica, 54-60, Lisboa



### ROCA LISBOA GALLERY

We invite you to visit the Roca Lisboa Gallery and discover the latest innovations in bathroom spaces, as well as the sensations that surround them. A space open to the city, with events and cultural activities.

Praça dos Restauradores, 46, Lisboa | T. (+351) 213 404 260  
Monday to Friday, 10:30 am to 17:30 pm.  
[rocalisboagallery.com](http://rocalisboagallery.com)



### VASCO DA GAMA AQUARIUM

#### LISBOA CARD PARTNER

Visit one of the oldest museum-aquariums in the world and travel between the depths of the sea and the maritime slopes, contemplating Portuguese aquatic life.

Rua Direita do Dafundo, Cruz Quebrada – Dafundo  
T. (+351) 214 205 000

Everyday, 10am-18pm (last entry at 5:30pm).

🚗 76,723,729,750,751 (Carris); 1,6 (Vimeca) 🚏 15

[aquariovgama@marinha.pt](mailto:aquariovgama@marinha.pt)  
[marinha.pt/pt/aquariovgama](http://marinha.pt/pt/aquariovgama)

### FOOTBALL STADIUMS



### TOUR ON THE STADIUM

#### JOSÉ ALVALADE SPORTING CP

#### LISBOA CARD PARTNER

Come and see the stadium of one of the biggest and most eclectic clubs in the world of sports.

Rua Professor Fernando da Fonseca, Lisboa  
T. (+351) 217 516 164

Tuesday to Sunday, 11.30am, 2.30pm, 3.30pm; 4.30pm.

📍 Campo Grande

[www.sporting.pt](http://www.sporting.pt)



### CASINO ESTORIL

The largest casino in Europe. Gaming rooms, open all day from 3pm to 3am, shows from 9pm.

Praça José Teodoro dos Santos, Estoril | T. (+351) 214 667 700  
Estoril 🚏 (Cascais line)  
[www.casino-estoril.pt](http://www.casino-estoril.pt)



### TOUR ON THE LUZ STADIUM

#### LISBOA CARD PARTNER

Visit the Estádio do Sport Lisboa e Benfica and experience the stadium on the day of play.

Av. Eusébio da Silva Ferreira, Lisboa | T. (+351) 217 219 500  
Every day, 10am-7pm.

🚗 3, 64, 729, 750, 765, 767, 799

📍 Colégio Militar/Alto dos Moinhos

[www.slbenfica.pt](http://www.slbenfica.pt)

[visitasestadio@slbenfica.pt](mailto:visitasestadio@slbenfica.pt)



### CASINO LISBOA

Gaming rooms and shows from 3pm to 3am.

Alameda dos Oceanos, Lt. 1.03.01

Parque das Nações, Lisboa | T. (+351) 218 929 000

3pm-3am. Friday and Saturday, 4pm-4am.

📍 Oriente

[www.casinolisboa.pt](http://www.casinolisboa.pt)

## CULTURE AND LEISURE



### CENTRO INTERPRETATIVO DA HISTÓRIA DO BACALHAU

LISBOA CARD PARTNER

**One of the most epic Portuguese stories is told here – the discovery of Terra Nova and the adventure in the frozen seas in search for codfish.**

Torreão Nascente do Terreiro do Paço, Lisboa

T. (+351) 211 126 155

Every day, 10am-7pm (last entry 6pm).

[www.historiabalcahau.pt](http://www.historiabalcahau.pt)



### STATION SUL E SUESTE

**Live the experience of a river cruise aboard one of the many traditional boats. Embark and discover the Tejo and its banks.**

Terreiro do Paço

Every day from 9am to 8pm.

[centrotejo@lismarketing.pt](mailto:centrotejo@lismarketing.pt)



### BRIDGE EXPERIENCE

LISBOA CARD PARTNER

**An interactive and immersive experience that allows a unique discovery of the Ponte 25 de Abril.**

Avenida da Índia, Alcântara

Every day, 10am to 6pm. Last entry at 5pm.

Closed on December 25.

[www.visitlisboa.com](http://www.visitlisboa.com)



### CENTRO INTERATIVO

### MITOS E LENDAS DE SINTRA

LISBOA CARD PARTNER

**Discover the mysticism, secrets and romanticism of Sintra on a journey that reveals the town's history, music and literature, through multimedia technology and sensory experiences.**

Praça da República, 23, Sintra | T. (+351) 219 231 157

Every day from 10am to 6.30pm, last entry at 5.30pm.

🚶 Sintra (sintra Line)

[www.visitlisboa.com](http://www.visitlisboa.com)



### CHAPITÔ

Costa do Castelo, 7, Lisboa | T. (+351) 218 855 550

Tuesdays to Sundays, midnight-2am.

🚶 737 🚶 28 🚶 Rossio

[www.chapitolo.org](http://www.chapitolo.org)



### TEJO CENTER

**A journey of interpretation, appreciation and environmental awareness of the two banks of the Tejo.**

Terreiro do Paço | T. (+351) 211 163 426

Every day from 10am to 7pm.

[centrotejo@lismarketing.pt](mailto:centrotejo@lismarketing.pt)



### HOT CLUBE DE PORTUGAL

The Hot Clube is one of the oldest jazz clubs in Europe and considered one of the top 100 jazz clubs in the world.

Praça da Alegria, 48, Lisboa | T. (+351) 213 619 740

Tuesday to Saturday, 10pm - 2am.

[www.hcp.pt](http://www.hcp.pt)



### LISBON ESCAPE HUNT

Imagine a seemingly normal room. Now imagine you and your friends locked inside that room.

Rua dos Douradores, 16, Lisboa | T. (+351) 924 149 160

Every day, 11am-9pm.

[www.lisbon.escapehunt.com](http://www.lisbon.escapehunt.com)



### LISBOA STORY CENTRE

#### LISBOA CARD PARTNER

Interpretive centre dedicated to stories about the Portuguese capital city told through immersion experiences.

Terreiro do Paço, 78-81, Lisboa | T. (+351) 21 194 10 99

Every day from 10am to 7pm (last entry 6pm).

[www.lisboastorycentre.pt](http://www.lisboastorycentre.pt)



### MARVEL MISSION

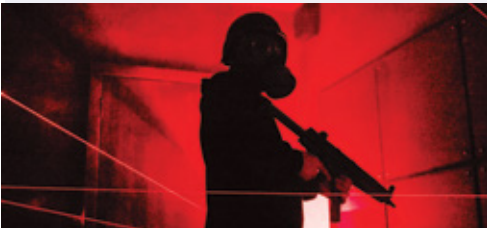
Welcome to the entertainment center based on the fantastic Marvel Universe. Here you can help superheroes through different missions and purchase collectible products and sculptures.

Av. Cruzeiro Seixas, 5 e 7, Amadora

T. (+351) 218 003 600

[info@marvelmission.com](mailto:info@marvelmission.com)

[www.marvelmission.com](http://www.marvelmission.com)



### ESCAPE GAME OVER LISBOA

There are three rooms for an interactive experience, with clues to follow and a truth to discover.

Rua de O Século, 4B, Lisboa | T. (+351) 926 871 858

From Monday to Friday, 3am - 12am. Saturdays and Sundays, 10:30am-12am.

[info@escapegameover.pt](mailto:info@escapegameover.pt)

[www.escapegameover.pt](http://www.escapegameover.pt)



### MINI GOLF LISBON

Join us on our 18 hole course that is lit with both natural and UV Neon light and is packed full of challenges, twists and turns, promising lots of fun for everyone. You can also get competitive on our pool tables, football and air hockey tables, or simply sit back and relax in our bar area.

Calçada Ferragial, 8, Lisboa | T. (+351) 926 674 272

Every day, 12:30 am to 11 pm (last entry: 10:30 pm).

Closed on 25<sup>th</sup> December and 1<sup>st</sup> January.

[golf@minigolflisbon.com](mailto:golf@minigolflisbon.com)

[minigolflisbon.com](http://minigolflisbon.com)

## CULTURE AND LEISURE



### LISBOA OCEANARIUM

#### LISBOA CARD PARTNER

**One of the biggest aquariums in Europe. Open every day.**

Espanlada D. Carlos I, Lisboa | T. (+351) 218 917 000

Prices: Permanent + Temporary Exhibition / Permanent Exhibition - children (0 to 3 years old): 12€/10€; adults (13 to 64 years old): 18€/15€; over 65 years old: 10€/12€; families (2 adults and children under 12 years old): 47€/39€.

Every day, 10am-8pm (last entry at 7pm).

🚗 705, 725, 728, 744, 708, 750, 759, 782, 794

📍 Oriente

[www.oceanario.pt](http://www.oceanario.pt)



### NAVY PLANETARIUM

#### LISBOA CARD PARTNER

**Get closer to the sky and feel like an astronaut among the stars. Get to understand what's going on beyond what the eyes can see, in what is one of the largest planetariums in the world.**

Praça do Império – Belém, Lisboa | T. (+351) 210 977 350

From Tuesday to Sunday, 09:30-12pm | 1:30pm-4pm. Saturday from 1:30pm-4pm.

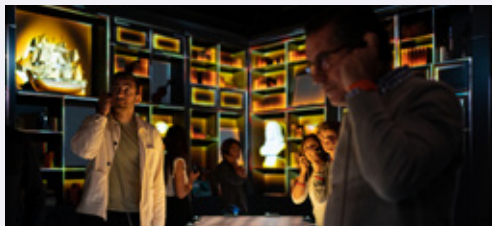
Closed: January 1, Easter Sunday, May 1 and December 25.

🚗 714, 727, 728, 729, 751, 201 🚏 15

📍 Belém (Cascais line) 🚶 Estação Fluvial de Belém (Transtejo)

[planetario@marinha.pt](mailto:planetario@marinha.pt)

[ccm.marinha.pt/pt/planetario](http://ccm.marinha.pt/pt/planetario)



### QUAKE

**A thematic experience that allows to see and feel the Great Lisbon Earthquake.**

Rua Cais da Alfândega Velha, 39, Lisboa

[general@lisbonquake.com](mailto:general@lisbonquake.com)

[info@lisbonquake.com](mailto:info@lisbonquake.com)



### D. MARIA II NATIONAL THEATER

Praça D. Pedro V, Lisboa | T. (+351) 213 250 800

[geral@tndm.pt](mailto:geral@tndm.pt)

[www.tndm.pt](http://www.tndm.pt)



### PAVILION OF KNOWLEDGE

#### LISBOA CARD PARTNER

José Mariano Gago, Parque das Nações, Lisboa | T. (+351) 218 917 100

Price: 9€; children (3-11 years): 6€; children (12-17 years):

7€; family: 24€.

Tuesday to Friday, 10am-6pm. Saturday, Sunday and Bank Holidays, 11am-7pm.

📍 Oriente

[www.pavconhecimento.pt](http://www.pavconhecimento.pt)



### NATIONAL THEATER OF SÃO CARLOS

Rua Serpa Pinto, 9, Lisboa | T. (+351) 213 253 800

[saocarlos.info@saocarlos.pt](mailto:saocarlos.info@saocarlos.pt)

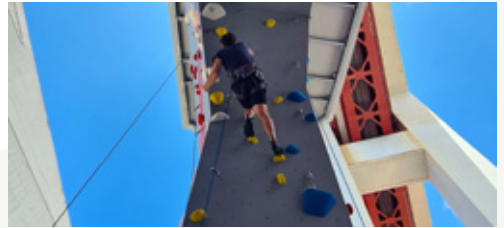


### ADVENTURE PARK

**Canopy is an activity that consists of sequentially passing through obstacles between platforms which are positioned on the tops of the trees always ending with a slide.**

Complexo Desportivo do Jamor, Estrada Carreira de Tiro | T. (+351) 211 519 400  
Every day, 10am-17pm.

Closed on December 25, January 1 and Easter Sunday.  
Reservations are not mandatory, but are recommended.  
[www.adventurepark.pt](http://www.adventurepark.pt)



### ESCALA25

**This incredible location provides a unique climbing experience where visitors can engage with the Capital's iconic Ponte 25 de abril bridge in a new and exciting way. A safe and welcoming space for all ages and abilities. Come climb with us!**

Av. da Índia, Pilar 7, Lisboa | T. (+351) 964 129 244  
Monday to Friday, 10 am to 8 pm.  
Weenkend, 10 am to 6 pm.

[escala25.com](http://escala25.com)



### BADOCA SAFARI PARK

**About 500 wild animals live in this theme park.**

Herdade da Badoca, Vila Nova de Santo André  
T. (+351) 369 708 850  
Every day, 9:30am-5:30am.

[badoca@badoca.com](mailto:badoca@badoca.com)  
[www.badoca.com](http://www.badoca.com)



### MARINA PARQUE DAS NAÇÕES

**Sailing, canoeing and windsurfing experiences as well as river cruises.**

Edf. da Capitania, Passeio de Neptuno, Lisboa  
T. (+351) 218 949 066  
Locks from 8.30am to 20.30pm.

[www.marinaparquedasnacoes.pt](http://www.marinaparquedasnacoes.pt)



### BIRD WATCHING AND VISITOR CENTRE

#### LISBOA CARD PARTNER

**More than 100 species of wild birds. Guided tours and birdwatching.**

Lezíria Sul de Vila Franca de Xira, Vila Franca de Xira  
T. (+351) 926 458 963  
Open every day, except Monday and July.

Vila Franca de Xira  
[www.evooa.pt](http://www.evooa.pt)



### MONTE SELVAGEM

**Preservation of the wild life on a montado (typical ecosystem of the Alentejo region). Home to both domestic and wild animals.**

Monte do Azinhal, Lavre, Montemor-o-Novo  
T. (+351) 265 894 377

Tuesdays to Sundays, 10am-7pm, until October.  
[www.monteselvagem.pt](http://www.monteselvagem.pt)

## OUTDOOR AND NATURAL PARKS



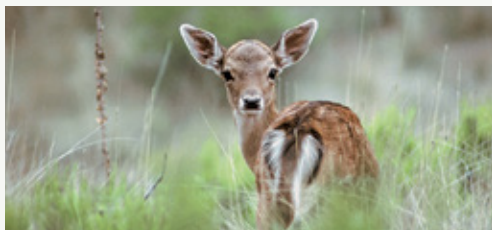
### COVA DA BALEIA ADVENTURE PARK

**Adventure Park with 55.000m<sup>2</sup>, 35 kilometers from Lisbon, in Mafra, dedicated to Adventure, Passion, Challenge and Emotion. Paintball, Canopy, Slide, Rappel, Pool, Inflatables.**

Senhora da Lapa, Barreiralva, Mafra | T. (+351) 969 008 368

Every day, 10am-7pm.

[www.covadabaleia.com](http://www.covadabaleia.com)



### MAFRA NATIONAL WILD LIFE PARK

**A former royal hunting reserve. 800 walled hectares. 35 kilometers from Lisboa, adjoining the Mafra Monastery, Portão do Codeçal.**

T. (+351) 261 817 050

Daily walks at 9.30am and 2pm.

[www.tapademaфра.com](http://www.tapademaфра.com)



### WIND – CENTRO DE ATIVIDADES DE MONTANHA

Rua Eduardo Mondlane, loja 44, Baixa da Banheira

T. (+351) 210 848 878

[geral@wind-cam.pt](mailto:geral@wind-cam.pt)

[www.wind-cam.pt](http://www.wind-cam.pt)



### LISBOA ZOO

#### LISBOA CARD PARTNER

**Dolphin Bay, Rainbow Park, Reptile House, Children's Farm and Birds and Reptiles Presentation.**

Estrada de Benfica, 158/160, Lisboa

T. (+351) 217 232 910 / 900

April to September, 10am-8pm. October to March, 10am-6pm.

🚗 716, 731, 754, 758, 701, 726, 755 e 768

📍 Jardim Zoológico 🚗 Sete-rios

[www.zoo.pt](http://www.zoo.pt)

## HEALTH & WELNESS



### ELOHIM SPA

**At ELOHIM SPA, you will have an unforgettable experience.**

**Elohim offers massages, reflexology, osteopathy, exfoliation and spiritual therapies.**

Largo do Rato, 3, 1.º, Lisboa | T. (+351) 213 860 708

[www.elohim.pt](http://www.elohim.pt)



### MALO CLINIC - FROM SCIENCE TO SMILE

**Innovation in dentistry.**

Av. dos Combatentes, 43A, 13.º, Lisboa

T. (+351) 217 228 100.

Monday to Friday, 8am-7pm.

[www.maloclinics.com](http://www.maloclinics.com)





### THALASSO CAPARICA TALASSOTHERAPY

**Therapies of seawater, osteopathy, massages, spine treatment and aesthetic.**

Av. 1.º de Maio, 25 A, Costa da Caparica | T. (+351) 212 905 655 / 916 189 585

Monday to Saturday (including holidays), 10am-8pm

Closed on Sunday

[www.thalassocaparica.com](http://www.thalassocaparica.com)



### PARQUE DAS NAÇÕES CABLE CAR

LISBOA CARD PARTNER

**Open from december 3<sup>rd</sup>. Opening times detailed on website.**

Tickets (one way singles): Adults - 6,50€

Children (<3 years) - Free entry

Children (4-12 years) - 4,50€

[www.telecabinelisboa.pt](http://www.telecabinelisboa.pt)



### EDUARDO VII PARK AND GREENHOUSE

LISBOA CARD PARTNER

**Spacious formal gardens, streams and paths.**

Parque Eduardo VII, Lisboa | T. (+351) 213 882 278

October to March, 9am-4.30pm. April to September, 9am-5.30pm.

🚶 702, 712, 720, 722, 731, 738, 744, 746, 749

📍 Marquês Pombal, Parque, S.Sebastião



### PANDA BINGO

Av. de Paris, 5 A, Lisboa | T. (+351) 218 486 521

Free Entry. Cards for €1, 2 and 3. 2575 places. Daily, 3pm-3am.

📍 Areiro



# Fado

INTANGIBLE HERITAGE OF HUMANITY



PATRIMÓNIO DA  
HUMANIDADE  
**FADO**  
HERITAGE OF  
HUMANITY

# The song of Lisboa and the World

Classified as Intangible Cultural Heritage of Humanity by UNESCO since November 2011, Fado is the purest expression of Lisboa's "soul". Much more than just a song, Fado is a musical manifestation of feeling Portuguese and a city's way of life, always accompanied by the solemn and melancholy chords of the Portuguese guitar.

Considered a brand inseparable from the culture and tradition of the Portuguese capital, Fado has been for at least two centuries, part of the city's heritage that endowed it with soul and voice. But since influences from overseas, and from various cultures

which arrived in Lisboa can also be heard in Fado, Lisboa's song is now deservedly a shared heritage with the world. Inspired from a simple and sentimental language, Fado's universal character surpasses all barriers and is now enjoyed by millions of fans worldwide. This internationalization of Fado is greatly due to the charisma and the voice of Amalia Rodrigues, the most renowned fado singer of all time, who from the 1950's took Lisboa's song to the most prestigious venues, from Russia to Japan. More recently, a new generation of singers of this genre has given the

song a new vitality, placing it in the circuits of World Music.

The ultimate international recognition of Fado comes with UNESCO's highest recognition, whose award of the Intangible Heritage of Humanity title makes this a perfect example of how a centuries-old tradition of a city becomes the identity symbol of a people. Therefore, whenever the lights are dimmed in a fado house and someone says "Silence, Fado is about to be sung", this is not just a ritual that is being performed. It is, as Amália Rodrigues would say, "a strange form of life" that is being renewed.





## Fado Houses

Here visitors can experience the whole atmosphere and rituals associated with Lisboa's song and listen to this language of emotions. Set in the historic districts of the city such as Alfama, Bairro Alto, Lapa and Alcântara, there are diverse establishments which host regular performances of fado, with resident artists.



### ADEGA MACHADO

The renovated Adegamachado, in Bairro Alto, keeps secrets in its songs. Fado and food à la carte in the main hall. Wine and snacks in the Fado hall (room -1).

Rua do Norte, 91, Lisboa | T. (+351) 213 422 282  
adegamachado@adegamachado.pt  
www.adegamachado.pt



### CAFÉ LUSO

Café Luso is one of the most prestigious fado houses in Portugal. Founded in 1927. Shows every night.

Travessa da Queimada, 10, Lisboa | T. (+351) 213 422 281  
www.cafeluso.pt

### CASA DE LINHARES

Beco dos Armazéns de Linho, 2, Lisboa | T. (+351) 910 188 118  
info@casadelinhares.com  
www.casadelinhares.pt

### ASSOCIAÇÃO DO FADO CASTO

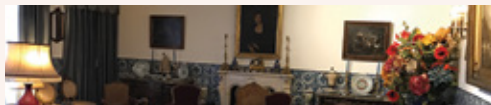
Rua de São Mamede, 8 A, Lisboa | T. (+351) 917 029 436  
mesadefrades@gmail.com  
www.likeandfollow.pt



### A SEVERA

Opened in 1955, the name of this fado house pays homage to "Maria Severa," a gypsy singer who, in the 19th century was the most famous Fado performer. Fado is sung here from Thursday to Tuesday, from 9.00pm.

Rua das Gáveas, 51-61, Lisboa | T. (+351) 213 428 314  
info@asevera.com  
www.asevera.com



### AMÁLIA RODRIGUES MUSEUM-RESIDENCE LISBOA CARD PARTNER

The house where Fado's greatest icon lived for over half a century.

Rua de São Bento, 193, Lisboa | T. (+351) 213 971 896  
Tuesday to Sunday, 10am-6pm  
☎ 706, 727  
secretariado@amaliarodrigues.pt  
www.amaliarodrigues.pt



### CLUBE DE FADO

**On entering Clube de Fado you will be able to listen to a prestigious cast of Fado singers accompanied by the Portuguese guitar, every night from 9.30pm.**

Rua S. João da Praça, 86-94, Lisboa | T. (+351) 218 852 704  
 clubedefado@fadoandfood.pt  
 www.clube-de-fado.com



### FADO EM SI

**Fado em Si restaurant, a double sense name meaning "fado essence" and "fado in yourself" it is not just another fado restaurant. With some the best professional fado singers we aim to make you feel the fado feelings. Opened every day from 7.30pm. Fado from 8.30pm.**

Rua São João da Praça, 18, Lisboa | T. (+351) 211 387 418  
 booking@fadoemsi.com  
 www.fadoemsi.com



### MARIA DA MOURARIA

**Where the sound of the Portuguese Guitar and voices can be heard every night. Open from Tuesday to Sunday, from 8pm to 2am. Fado from 8pm.**

Largo da Severa, 2, Lisboa | T. (+351) 218 860 165 / (+351) 964 766 056  
 mariadamouraria@gmail.com  
 www.mariadamouraria.pt

### MESA DE FRADES

Rua dos Remédios, 139, Lisboa | T. (+351) 917 029 436  
 mesadefrades@gmail.com  
 www.likeandfollow.pt



### FADO MUSEUM LISBOA CARD PARTNER

**Everything about Fado and the Portuguese guitar.**

Largo do Chafariz de Dentro, Lisboa | T. (+351) 218 823 470  
 10am-6pm (last entry at 5.30pm). Closed: Monday, January 1, May 1 and December 25  
 ☎ 208, 728, 735, 759, 794  
 www.museudofado.pt



### O FORCADO

**With over 30 years of existence, this house is honored to have the great fado singer Amalia as its patron. This space offers Lisboa and Coimbra Fado, as well as folk songs every night from 8pm.**

Rua da Rosa, 221, Lisboa | T. (+351) 213 468 579  
 restaurante.oforcado@gmail.com  
 www.oforcado.com



### O FAIA

**Faia promises an unforgettable evening can listen to the words of great poets and classical themes of Fado to the sound of the guitar, Monday to Saturday from 9.30pm.**

Rua da Barroca, 56, Lisboa | T. (+351) 213 426 742  
 www.ofaia.com

## SPECIAL FADO



### PARREIRINHA DE ALFAMA

Is one of the oldest and most famous Fado restaurants of Lisbon, in one of the most typical neighborhoods. It was founded by Argentina Santos.

Beco do Espírito Santo, 1, Lisboa | T. (+351) 218 868 209  
info@parreirinhadealfama.com  
www.parreirinhadealfama.com



### SR. VINHO

Equally refined and traditional, a visit to Sr. Vinho promises an unforgettable evening, which will of course include a session of fado, from 9.30pm.

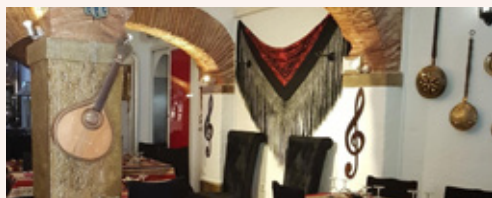
Rua do Meio à Lapa, 18, Lisboa | T. (+351) 213 972 681  
www.srvinho.com



### PÁTIO DE ALFAMA

Leaning against the first wall of the city (Cerca Velha), Pátio de Alfama is a must for all visitors to the city who wish to experience a unique evening to the sound of Fado.

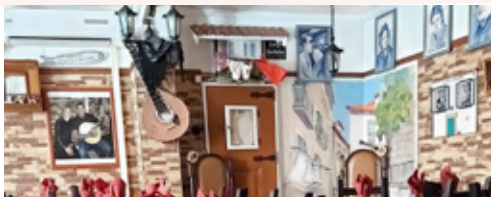
Rua São João Praça, 18, Lisboa | T. (+351) 215 873 415  
booking@pateodealfama.pt  
www.pateodealfama.com



### SÃO MIGUEL D'ALFAMA

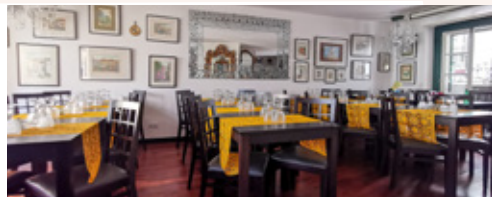
Rua de São Miguel, 9,11,15 e 17, Lisboa  
T. (+351) 960 191 881

info@saomiguelalfama.pt; saomiguelalfama@sapo.pt  
www.saomiguelalfama.com



### PORTA D'ALFAMA

Rua de São João da Praça,17-17 A, Lisboa  
tininhalfama@live.com.pt



### SÃO MIGUEL GRANDES CANTORIAS

Largo de São Miguel, 1-2, Lisboa  
T. (+351) 960 191 881

info@saomiguelgrandescantorias.com;  
www.saomiguelgrandescantorias.com



## TAVERNA D'EL REY

**With its wooden ceilings reminiscent of the caravels and its Portuguese cobblestone floors, Taverna d'El Rey is filled with Lisboa traditions. Here Fado shows are held every evening from 6pm to 3am.**

Largo do Chafariz de Dentro, 15, Lisboa | T. (+351) 218 876 754  
[www.tavernadelrey.com](http://www.tavernadelrey.com)

## SHOWS



## FADO IN CHIADO

### LISBOA CARD PARTNER

**In the show "Fado in Chiado" talented singers perform Fado and the music that makes it a national song.**

Cine Teatro Gymnasio. Rua da Misericórdia, 14, 2.º, Lisboa  
 T. (+351) 961 717 778

Monday to Saturday at 7pm  
[www.fadoinchiado.com](http://www.fadoinchiado.com)



## FADO MIUDINHO

**To delight children and adults, the fado is transformed to the measure of the seas and fills the stage in front of the center aquarium of the Oceanarium. Reservation required.**

Oceanário de Lisboa, Parque das | Nações  
 T. (+351) 218 917 002/06

First and third Sunday of the month, 9am  
[reservas@oceanario.pt](mailto:reservas@oceanario.pt)



## LISBOA EM FADO

**Every day at 6 pm, a memorable show with four fantastic artists who express the Portuguese soul through our song: FADO.**

Rua do Crucifixo, 82-84, Lisboa | T. (+351) 911 777 388

[lisboaemfado@gmail.com](mailto:lisboaemfado@gmail.com)  
[www.lisboaemfado.pt](http://www.lisboaemfado.pt)

## SING FADO

Largo do Chafariz de Dentro, 1, Lisboa

T. (+351) 933 697 788

[reservasportugal@singfado.com](mailto:reservasportugal@singfado.com)  
[www.singfado.com](http://www.singfado.com)



## TASTING FADO

**A 60 minutes experience that includes a tour of the theater (national monument), a Fado exhibition, a Fado concert, a Port and a custard pastry.**

Avenida da Liberdade, 182 A, Lisboa

T. (+351) 962 298 377

Wednesday to Saturday, 7pm

[tastingfado@uau.pt](mailto:tastingfado@uau.pt)

[www.uau.pt](http://www.uau.pt)

## RESTAURANTS

### CITY CENTRE AND HISTORICAL QUARTERS

#### ALMA

Portuguese signature cuisine  
Rua Anchieta, 15, Lisboa  
T. (+351) 213 470 650  
Lunch, 12:30pm-3:30pm. Dinner,  
7pm-11pm. Closed: Monday  
alma@almalisboa.pt  
www.almalisboa.pt

#### BAIRRO DO AVILLEZ

Taberna: Snacks and small dishes;  
portuguese flavors reinvented;  
Páteo: Fish, seafood and portuguese  
flavors; Mini Bar: Creative cuisine and  
gastronomic bar; Pizzaria Lisboa:  
Mediterranean;  
Rua Nova da Trindade, 18, Lisboa  
T. (+351) 210 998 320  
Open every day  
Online reservations: bairrodoavillez.pt

#### BELCANTO

Revisited portuguese cuisine  
Rua Serpa Pinto, 10 A, Lisboa  
T. (+351) 213 420 607  
Lunch: 12:30 - 15:00  
Dinner: 19:00 - 23:00  
Closed on Sundays and Mondays  
Online reservations: belcanto.pt

#### CAFÉ MARTINHO DA ARCADEA

Portuguese and international cooking  
Praça do Comércio, 3, Lisboa  
T. (+351) 218 879 259  
Closed on Sunday  
www.martinhodaarcada.pt

#### CAFÉ PLAZA

Light meals  
Travessa do Salitre, 7, Lisboa  
T. (+351) 213 218 218  
Every day, 12 pm-10pm  
plaza.hotels@heritage.pt  
www.heritage.pt

#### CAN THE CAN

Mediterranean cuisine  
Terreiro do Paço, 82-83, Lisboa  
T. (+351) 914 007 100  
Every day, 9am-12am  
www.canthecanlisboa.com

#### CANTINHO DO AVILLEZ

Portuguese cuisine influenced by chef  
José Avillez's travels abroad  
Rua dos Duques de Bragança, 7, Lisboa  
T. (+351) 211 992 369  
Open every day: 12:30 - 15:00  
and 19:00 - 00:00  
Online reservations: cantinhodoavillez.pt

#### CERVEJARIA RIBADOURO

Portuguese cuisine  
Av. da Liberdade, 155, Lisboa  
T. (+351) 213 549 411  
Midnight-01.30am  
www.cervejariaribadouro.pt

#### CERVEJARIA TRINDADE

Portuguese cuisine  
Rua Nova da Trindade, 20-20D, Lisboa  
T. (+351) 213 423 506  
Noon-Midnight  
www.cervejariatrindade.pt

#### CHIADO CAFFÈ

Rua do Loreto, 45-47, Lisboa  
T. (+351) 213 460 828  
geral@chiadocaffe.pt

#### CHIADO TERRASSE

Mediterranean food  
Rua da Trindade, 28, Lisboa  
T. (+351) 913 271 977  
gallassa.chiado@gmail.com

#### NOTE - CERVEJARIA MODERNA

Rua Barata Salgueiro, 37 A, Lisboa  
T. (+351) 216 027 858  
dote@dote.pt  
www.dote.pt

#### DUETOS DA SÉ

Portuguese cuisine  
Travessa do Almargem, 1 B/C, Alfama,  
Lisboa  
T. (+351) 218 850 041  
Dinner and bar, 5pm-2am.  
Closed on Wednesday  
eduardolalatr@b@gmail.com  
www.duetosdase.com

#### ENCANTO

Vegetarian haute cuisine  
Largo de São Carlos, 10, Lisboa  
T. (+351) 211 626 310  
Dinner: 7 pm - 10:30 pm  
Closed on Sundays and Mondays  
Online reservations:  
encantojoseavillez.pt

#### ESTÓRIAS NA CASA DA COMIDA

Portuguese cuisine  
Travessa das Amoreiras, 1, Lisboa  
T. (+351) 213 860 889  
Closed: Sunday, Saturday and Monday  
at lunchtime. Tuesday to Friday, lunch,  
1pm-3pm, Monday to Saturday, dinner,  
8pm-noon  
comercial@casadacomida.pt  
www.casadacomida.pt

#### GALLASSA CAFÉ

Rua da Trindade, 36 B, Lisboa  
T. (+351) 913 271 977  
gallassa.chiado@gmail.com

#### GAMBRINUS

Portuguese cuisine  
Rua das Portas de Santo Antão, 25,  
Lisboa  
T. (+351) 213 421 466  
Noon-1.30am  
info@gambrinuslisboa.com  
www.gambrinuslisboa.com

#### GUILTY

Rua Barata Salgueiro, 28, Lisboa  
T. (+351) 211 913 590  
Monday to Wednesday, 12pm-  
-midnight. Thursday to Saturday,  
Noon-4am. Sunday, noon-midnight  
events@olivier.pt  
www.guilty.olivier.pt

#### JNCQUOI

Av. da Liberdade, 182-184, Lisboa  
T. (+351) 213 145 397  
info@jncquoi.com  
www.jncquoi.com

#### K.O.B.

Rua do Salitre, 139, Lisboa  
T. (+351) 934 000 949  
Monday to Friday, noon-3pm,  
8pm-1am. Saturday, 8pm-1am.  
Sunday, 8pm-11pm  
events@olivier.pt  
www.kob.olivier.pt

#### LA BRASSERIE DE L'ENTRECOTE

Rua do Alecrim, 117-121, Lisboa  
T. (+351) 213 473 616  
Lunch, 12.30am-3pm.  
Dinner, 7.30pm-midnight  
www.brasserieentrecote.pt



**LISBOA À NOITE**

Portuguese cuisine  
Rua das Gáveas, 69, Lisboa  
T. (+351) 213 468 557  
Closed on Sundays.  
Lunches only with prior booking  
www.lisboanoite.com

**MARISQUEIRA AZUL**

Terreiro do Paço, 70, Lisboa  
T. (+351) 218 863 065  
www.marisqueirazul.pt

**MAXIME RESTAURANTE**

Gastronomic experience; dinner shows; cabaret, comedy, burlesque.  
Praça da Alegria, 58, Lisboa  
T. (+351) 218 716 600  
Dinners: from Wednesday to Saturday, from 5:00 pm to 23:00 pm; Bar: Sunday to Tuesday, from 4:00 pm to 11:30 pm and from Wednesday to Saturday, from 5:00 pm to 00:30 am  
esperaporti@maximerestaurante.com  
www.maximerestaurantelisboa.com/

**MERCANTINA**

Italian cuisine  
Rua da Misericórdia, 114, Lisboa  
T. (+351) 231 070 013/917 243 933  
Monday to Thursday, 12pm-3:30pm, 7pm-11:30pm. Friday, 12pm-3:30pm, 7pm-12am. Saturday, 12:30pm-3:30pm, 7pm-12am. Sunday, 12:30pm-3:30pm, 7pm-11:30pm.  
geral@mercantina.pt  
www.mercantina.pt

**MINISTERIUM**

Portuguese cuisine  
Terreiro do Paço, Ala Nascente, 72-73, Lisboa  
T. (+351) 218 888 454 / 916 378 555  
Monday to Sunday, 10am-11pm.  
comercial@ministerium.pt  
www.ministerium.pt

**MUSEU DA CERVEJA**

Portuguese cuisine  
Enjoy the best that Portuguese cuisine has to offer. Visit the museum and embark on an adventure through the history of beer!  
Terreiro do Paço, 62-65, Lisboa  
T. (+351) 210 987 656  
Todos os dias, 12:00-00:00  
info@museudacerveja.pt  
www.museudacerveja.pt

**NOORI SUSHI**

Armazéns do Chiado, Rua Crucifixo, 87, Lisboa  
T. (+351) 918 639 287  
geral@noori.pt  
www.noori.pt

**NOSOLO ITÁLIA PRAÇA DO COMÉRCIO**

International cuisine  
Terreiro do Paço, Ala Nascente, 74/77, Lisboa  
T. (+351) 218 873 226  
Every day, 10am-1am  
lisboa.pcomercio@nosoloitalia.com  
www.nosoloitalia.com

**OPEN BRASSERIE MEDITERRÂNICA**

Mediterranean cuisine  
Rua de Santa Marta, 48, Lisboa  
T. (+351) 210 440 900  
Monday to Friday (lunch 12.30pm-2.30pm, except holidays), all nights (dinner 7.30pm-10.30pm)  
recepcao.ismh@inspirahotels.com  
www.inspirahotels.com

**PALÁCIO CHIADO**

Portuguese and international cuisine  
Rua do Alecrim, 70, Lisboa  
T. (+351) 210 101 184  
Sunday to Thursday: 12pm-12am  
Fridays and Saturdays: 12pm-2am  
www.palaciochiado.pt  
geral@palaciochiado.pt

**REAL COZINHA**

Portuguese traditional food.  
Rua Tomás Ribeiro, 115, Lisboa  
T. (+351) 213 199 500  
Every day, from 12:30 pm to 03:30 pm and from 07:30 pm to 10:30 pm; Sunday brunch, from 12:30 pm to 4:00 pm.  
rpl@realhotelsgroup.com  
www.realpalacio.realhotelsgroup.com/restaurants-lisbon/real-cozinha-restaurant-bar/

**TERRA NOVA BY POPULI**

International food  
Ala Nascente, Terreiro do Paço, 85-86, Lisboa  
T. (+351) 218 877 395  
Monday to Sunday, lunch, 12.30pm-3pm. Sunday to Wednesday, dinner, 7.30pm-23pm. Thursday to Saturday, 7.30pm-midnight. Sunday, brunch, 11.30am-2.30pm  
geral@terranoavabypopuli.pt  
www.terranoavabyypopuli.pt

**RESTAURANTE A TRAVESSO DO FADO**

Largo do Chafariz de Dentro, 1, Lisboa  
T. (+351) 218 870 144  
geral@atravessadofado.com

**RESTAURANTE AZUL E BRANCO**

Mediterranean food  
Av. Duque de Loulé, 81-83, Lisboa  
T. (+351) 212 182 000  
Every day, 7pm-10:30pm  
sales.hdl@h10hotels.com  
www.hotelh10duquedeloule.com

**RESTAURANTE DOIS ARCOS**

Portuguese cuisine  
Rua dos Douradores, 163, Lisboa  
T. (+351) 218 879 689  
12pm-10pm. Closed on Sunday  
cides.lopes@gmail.com

**RESTAURANTE FAMA DE ALFAMA**

Rua do Terreiro do Trigo, 80, Lisboa  
T. (+351) 218 862 608  
famadealfama@gmail.com

**RESTAURANTE GRANJA VELHA**

Portuguese cuisine  
Rua dos Douradores, 200, Lisboa  
T. (+351) 218 873 891  
12pm-3pm, 7pm-10pm.  
Closed on Sunday  
www.granjavelha.com

**RESTAURANTE OS TIBETANOS**

Rua do Salitre, 117, Lisboa  
Saturday: 12.45pm-3pm/ 8pm-11pm.  
Sunday: 12.45pm-3pm/7.30pm-10.30pm  
info@tibetanos.com  
www.tibetanos.com

## RESTAURANTS

### RESTAURANTE VARANDA

#### DE LISBOA

Portuguese cuisine  
Hotel Mundial, Praça Martim Moniz,  
2, Lisboa  
T. (+351) 218 842 000  
Winter, 7.30pm-10pm. Summer,  
7.30pm-10.30pm  
www.varandadelisboa.pt

### RESTAURANTE VEGETARIANO PSI

Alameda Santo António dos Capuchos,  
Campo Mártires da Pátria, Lisboa  
T. (+351) 213 590 573  
Monday to Saturday, 12.30pm-3.30pm  
and 7.30pm-10.30pm. Closed on  
Sunday  
psiveg@gmail.com  
www.restaurante-psi.com

### RIB BEEF & WINE

#### Steakhouse

Praça do Comércio, 31-34, Lisboa  
T. (+351) 968 578 962  
Sunday to Thursday, 12:30pm-3pm;  
7:30pm-10:30pm. Friday and Saturday,  
12:30pm-3pm; 7:30pm-11pm  
restaurante.pousadalisboa@pestanda.  
com  
www.pousadas.pt/hotel/pousada-  
lisboa

### SILK CLUB

Restaurante, Bar, Club  
Traditional Japanese Cuisine  
Rua da Misericórdia, 14, Lisboa  
T. (+351) 913 009 193  
Tuesday to Saturday, from 7pm  
events@silk-club.com  
www.silk-club.com

### SOLAR DOS PRESUNTOS

Rua Portas de Santo Antão,  
150, Lisboa  
T. (+351) 213 424 253  
restaurante@solarospresuntos.com  
www.solarospresuntos.com

### TASCA DA ESQUINA

Rua Domingos Sequeira, 41C, Lisboa  
T. (+351) 919 837 255  
info@tascadaesquina.com

### THE DECADENTE

#### RESTAURANTE & BAR

Local, uncomplicated food and  
drinks, sustainable practices and a  
comfortable environment. Grill, raw  
bar and signature cocktails.  
Doca S. Pedro de Alcântara, 81,  
Lisboa  
T. (+351) 213 461 381  
From Sunday to Thursday, from 7 pm  
to 11 pm and from Friday to Saturday,  
from 7 pm to 12 am  
geral@thedecadente.pt  
www.thedecadente.pt

### YAKUZA FIRST FLOOR

Japanese and asian cuisine  
Rua Escola Politécnica, 231, 1.º Esq.,  
Lisboa  
T. (+351) 934 000 913  
Thursday to Friday 12:30pm-3pm,  
8pm-12pm, Saturday 8pm-12pm.  
Closed on Monday  
events@olivier.pt  
www.yakuza.olivier.pt

### ZAMBEZE

Regional cuisine and African cuisine  
Calçada Marquês de Tancos, Lisboa  
T. (+351) 218 877 056  
Every day, 10am-11pm  
www.zambezerestaurante.pt

## FROM PRAÇA DO COMÉRCIO TO BELÉM

### A TRAVESSA

Portuguese cuisine  
Travessa do Convento das Bernardas,  
12, Lisboa  
T. (+351) 213 902 034  
Closed: Sunday, Monday and Saturday  
at lunch time  
www.atraversa.com

### CAFÉ IN

Portuguese and international cuisine  
Av. Brasília, 311, Lisboa  
T. (+351) 213 626 248  
12pm-4pm and 8pm-12am. Terrace  
área, 10am-03.10am  
www.cafein.pt

### ESPAÇO ESPELHO D'ÁGUA

Portuguese, Brazilian, African  
and Asian cuisine  
Av. Brasília, S/N, Belém, Lisboa  
T. (+351) 213 010 510  
Sunday to Thursday, 11am-12pm.  
Friday to Saturday, 11am-1am  
info@espacoesselhohodeagua.com  
www.espacoesselhohodeagua.com

### ESTUFA REAL

Mediterranean cuisine  
Jardim Botânico da Ajuda, Calçada do  
Galvão, Lisboa  
T. (+351) 213 619 400  
Lunches only  
geral@estufareal.pt  
www.estufareal.com

### IBO RESTAURANTE

Portuguese and Mozambican cuisine  
Armazém A, compartimento 2, Lisboa  
T. (+351) 213 423 611/961 332 024  
Tuesday to Thursday, 12.30pm-11pm.  
Friday to Saturday, 12.30pm-1am.  
Sunday, 12.30pm-3.30pm.  
Closed on Monday  
www.ibo-restaurante.pt

### KAIS

International and Portuguese cuisine  
Cais da Viscondessa, Rua da Cintura,  
Santos, Lisboa  
T. (+351) 213 932 930  
Closed: Sunday and Monday  
www.kais-k.com

### MONTE MAR LISBOA

Specialties fresh fish and seafood  
Rua da Cintura, Armazém 65  
Cais do Sodré, Lisboa  
T. (+351) 213 220 160  
From Tuesday to Sunday, 12am-11pm  
sales@onyriaresorts.com  
www.mmlisboa.pt

### NUNES REAL MARISQUEIRA

Seafood Restaurant  
Rua Bartolomeu Dias, 172, Lisboa  
T. (+351) 213 019 899  
From Tuesday to Sunday, from 12 pm  
to 12 am. Closes on Monday.  
geral@nunesmarisqueira.pt  
www.nunesmarisqueira.pt

**PAP'AÇORDA**

Portuguese cuisine  
Mercado da Ribeira, Av. 24 de Julho, 49, 1.º, Lisboa  
T. (+351) 213 464 811  
Sunday, Tuesday and Wednesday, noon-midnight. Thursday, Friday and Saturday, midnight-2am  
reservations@papacorda.com  
papacorda.com

**PÁTEO ALFACINHA RESTAURANTE HORTA**

Portuguese cuisine  
Rua do Guarda Jóias, 44, Lisboa  
T. (+351) 213 642 171  
comercial@pateoalfacinha.com  
www.pateoalfacinha.com/  
restaurants

**PORTUGÁLIA CERVEJARIA BELÉM**

Av. Brasília, Edf. Espelho d'Água, Lisboa  
T. (+351) 213 032 700  
Noon-midnight  
www.portugalia.pt

**PORTUGÁLIA CERVEJARIA CAIS DO SODRÉ**

Rua Cintura do Porto de Lisboa, Lisboa  
T. (+351) 213 422 138  
Noon-midnight  
www.portugalia.pt

**POVO**

Rua Nova do Carvalho, 32, Lisboa  
T. (+351) 213 473 403  
povo@ctlisbon.com  
www.povolisboa.com

**RESTAURANTE FEITORIA & WINE BAR**

Altis Belém Hotel & Spa, Doca do Bom Sucesso, Lisboa  
T. (+351) 210 400 200/208  
Open Monday to Saturday.  
Dinner: 7.30pm-11pm  
reservationsbeleem@altishotels.com  
www.restaurantefeitoria.com

**RESTAURANTE GEOGRAPHIA**

Portuguese cuisine and lusophone influences  
Rua do Conde, 1, Lisboa  
T. (+351) 213 960 036  
Monday to Saturday: 12:30pm-3pm/  
/7:30pm-11:30pm  
ola@restaurantegeographia.pt  
www.restaurantegeographia.pt

**SEGUNDO MUELLE**

Peruvian food  
Praça Dom Luís I, 30, loja 4B, Lisboa  
T. (+351) 210 133 540  
Monday to Thursday and Sunday, 12pm-12am. Friday and Saturday, 12pm-1am  
sm.lisboa@segundomuelle.pt  
www.segundomuelle.com

**SUD LISBOA TERRAZA**

Italo-Mediterranean  
Av. Brasília, Pavilhão Poente, Lisboa  
T. (+351) 211 592 700  
Every day, 11am-2am  
comercial@sudlisboa.com  
www.sudlisboa.com

**VALLE FLÔR**

Portuguese cuisine  
Rua Jau, 54, Lisboa (Pestana Palace)  
T. (+351) 213 615 600  
Breakfast, 6.30am-10.30am.  
Weekends and holidays, 6.30am-11am. Lunch, 12.30pm-3.30pm.  
Dinner, 7pm-10.30pm  
restaurant.valle-flor@pestana.com  
www.pestana.com

**5 OCEANOS**

Doca de Santo Amaro, Armazém 12, Lisboa  
T. (+351) 213 978 015  
Everyday, noon-1pm  
www.5oceanos.pt

**FROM PRAÇA DO COMÉRCIO TO PARQUE DAS NAÇÕES**

**RESTAURANTE D' BACALHAU**

Rua da Pimenta, 45, Parque das Nações, Lisboa  
T. (+351) 218 941 296  
Every day, 12pm-4pm; 7pm-11pm  
www.restaurantebacalhau.com

**RESTAURANTE GOLF SPOT**

Portuguese and Japanese cuisine  
Azinhaga das Galhardas, Lisboa  
T. (+351) 969 340 713  
Breakfast: 10.00am-12:00pm  
Lunches: Tuesday to Sunday, 12:00pm-3:30pm. Dinners: Tuesday to Saturday, 7:30pm-10:30pm.  
Closes on Monday  
restaurantgolfspot@academiadegolfedelisboa.pt  
www.academiadegolfedelisboa.pt

**RESTAURANTE MANJERICO ALEGRE**

Rua Terreiro do Trigo, 94, Lisboa  
T. (+351) 210 532 846  
manjerico.alegre@gmail.com

**SENHOR PEIXE**

Rua da Pimenta, 35-37, Lisboa  
T. (+351) 218 955 892  
Closed on Monday  
www.senhorpeixe.pt

**AVENIDAS NOVAS**

**ELEVEN**

Mediterranean cuisine  
Rua Marquês de Fronteira, Jardim Amália Rodrigues, Lisboa  
T. (+351) 213 862 211  
Closed on Sunday  
www.restauranteleven.com

**PORTUGÁLIA CERVEJARIA**

Av. Almirante Reis, 117, Lisboa  
T. (+351) 213 140 002  
12:00-00:00. Noon-midnight  
www.portugalia.pt

**RESTAURANTE TÍPICO O MADEIRENSE**

Traditional Madeira cuisine  
Amoreiras Shopping Center, Loja 3026/7, Lisboa  
T. (+351) 213 830 827  
Every day 12pm-11pm  
www.omadeirense.pt

**THE LINGERIE RESTAURANT**

Portuguese cuisine  
Av. António Augusto de Aguiar, 88A, Lisboa  
T. (+351) 915 672 450  
From Wednesday to Friday 8:30pm-01:00am; On Saturday 07:00pm-10:00pm or 10:15pm-02:00am  
lingierielisboa@gmail.com  
www.lisboa.thelingerierestaurant.com

**OTHERS**

**RESTAURANTE JARDIM DA LUZ**

Quartel da Formação, Largo da Luz, Carnide  
T. (+351) 210 134 209  
geral@jardimdaluz.pt

**OUT OF TOWN****CAFÉ PARIS**

Portuguese and International cuisine  
Praça da República, 32 R/C, Sintra  
T. (+351) 219 105 860  
Every day, 9am-11pm  
comercial@screstauracao.com  
www.screstauracao.com

**CENTRAL PALACE HOTEL**

Portuguese and International cuisine  
Praça da República, 34-36 R/C, Sintra  
T. (+351) 219 105 860  
Every day, 9am-11pm  
comercial@screstauracao.com  
www.screstauracao.com

**COZINHA VELHA**

Portuguese cuisine  
Pousada de Queluz - Dona Maria I  
- Largo do Palácio, Queluz  
T. (+351) 214 350 232  
Lunch, 12.30pm-3pm  
Dinner, 7.30pm-10pm  
www.pousadas.pt

**MONTE MAR CASCAIS**

Av. Nossa Senhora do Cabo, 2845,  
Cascais  
T. (+351) 214 869 270  
montemar@onyriatesorts.com  
www.mmcascais.pt

**RESTAURANTE FORTALEZA DO GUINCHO**

Estrada do Guincho, 2413, Cascais  
T. (+351) 214 870 491  
reservations@guinchotel.pt  
www.fortalezadoguincho.com/  
restaurant-fortaleza-do-guincho

**DISCO AND PUBS****HAVANA**

Doca de Santo Amaro, Armazém 5,  
Alcântara  
T. (+351) 213 979 893  
Every day, 11am-6am  
info@havana.mail.pt  
www.grupodoubleh.com

**REAL SPORTS BAR**

Watch your favorite sport.  
Snacks, hamburgers and beer.  
Rua São Sebastião da Pedreira,  
234 C, Lisboa  
T. (+351) 213 199 500  
Every day, from 3:30 pm to 12 am.  
rpl@realhotelsgroup.com  
www.realpalacio.realhotelsgroup.com/  
restaurants-lisbon/real-sports-bar/

**HOTELS**

★★★★

**ALTIS AVENIDA HOTEL**

Rua 1.º de Dezembro, 120, Lisboa  
T. (+351) 210 440 000  
reservationsavenida@altishotels.com  
www.altishotels.com

**ALTIS BELÉM HOTEL & SPA**

Doca do Bom Sucesso, Lisboa  
T. (+351) 210 400 200  
reservationsbelem@altishotels.com  
www.altishotels.com

**ALTIS GRAND HOTEL**

Rua Castilho, 11, Lisboa  
T. (+351) 213 106 000  
reservations@altishotels.com  
www.altishotels.com

**BAIRRO ALTO HOTEL**

Praça Luís de Camões, 2, Lisboa  
T. (+351) 213 408 288  
info@bairroaltohotel.com  
www.bairroaltohotel.com

**CORINTHIA HOTEL LISBON**

Av. Columbano Bordalo Pinheiro, 105,  
Lisboa  
T. (+351) 217 236 363  
lisbon@corinthia.com  
www.corinthia.com

**CORPO SANTO HOTEL**

Largo do Corpo Santo,  
23-25, Lisboa  
T. (+351) 218 288 000  
info@corposantohotel.com  
www.corposantohotel.com

**DOLCE CAMPOREAL LISBOA**

Rua do Campo, Turcifal  
T. (+351) 261 960 900  
camporeal.guestservices@dolce.com  
www.dolcecamporeal.com

**EDITORY RIVERSIDE**

Av. Infante D. Henrique, 1, Lisboa  
T. (+351) 219 022 300  
riverside@editorystudios.pt  
editorystudios.com/riverside-apollonia-lisboa

**EPIC SANA LISBOA**

Av. Eng.º Duarte Pacheco, 15  
T. (+351) 212 468 688  
reservations@sanahotels.com  
T. (+351) 211 597 305  
info.lisboa@epic.sanahotels.com  
www.sanahotels.com

**EUROSTARS DAS LETRAS**

Rua Castilho, 6-12, Lisboa  
T. (+351) 213 573 094  
info@eurostarsdasletras.com  
www.eurostarsdasletras.com

**EVOLUTEE HOTEL**

Cabeço da Serra - Vau, Óbidos  
T. (+351) 262 240 220  
info@evoluteehotel.com  
www.evoluteehotel.com

**FAROL HOTEL**

Av. Rei Humberto II de Itália, 7,  
Cascais  
T. (+351) 214 823 490  
farol@farol.com.pt  
www.farol.com.pt

**FONTECRUZ LISBOA AUTOGRAPH COLLECTION**

Av. da Liberdade, 138-142, Lisboa  
T. (+351) 210 410 000  
reception@fontecruzlisboa.com  
www.fontecruzhotels.com

**GRANDE REAL VILLA ITÁLIA HOTEL & SPA**

Rua Frei Nicolau de Oliveira,  
100, Cascais  
T. (+351) 210 966 000  
realvillaitalia@hoteisreal.com  
www.realhotelsgroup.com

**HOTEL ALBATROZ**

Rua Frederico Arouca, 100, Cascais  
T. (+351) 214 847 380  
info@thealbatrozcollection.com  
www.thealbatrozcollection.com

**HOTEL AVENIDA PALACE**

Rua 1.º de Dezembro, 123, Lisboa  
T. (+351) 213 218 100  
reservas@hotelavenidapalace.pt  
www.hotelavenidapalace.pt

**HOTEL CASA DE PALMELA**

EN 10 KM 33,5, Setúbal  
T. (+351) 265 249 650  
reservation-casapalmela@ouh.pt  
www.hotelcasapalmela.pt

**HOTEL CASCAIS MIRAGEM**

Av. Marginal, 8554, Cascais  
T. (+351) 210 060 600  
geral@cascaismirage.com  
www.cascaismirage.com

**HOTEL DOM PEDRO LISBOA**

Av. Eng.º Duarte Pacheco, 24, Lisboa  
T. (+351) 213 896 600  
lisboa.reservations@dompoko.com  
www.dompoko.com

**HOTEL FORTALEZA DO GUINCHO**

Estrada do Guincho, 2413, Cascais  
T. (+351) 214 870 491  
reservations@guinchotel.pt  
www.fortalezadoguincho.com

**HOTEL OLISSIPPO LAPA PALACE**

Rua Pau de Bandeira, 4, Lisboa  
T. (+351) 213 949 494  
info.lapa@olissippohotels.com  
www.olissippohotels.com

**HOTEL PALÁCIO DO GOVERNADOR**

Rua Bartolomeu Dias, 117, Lisboa  
T. (+351) 212 467 800  
bookings@nauhotels.com  
www.nauhotels.com

**HOTEL PORTO BAY LIBERDADE**

Rua Rosa Araújo, 8, Lisboa  
T. (+351) 210 015 700  
portobayliberdade@portobay.pt  
www.portobay.com

**HOTEL QUINTA DA MARINHA RESORT**

Rua das Palmeiras, Quinta da  
Marinha, Cascais  
T. (+351) 214 860 100  
sales@onyriaresorts.com  
www.quintadamarinha.com

**HOTEL REAL PALÁCIO**

Rua Tomás Ribeiro, 115, Lisboa  
T. (+351) 213 199 500  
info@hoteisreal.com  
www.realhotelsgroup.com

**HOTEL SOFITEL LISBON LIBERDADE**

Av. da Liberdade, 127, Lisboa  
T. (+351) 213 228 300  
h1319@sofitel.com  
www.sofitel-lisboa.com

**HOTEL TIVOLI - LISBOA**

Av. da Liberdade, 185, Lisboa  
T. (+351) 213 198 900  
avenidaliberdade@tivolihotels.com  
www.tivolilisboa.com

**HOTEL TIVOLI - PALÁCIO DE SETEAIS**

Av. Barbosa du Bocage, 8, Seteais,  
Sintra  
T. (+351) 219 233 200  
gr.palacioseteais@tivolihotels.com  
www.tivolipalacioseteais.com

**HOTEL VALVERDE**

Av. da Liberdade, 164, Lisboa  
T. (+351) 210 940 300  
info@valverdehotel.com  
www.valverdehotel.com

**HOTEL VILA GALÉ COLLECTION PALÁCIO DOS ARCOS**

Largo Conde das Alcáçovas,  
Paço de Arcos  
T. (+351) 210 493 200  
palacio.reservas@vilagale.com  
www.vilagale.com

**HOTEL VILA GALÉ SINTRA**

Rua Fonte da Granja, 30, Sintra  
T. (+351) 210 520 000  
sintra@vilagale.com  
www.vilagale.com

**HYATT REGENCY LISBON**

Rua da Junqueira, 63, Lisboa  
T. (+351) 21 482 9123  
hyatt.com/pt-PT/hotel/portugal/  
/hyatt-regency-lisbon/lishr

**IBEROSTAR LISBOA**

Rua Castilho, 64, Lisboa  
T. (+351) 215 859 000  
lisboa@iberostar.com  
www.iberostar.com/pt/hoteis/lisboa

**IMMERSO**

Rua Bica da Figueira, Marvão, Ericeira  
T. (+351) 261 104 420  
info@immerso.pt  
immerso.pt

**INTERCONTINENTAL CASCAIS-ESTORIL**

Avenida Marginal, 8023, Monte Estoril  
T. (+351) 218 291 100  
liset.reservations@ihg.com  
estorilintercontinental.com

**INTERCONTINENTAL LISBON**

Rua Castilho, 149, Lisboa  
T. (+351) 213 818 700  
lisha.reservations@ihg.com  
www.intercontinental.com

**MEMMO PRINCIPE REAL**

Rua D. Pedro V, 56, Lisboa  
T. (+351) 219 016 800  
preal@memmohotels.com  
memmohotels.com

**MYRIAD BY SANA HOTELS**

Cais das Naus, Lote 2.21.01, Lisboa  
T. (+351) 212 468 688  
reservations@sanahotels.com  
T. (+351) 211 107 600  
info@myriad.pt  
www.sanahotels.com

**PALÁCIO ESTORIL HOTEL GOLF & SPA**

Rua Particular, Estoril  
T. (+351) 214 648 000  
info@hotelestorilpalacio.pt  
www.palacioestorilhotel.com

**PALÁCIO LUDOVICE WINE EXPERIENCE HOTEL**

Rua de São Pedro de Alcântara,  
39-49, Lisboa  
T. (+351) 211 513 850  
sales@palacioludovice.com  
www.palacioludovice.com

**PENHA LONGA RESORT**

Estrada da Lagoa Azul, Linhó, Sintra  
T. (+351) 219 249 011  
resort.penhalonga@penhalonga.com  
www.penhalonga.com

**PESTANA PALACE HOTEL & NATIONAL MONUMENT**

Rua Jau, 54, Lisboa  
T. (+351) 213 615 600  
reception.cph@pestana.com  
www.pestana.com

## ACCOMMODATION

### PRAIA D'EL REY MARRIOTT GOLF & BEACH RESORT

Av. Dona Inês de Castro, 1,  
Vale de Janelas, Amoreira, Óbidos  
T. (+351) 262 905 100  
info.pdr@marriott-pdr.pt  
www.praia-del-rey.com

### RITZ FOUR SEASONS HOTEL LISBOA

Rua Rodrigo da Fonseca, 88, Lisboa  
T. (+351) 213 811 400  
reservations.lis@fourseasons.com  
www.fourseasons.com

### SHERATON LISBOA HOTEL & SPA

Rua Latino Coelho, 1, Lisboa  
T. (+351) 213 120 000  
sheraton.lisboa@sheraton.com  
www.sheratonlisboa.com

### THE IVENS HOTEL

Rua Capelo, 5, Lisboa  
T. (+351) 210 543 135  
book@theivenshotel.com  
www.theivenshotel.com

### THE LUMIARES HOTEL & SPA

Rua Diário de Notícias, 142, Lisboa  
T. (+351) 211 160 200  
info@thelumiars.com  
www.thelumiars.com

### THE OITAVOS

Rua de Oitavos, Quinta da Marinha,  
Cascais  
T. (+351) 214 860 020  
info@theoitavos.com  
www.theoitavos.com

### THE ONE PALÁCIO DA ANUNCIADA

Rua das Portas de Santo Antão,  
112-134, Lisboa  
T. (+351) 210 412 300  
info.hpa@hotelstheone.com  
www.hotelstheone.com

### THE VINTAGE LISBOA HOTEL

Rua Rodrigo da Fonseca, 2, Lisboa  
T. (+351) 210 405 400  
info@thevintagelisbon.com  
www.thevintagelisbon.com

### VIP GRAND LISBOA HOTEL & SPA

Av. 5 de Outubro, 197, Lisboa  
T. (+351) 210 435 000  
hotelviplisboa@viphotels.com  
www.viphotels.com

★★★★

### 1908 LISBOA HOTEL

Largo do Intendente Pina Manique,  
6, Lisboa  
T. (+351) 218 804 000  
info@1908lisboahotel.com  
www.1908lisboahotel.com

### AROEIRA LISBON HOTEL – SEA & GOLF RESORT

Av. Pinhal da Aroeira, 1, Herdade  
da Aroeira, Charneca da Caparica  
T. (+351) 210 514 999  
geral@aroeiralisboahotel.com  
www.aroeiralisboahotel.com

### AVANI AVENIDA LIBERDADE

Rua Júlio César Machado, 7, Lisboa  
T. (+351) 213 591 000  
lisbon@avani-hotels.com  
www.avanihotels.com

### BESSAHOTEL LIBERDADE

Av. da Liberdade, 29-41, Lisboa  
T. (+351) 213 210 500  
info@liberdade@bessahotel.com  
www.bessahotel.com

### CZAR LISBON HOTEL

Av. Almirante Reis, 103, Lisboa  
T. (+351) 211 115 200  
reservas@czarlisbonhotel.com  
www.czarlisbonhotel.com

### DOUBLETREE BY HILTON LISBON – FONTANA PARK

Rua Eng. Vieira da Silva, 2, Lisboa  
T. (+351) 210 410 600  
lisbonfontanapark.info@hilton.com  
www.doubletree3.hilton.com

### EVIDÊNCIA BELVERDE ATTITUDE HOTEL

Av. de Belverde, 70, Belverde, Seixal  
T. (+351) 210 426 900  
belverde@evidenciahoteis.com  
www.evidenciabelverde.com

### EVOLUTION LISBOA

Praça Duque de Saldanha, 4, Lisboa  
T. (+351) 212 468 688  
reservations@sanahotels.com  
T. (+351) 211 590 200  
hello.lisboa@evolution-hotels.com  
www.sanahotels.com

### FOUR POINTS BY SHERATON SESIMBRA

Rua 4 de Maio, Lote 50,  
Altinho de São João, Sesimbra  
T. (+351) 210 518 370  
www.marriott.com/LISFP

### H10 DUQUE DE LOULÉ

Av. Duque de Loulé, 81-83, Lisboa  
T. (+351) 213 182 000  
reservations.hdl@h10hotels.com  
www.hotelh10duquedeloule.com

### HERITAGE AV. LIBERDADE HOTEL

Av. da Liberdade, 28, Lisboa  
T. (+351) 213 404 040  
avliberdade@heritage.pt  
www.heritage.pt

### HF FÉNIX LISBOA

Praça Marquês de Pombal, 8, Lisboa  
T. (+351) 213 716 661  
booking@lisboa@hfhhotels.com  
www.hfhhotels.com

### HF FÉNIX URBAN

Av. António Augusto de Aguiar, 14,  
Lisboa  
T. (+351) 213 515 000  
booking.urban@hfhhotels.com  
www.hfhhotels.com

### HOLIDAY INN LISBOA

Av. António José de Almeida, 28A,  
Lisboa  
T. (+351) 210 044 000  
hil@grupo-continental.com  
www.holidayinn.com/lisbonprt

### HOLIDAY INN LISBON CONTINENTAL

Rua Laura Alves, 9, Lisboa  
T. (+351) 210 046 000  
hic@grupo-continental.com  
www.grupo-continental.com

### HOTEL AÇORES LISBOA

Av. Columbano Bordalo Pinheiro, 3,  
Lisboa  
T. (+351) 217 222 920  
hotelacoreslisboa@bensaude.pt  
www.bensaude.pt

### HOTEL BRITANIA

Rua Rodrigues Sampaio, 17, Lisboa  
T. (+351) 213 155 016  
britania.hotel@heritage.pt  
www.heritage.pt

**HOTEL DA ESTRELA**

Rua Saraiva de Carvalho, 35, Lisboa  
T. (+351) 211 900 100  
hotel.daestrela@unlockhotels.com  
www.hoteldaeestrela.com

**HOTEL DO MAR**

Rua General Humberto Delgado, 10,  
Sesimbra  
T. (+351) 212 288 300  
hoteldomar@hoteldomar.pt  
www.hoteldomar.com

**HOTEL ESTORIL EDEN**

Av. de Sabóia, 209, Monte Estoril  
T. (+351) 214 667 600  
geral@hotelestorileden.pt  
www.hotelestorileden.pt

**HOTEL FLÓRIDA**

Rua Duque de Palmela, 34, Lisboa  
T. (+351) 213 576 145  
sales@hotel-florida.pt  
www.hotel-florida.pt

**HOTEL LISBOA PLAZA**

Travessa do Salitre, 7, Lisboa  
T. (+351) 213 218 218  
plaza.hotels@heritage.pt  
www.heritage.pt

**HOTEL MARQUÊS DE POMBAL**

Av. da Liberdade, 243, Lisboa  
T. (+351) 213 197 900  
info@hotel-marquesdepombal.pt  
www.hotel-marquesdepombal.pt

**HOTEL MELIA SETÚBAL**

Av. Alexandre Herculano, 58, Setúbal  
T. (+351) 265 240 400  
melia.setubal@meliaportugal.com  
www.meliasetubal.com

**HOTEL MERCURE LISBOA**

Av. José Malhoa, 23, Lisboa  
T. (+351) 217 208 000  
h3346@accor.com  
www.mercure.com

**HOTEL MUNDIAL**

Praça Martim Moniz, 2, Lisboa  
T. (+351) 218 842 000  
reservations@hotel-mundial.net  
www.hotel-mundial.pt

**HOTEL NH CAMPO GRANDE**

Campo Grande, 7, Lisboa  
T. (+351) 217 957 555  
nhcampogrande@nh-hotels.com  
www.nh-hotels.com

**HOTEL NH COLLECTION****LIBERDADE**

Av. da Liberdade, 180 B, Lisboa  
T. (+351) 213 514 060  
nhliberdade@nh-hotels.com  
www.nh-hotels.com

**HOTEL NOVOTEL LISBOA**

Av. José Malhoa, 1-1A, Lisboa  
T. (+351) 217 244 800  
h0784@accor.com  
www.accorhotels.com

**HOTEL REAL OEIRAS**

Rua Álvaro Rodrigues de Azevedo, 5,  
Paço de Arcos  
T. (+351) 214 469 900  
roe@realhotelsgroup.com  
www.realoeiras.realhotelsgroup.com

**HOTEL SMY LISBOA**

Rua da Artilharia, 1, 112, Lisboa  
T. (+351) 212 484 900  
info.lisboa@smyhotels.com  
www.smyhotels.com

**HOTEL OLISSIPPO CASTELO**

Rua Costa do Castelo, 126, Lisboa  
T. (+351) 218 820 190  
info.oc@olissippohotels.com  
www.olissippohotels.com

**HOTEL OLISSIPO MARQUÊS DE SÁ**

Av. Miguel Bombarda, 130, Lisboa  
T. (+351) 217 911 014  
rsv@olissippohotels.com  
www.olissippohotels.com

**HOTEL OLISSIPPO ORIENTE**

Av. Dom João II, 32,  
Parque das Nações, Lisboa  
T. (+351) 218 929 100  
rsv@olissippohotels.com  
www.olissippohotels.com

**HOTEL OLISSIPPO SALDANHA**

Av. Praia da Vitória, 30, Lisboa  
T. (+351) 210 006 690  
info.os@olissippohotels.com  
www.olissippohotels.com

**HOTEL PORTUGAL**

Rua João das Regras, 4, Lisboa  
T. (+351) 218 842 120  
info@hotelportugal.com  
www.hotelportugal.com

**HOTEL PRAIA MAR**

Rua do Gurué, 16, Carcavelos  
T. (+351) 214 585 100  
praiaamar@almeidahotels.pt  
www.almeidahotels.pt/hotel-praia-mar

**HOTEL PRÍNCIPE REAL**

Rua da Alegria, 53, Lisboa  
T. (+351) 213 407 350  
geral@hotelprincipeareal.com  
www.belverhotels.com

**HOTEL TIVOLI ORIENTE**

Av. Dom João II, 27,  
Parque das Nações, Lisboa  
T. (+351) 218 915 100  
oriente@tivoli-hotels.com  
www.tivoloriente.com

**HOTEL TIVOLI SINTRA**

Praça da República, Sintra  
T. (+351) 219 237 200  
sintra@tivoli-hotels.com  
www.tivolisintra.com

**HOTEL TRYP LISBOA CAPARICA  
MAR BY WINDHAM**

Av. General Humberto Delgado,  
47, Costa da Caparica  
T. (+351) 212 918 900  
res.tlc@trypportugal.com  
www.tryplisboacaparica.com

**MELIA LISBOA ORIENTE**

Av. Dom João II, Lt. 1.16.02B, Lisboa  
T. (+351) 218 930 000  
res.mlo@meliaportugal.com  
www.melialisboaoriente.com

**HOTEL VILA GALÉ CASCAIS**

Rua Frei Nicolau de Oliveira, 80  
Parque da Gandarinha, Cascais  
T. (+351) 214 826 000  
cascais@vilagale.com  
www.vilagale.com

**HOTEL VILA GALÉ ESTORIL**

Av. Marginal – Apartado 49, Estoril  
T. (+351) 214 648 400  
estoril@vilagale.com  
www.vilagale.com

## ACCOMMODATION

### HOTEL VILA GALÉ ERICEIRA

Largo dos Navegantes, 1, Ericeira  
T. (+351) 261 869 900  
ericeira@vilagale.com  
www.vilagale.com

### HOTEL VILA GALÉ ÓPERA

Travessa do Conde da Ponte, Lisboa  
T. (+351) 213 605 400  
opera@vilagale.com  
www.vilagale.com

### HOTEL VINCCI BAIXA

Rua do Comércio, 32-38, Lisboa  
T. (+351) 218 803 190  
baixa@vincchoteles.com  
www.vincchoteles.com

### HOTEL YORK HOUSE LISBOA

Rua das Janelas Verdes, 32, Lisboa  
T. (+351) 213 962 435  
manager@yorkhouseslisboa.com  
www.yorkhouseslisboa.com

### HOTEL ZENIT LISBOA

Av. 5 de Outubro, 11, Lisboa  
T. (+351) 213 102 200  
dirislisboa@zenithoteles.com  
www.zenithoteles.com

### INSPIRA LIBERDADE BOUTIQUE HOTEL

Rua Santa Marta, 48, Lisboa  
T. (+351) 210 440 900  
reservas@inspirahotels.com  
www.inspirahotels.com

### INTERNACIONAL DESIGN HOTEL

Rua da Betesga, 3, Rossio, Lisboa  
T. (+351) 213 240 990  
info@idesignhotel.com  
www.idesignhotel.com

### JERÓNIMOS 8

Rua dos Jerónimos, 8, Lisboa  
T. (+351) 213 600 900  
jeronimos8@almeidahotels.pt  
www.jeronimos8.com

### LUX LISBOA PARK

Rua Padre António Vieira, 32-34, Lisboa  
T. (+351) 213 894 320  
lux.lisboa@luxhotels.pt  
www.lisboa.luxhotels.pt

### LEGENDARY LISBOA SUITES

Rua Rodrigo da Fonseca, 44-50, Lisboa  
T. (+351) 210 046 600  
legendarylisboasuites@  
continentalhotels.eu  
www.legendarylisboasuites.com

### LEZÍRIA PARQUE HOTEL

Av. Barranco de Cegos, 22,  
Vila Franca de Xira  
T. (+351) 263 276 670  
dir|ph@continentalhotels.eu  
www.continentalhotels.eu

### LISBOA MARRIOTT HOTEL

Av. dos Combatentes, 45, Lisboa  
T. (+351) 217 235 400  
lisbon@marrriotthotels.com  
www.lisbonmarrriott.com

### JÚPITER LISBOA HOTEL

Av. da República, 46, Lisboa  
T. (+351) 210 730 100  
info.lisboa@jupiterhoteis.com  
www.jupiterlisboahotel.com

### LUMEN HOTEL & THE LISBON LIGHT SHOW

Rua Sousa Martins, 20, Lisboa  
T. (+351) 210 547 410  
booking@lumenhotel.pt  
www.lumenhotel.pt

### LUTÉCIA SMART DESIGN HOTEL

Av. Frei Miguel Contreiras, 52, Lisboa  
T. (+351) 218 411 300  
info@luteciahotel.com  
www.luteciahotel.com

### LX BOUTIQUE HOTEL

Rua do Alecrim, 12, Lisboa  
T. (+351) 213 474 394  
goncalo.dias@lxboutiquehotel.com  
www.lxboutiquehotel.com

### MADALENA BY THE BEAUTIQUE HOTELS

Rua da Madalena, 271, Lisboa  
T. (+351) 210 537 006  
guestservice@thebeautiquehotels.com  
www.thebeautiquehotels.com/pt/  
madalena

### MELIA LISBOA AEROPORTO

Rua C, 2, Aeroporto Internacional  
de Lisboa  
T. (+351) 218 425 000  
res.mla@meliaportugal.com  
www.melialisboaaeroporto.com

### MERCURE LISBOA ALMADA

Rua Abel Salazar, 9, Pragal, Almada  
T. (+351) 212 761 401  
ha040@accor.com  
www.mercure.com

### MEMMO ALFAMA

Travessa das Merceeiras, 27, Lisboa  
T. (+351) 210 495 660  
alfama@memmohotels.com  
memmohotels.com

### NEYA LISBOA HOTEL

Rua Dona Estefânia, 71-77, Lisboa  
T. (+351) 213 101 800  
info@neyahotels.com  
www.neyahotels.com

### PESTANA CR7 LISBOA

Rua da Prata, 24-28, Lisboa  
T. (+351) 210 401 710  
fo.pestanacr7lisbon@pestana.com  
www.pestanacr7.com

### PESTANA SINTRA GOLF & SPA HOTEL

Rua Mato da Mina, 19, Sintra  
T. (+351) 210 424 300  
guest@pestana.com  
www.pestana.com

### PORTO BAY MARQUÊS

Rua Duque de Palmela, 32, Lisboa  
T. (+351) 210 402 000  
portobaymarques@portobay.pt  
www.portobay.com

### PRAIA DO SAL RESORT

Rua das Caravelas, 88, Alcochete  
T. (+351) 212 343 165  
geral@praiadosal.com  
www.praiadosal.com

### RADISSON BLU LISBOA

Av. Marechal Craveiro Lopes, 390, Lisboa  
T. (+351) 210 045 000  
rad@grupo-continental.com  
www.lisbon.radissonblu.com

### RAMADA BY WYNDHAM LISBON HOTEL

Av. Eng.º Arantes e Oliveira, 9, Lisboa  
T. (+351) 218 434 200  
reservations@olaiasparkhotel.com  
www.ramada.com



**EPIC SANA MARQUÊS**

Av. Fontes Pereira de Melo, 8, Lisboa  
 T. (+351) 212 468 688  
 reservations@sanahotels.com  
 T. (+351) 210 064 300  
 info.marques@epic.sanahotels.com  
 www.sanahotels.com

**SANA MALHOA**

Av. José Malhoa, 8, Lisboa  
 T. (+351) 212 468 688  
 reservations@sanahotels.com  
 T. (+351) 210 061 800  
 sanamalhoa@sanahotels.com  
 www.sanahotels.com

**SANA METROPOLITAN**

Rua Soeiro Pereira Gomes, 2, Lisboa  
 T. (+351) 212 468 688  
 reservations@sanahotels.com  
 T. (+351) 217 982 500  
 sanametropolitan@sanahotels.com  
 www.sanahotels.com

**SANA SESIMBRA HOTEL**

Av. 25 de Abril, Sesimbra  
 T. (+351) 212 468 688  
 reservations@sanahotels.com  
 T. (+351) 212 289 000  
 sanasesimbra@sanahotels.com  
 www.sanahotels.com

**SESIMBRA HOTEL & SPA**

Praça da Califórnia, Sesimbra  
 T. (+351) 212 289 800  
 info@sesimbrahotelspa.com  
 www.sesimbrahotelspa.com

**THE BEAUTIQUE HOTELS FIGUEIRA**

Praça da Figueira, 16, Lisboa  
 T. (+351) 210 492 940  
 reservations@thebeautiquehotels.com  
 www.thebeautiquehotels.com

**TURIM ALAMEDA HOTEL**

Av. Rovisco Pais, 34, Lisboa  
 T. (+351) 218 411 550  
 turimalamedahotel@turimhoteis.com  
 www.turimhoteis.com

**TURIM EUROPA HOTEL**

Rua S. Sebastião da Pedreira, 19, Lisboa  
 T. (+351) 210 330 800  
 turimeuropahotel@turimhoteis.com  
 www.turimhoteis.com

**TURIM IBERIA HOTEL**

Av. 5 de Outubro, 160, Lisboa  
 T. (+351) 217 906 110  
 turimiberiahotel@turimhoteis.com  
 www.turimhoteis.com

**TURIM LISBOA HOTEL**

Rua Filipe Folque, 20, Lisboa  
 T. (+351) 213 139 410  
 turimlisboahotel@turimhoteis.com  
 www.turimhoteis.com

**VIP EXECUTIVE ART'S**

Av. Dom João II, 47, Lisboa  
 T. (+351) 210 020 400  
 hotelarts@viphotels.com  
 www.viphotels.com

**VIP EXECUTIVE ÉDEN APARTHOTEL**

Praça dos Restauradores, 24, Lisboa  
 T. (+351) 213 216 600  
 isabelbeja@viphotels.com  
 www.viphotels.com

**VIP EXECUTIVE ENTRECAMPOS HOTEL & CONFERENCE**

Av. 5 de Outubro, 295 D, Lisboa  
 T. (+351) 210 043 046  
 hotelentrecampos@viphotels.com  
 www.viphotels.com

**VIP EXECUTIVE MARQUÊS APARTHOTEL**

Av. Duque de Loulé, 45, Lisboa  
 T. (+351) 213 510 480  
 suitesdomarques@viphotels.com  
 www.viphotels.com

**VIP EXECUTIVE PICOAS HOTEL**

Rua Filipe Folque, 12, Lisboa  
 T. (+351) 210 513 200  
 hotelpicoas@viphotels.com  
 www.viphotels.com

**VIP EXECUTIVE SALDANHA**

Rua Fernão Lopes, 25, Lisboa  
 T. (+351) 213 308 620  
 hotelsaldanha@viphotels.com  
 www.viphotels.com

**VIP EXECUTIVE SANTA IRIA**

Estrada Nacional 10, 1260, Santa Iria da Azóia  
 T. (+351) 210 032 300  
 hotelsantairia@viphotels.com  
 www.viphotels.com

**WC BY THE BEAUTIQUE HOTELS**

Av. Almirante Reis, 35, Lisboa  
 T. (+351) 210 537 001  
 guestservice@thebeautiquehotels.com  
 https://www.thebeautiquehotels.com/pt/wc/

★★★

**AMAZÓNIA LISBOA HOTEL**

Travessa Fábrica dos Pentes, 12-20, Lisboa  
 T. (+351) 211 147 831  
 reclisboa@amazoniahoteis.com  
 www.amazoniahoteis.com

**AMERICA DIAMOND'S HOTEL**

Rua Tomás Ribeiro, 47, Lisboa  
 T. (+351) 213 521 177  
 info@americadiamondshotel.com  
 www.americadiamondshotel.com

**ARRIBAS SINTRA HOTEL**

Av. Alfredo Coelho, 28, Praia Grande, Sintra  
 T. (+351) 219 289 050  
 mail@hotelarribas.pt  
 www.arribashotel.com

**CASA DE SÃO MAMEDE HOTEL**

Rua da Escola Politécnica, 159, Lisboa  
 T. (+351) 213 963 166  
 casasaomamedehotel@gmail.com  
 www.casasaomamede.pt

**DOM CARLOS LIBERTY HOTEL**

Rua Alexandre Herculano, 13, Lisboa  
 T. (+351) 213 173 570  
 comercial@domcarloshoteis.com  
 www.domcarloshoteis.com

**DOM CARLOS PARK HOTEL**

Av. Duque de Loulé, 121, Lisboa  
 T. (+351) 213 512 590  
 reservas@domcarloshoteis.com  
 www.domcarloshoteis.com

**HF FÉNIX GARDEN**

Rua Joaquim António de Aguiar, 3, Lisboa  
 T. (+351) 213 717 120  
 booking.garden@hfhoteis.com  
 www.hfhoteis.com

**HF FÉNIX MUSIC**

Rua Joaquim António de Aguiar, 5, Lisboa  
 T. (+351) 210 496 570  
 booking.music@hfhoteis.com  
 www.hfhoteis.com

## ACCOMMODATION

### **HOLIDAY INN EXPRESS LISBON – AEROPORTO**

Rua da Guiné, Prior Velho  
T. (+351) 210 080 800  
hielisbonairport@realhotelsgroup.com  
www.hiexpress.com

### **HOTEL HOLIDAY INN EXPRESS LISBON – OIRAS**

Av. Dom Félix Niza Ribeiro, Porto Salvo  
T. (+351) 214 232 040  
expresshilo@grupo-continental.com  
www.hiexpress.com/lisbonoiras

### **HOLIDAY INN EXPRESS LISBON PLAZA SALDANHA**

Av. João Crisóstomo, 40, Lisboa  
T. (+351) 211 515 900  
hielisbonsaldanha@realhotelsgroup.com  
www.hiexpress.com/lisbon-ps

### **HOTEL A. S. LISBOA**

Av. Almirante Reis, 188, Lisboa  
T. (+351) 218 429 360  
info@hotel-aslisboa.pt  
www.hotel-aslisboa.com

### **HOTEL ALVORADA**

Rua de Lisboa, 3, Estoril  
T. (+351) 214 649 860  
geral@hotelalvorada.com  
www.hotelalvorada.com

### **HOTEL AVENIDA PARK**

Av. Sidónio Pais, 6, Lisboa  
T. (+351) 213 532 181  
info@avenidapark.com  
www.avenidapark.com

### **HOTEL BORGES**

Rua Garrett, 108, Lisboa  
T. (+351) 213 461 951  
info@hotelborges.com  
www.hotelborges.com

### **HOTEL EXCELSIOR**

Rua Rodrigues Sampaio, 172, Lisboa  
T. (+351) 213 537 151  
hotelexcelsior3@hotmail.com  
www.hotel-excelsior.pt

### **HOTEL EXPO ASTÓRIA**

Rua Braamcamp, 10, Lisboa  
T. (+351) 213 861 317  
astoria@expoastoria.pt  
www.expoastoria.pt

### **HOTEL FLAMINGO**

Rua Castilho, 41, Lisboa  
T. (+351) 213 841 200  
geral@hotelflamingo.pt  
www.hotelflamingo.pt  
50

### **HOTEL HOLIDAY INN EXPRESS LISBON-ALFRAGIDE**

Rua Quinta do Paizinho, 11, Carnaxide  
T. (+351) 214 009 200  
hielisbonalfragide@realhotelsgroup.com  
www.hielisboaalfragide.pt

### **HOTEL IBIS PARQUE DAS NAÇÕES**

Rua do Mar Vermelho, Lote 1.07.2.2, Lisboa  
T. (+351) 210 730 470  
h8501@accor.com  
www.ibis.com

### **HOTEL LIDO**

Rua do Alentejo, 12, Estoril  
T. (+351) 214 679 420  
lido@hotellido.pt  
www.hotellido.pt

### **HOTEL MÉTROPOLE**

Praça Dom Pedro IV, 30, Lisboa  
T. (+351) 213 219 030  
metropole@almeidahotels.pt  
www.almeidahotels.com

### **HOTEL MIRAPARQUE**

Av. Sidónio Pais, 12, Lisboa  
T. (+351) 213 524 286  
hotel@miraparque.com  
www.miraparque.com

### **HOTEL NACIONAL**

Rua Castilho, 34, Lisboa  
T. (+351) 213 554 433  
geral@hotel-nacional.com  
www.hotel-nacional.com

### **HOTEL PRÍNCIPE LISBOA**

Av. Duque de Ávila, 201, Lisboa  
T. (+351) 213 592 050  
hotel@hotelprincipelisboa.com  
www.hotelprincipelisboa.com

### **HOTEL ROMA**

Av. de Roma, 33, Lisboa  
T. (+351) 217 932 244  
info@hotelroma.pt | www.hotelroma.pt

### **HOTEL STAR INN LISBON**

Rua C – Edifício 125  
Aeroporto Internacional de Lisboa  
T. (+351) 218 425 700  
reservas.lisbon@hotelstarinn.com  
www.hotelstarinn.com

### **HOTEL TRAVEL PARK LISBOA**

Av. Almirante Reis, 64, Lisboa  
T. (+351) 218 102 100  
reservas@hoteltravelpark.com  
www.hoteltravelpark.com

### **IBIS STYLES LISBOA CENTRO MARQUÊS DE POMBAL**

Av. Fontes Pereira de Melo, 5, Lisboa  
T. (+351) 213 568 800  
HA9R8@accor.com  
www.ibis.com

### **LISBOA CENTRAL PARK**

Av. Sidónio Pais, 4, Lisboa  
T. (+351) 213 502 060  
info@lcpark.com  
www.lcpark.com

### **MAMA LISBOA**

Rua Alexandre Herculano, 51, Lisboa  
T. (+351) 210 549 899  
lisboa@mamashelter.com  
www.mamashelter.com

### **MASA HOTEL ALMIRANTE**

Av. Almirante Reis, 68, Lisboa  
T. (+351) 210 193 750  
comercial@masahotel.com  
www.masahotel.com

### **MAXIME HOTEL**

Praça da Alegria, 58, Lisboa  
T. (+351) 218 716 600  
mxh@realhotelsgroup.com  
www.maximehotellisbon.com

### **MOXY LISBOA ORIENTE**

Av. Aquilino Ribeiro Machado, 10, Lisboa  
T. (+351) 210 488 350  
moxyoriente@hotihoteis.com  
www.moxylisboaoriente.com

### **MY STORY HOTEL CHARMING AUGUSTA**

Rua São Nicolau, 78, Lisboa  
T. (+351) 211 147 899  
guestservice@mystoryhotels.com  
www.mystoryhotels.com

### **MY STORY HOTEL OURO**

Rua Áurea, 100, Lisboa  
T. (+351) 213 400 380  
guestservice@mystoryhotels.com  
www.mystoryhotels.com

### **MY STORY HOTEL ROSSIO**

Praça Dom Pedro IV, 59, Lisboa  
T. (+351) 213 400 380  
guestservice@mystoryhotels.com  
www.mystoryhotels.com

**MY STORY HOTEL TEJO**

Rua dos Condes de Monsanto, 2, Lisboa  
T. (+351) 218 866 182  
guestservice@mystoryhotels.com  
www.mystoryhotels.com

**SANA CAPITOL HOTEL**

Rua Eça de Queiroz, 24, Lisboa  
T. (+351) 212 468 688  
reservations@sanahotels.com  
T. (+351) 213 536 811  
sanacapitol@sanahotels.com  
www.sanahotels.com

**SANA RENO HOTEL**

Av. Duque D'Ávila, 195-197, Lisboa  
T. (+351) 212 468 688  
reservations@sanahotels.com  
T. (+351) 213 135 000  
sanareno@sanahotels.com

**SANA REX HOTEL**

Rua Castilho, 169, Lisboa  
T. (+351) 212 468 688  
reservations@sanahotels.com  
T. (+351) 213 882 161  
sanarex@sanahotels.com  
www.sanahotels.com

**TURIM RESTAURADORES HOTEL**

Rua da Glória, 9, Lisboa  
T. (+351) 213 400 270  
turimrestauradoreshotel@  
turimhoteis.com  
www.turimhoteis.com

**VIP EXECUTIVE BERNA**

Av. António Serpa, 13, Lisboa  
T. (+351) 217 814 300  
hotelberna@viphotels.com  
www.viphotels.com

**VIP EXECUTIVE ZURIQUE**

Rua Ivone Silva, 18, Lisboa  
T. (+351) 217 814 000  
hotelzurique@viphotels.com  
www.viphotels.com

**OTHER HOTELS****HOTEL ALEGRIA**

Closed for works  
Praça de Alegria, 12, Lisboa  
T. (+351) 213 220 670  
mail@alegrianet.com

**HOTEL D. SANCHO I**

Av. da Liberdade, 202, Lisboa  
T. (+351) 213 513 160  
info@domsancho.com  
www.domsancho.com

**HOTEL CARAVELA**

Rua Ferreira Lapa, 38, Lisboa  
T. (+351) 213 539 011  
residencial\_caravela@sapo.pt  
www.hotelcaravela.pt

**HOTEL DOM AFONSO HENRIQUES**

Rua Cristóvão Falcão, 8, Lisboa  
T. (+351) 218 117 010  
reservas@hoteldah.com  
www.hoteldah.com

**HOTEL DUAS NAÇÕES**

Rua da Vitória, 41, Lisboa  
T. (+351) 213 460 710  
info@duasnacoes.com  
www.duasnacoes.com

**HOTEL DUBLIN**

Rua de Santa Marta, 45, Lisboa  
T. (+351) 213 555 489  
infodublin@residencialdublin.com  
www.residencialdublin.com

**HOTEL GAT ROSSIO**

Rua Jardim do Regedor, 27-35, Lisboa  
T. (+351) 213 478 300  
hotelgatrossio@gatrooms.com  
www.gatrooms.com

**HOTEL IBIS LISBOA ALFRAGIDE**

Alto Cabreira, Estrada Circunvalação,  
Amadora  
T. (+351) 217 625 090  
h5270@accor.com  
www.ibishotel.com

**HOTEL IBIS LISBOA JOSÉ MALHOA**

Av. José Malhoa, Lt. H, Lisboa  
T. (+351) 217 235 700  
h1668@accor.com  
www.accorhotels.com

**HOTEL IBIS LISBOA LIBERDADE**

Rua Barata Salgueiro, 53, Lisboa  
T. (+351) 213 300 630  
h3137-gm@accor.com  
www.accorhotels.com

**HOTEL IBIS LISBOA SALDANHA**

Av. Casal Ribeiro, 23, Lisboa  
T. (+351) 213 191 690  
h2117@accor.com  
www.accorhotels.com

**HOTEL INN ROSSIO**

Rua 1.º de Dezembro, 73, Lisboa  
T. (+351) 213 474 976  
info@hotelamericano.com  
www.hotelamericano.com

**HOTEL LX ROSSIO**

Rua da Assunção, 52, Lisboa  
T. (+351) 213 423 131  
info@insulana.net  
www.insulana.net

**HOTEL PORTUENSE**

Rua das Portas de Santo Antão,  
149-157, Lisboa  
T. (+351) 213 464 197  
info@hotelportuense.com  
www.hotelportuense.com

**LUXE HOTEL BY TURIM HOTÉIS**

Rua Passos Manuel, 28, Lisboa  
T. (+351) 213 182 010  
luxehotel@turimhoteis.com  
www.turimhoteis.com

**SÃO PEDRO LISBON HOTEL**

Rua Pascoal de Melo, 130, Lisboa  
T. (+351) 213 578 765  
rsao.pedro@gmail.com  
www.saopedrolisbonhotel.com

**APARTHOTELS****ALDEIA DOS CAPUCHOS**

**HOTEL, GOLF & SPA \*\*\*\***  
Largo Aldeia dos Capuchos, Caparica  
T. (+351) 212 909 000  
geral@aldeiadoscapuchos.pt  
www.aldeiadoscapuchos.pt

**ALTIS PRIME \*\*\*\***

Rua Rodrigo da Fonseca, 4, Lisboa  
T. (+351) 210 456 000  
reservations@altishotels.com  
www.altishotels.com

**ALTIS SUITES \*\*\*\***

Rua Castilho, 13, Lisboa  
T. (+351) 210 456 101  
reservations@altishotels.com  
www.altishotels.com

**HOTEL PESTANA CASCAIS \*\*\*\***

Av. Manuel Júlio Carvalho e Costa,  
115, Guia, Cascais  
T. (+351) 214 825 900  
reception.cascais@pestana.com  
www.pestana.com

## ACCOMMODATION

### REAL RESIDÊNCIA \*\*\*\*

Rua Ramalho Ortigão, 41, Lisboa  
T. (+351) 213 822 900  
book.lis@realhotelsgroup.com  
realhotelsgroup.com/pt-pt/hotel/real-  
-residencia/

### SHERATON CASCAIS RESORT \*\*\*\*\*

Rua das Palmeiras, Lote 5  
Quinta da Marinha, Cascais  
T. (+351) 214 829 100  
info@sheratoncascais.com  
www.sheratoncascais.com

## "POUSADAS"

### POUSADA DE CASCAIS - CIDADELA

Cidadela de Cascais, Avenida Dom  
Carlos I, Cascais  
T. (+351) 214 814 300  
guest@pousadas.pt  
www.pousadas.pt

### POUSADA DE LISBOA - PRAÇA DO COMÉRCIO

Praça do Comércio, 31-34, Lisboa  
T. (+351) 210 407 640  
reception.pousadalisboa@pestanana.  
com  
www.pousadas.pt

### POUSADA DO CASTELO DE PALMELA

Castelo de Palmela, Palmela  
T. (+351) 212 351 226  
rececao.palmela@pousadas.pt  
www.pousadas.pt

### POUSADA PALÁCIO DE QUELUZ HISTORIC HOTEL

Largo do Palácio Nacional, Queluz  
T. (+351) 214 356 158  
guest@pousadas.pt  
www.pousadas.pt

## OTHER

### AS JANELAS VERDES \*\*\*\*

Rua das Janelas Verdes, 47, Lisboa  
T. (+351) 213 968 143  
jverdes@heritage.pt  
www.heritage.pt

### MARTINHAL CHIADO FAMILY SUITES\*\*\*\*\*

Rua das Flores, 44, Lisboa  
info@martinhal.com  
www.martinhal.com

### PALACETE CHAFARIZ D'EL REY

Travessa Chafariz D'el Rey, 6, Lisboa  
T. (+351) 218 886 150  
hotel.chafarizdelrei@unlockhotels.com  
www.chafarizdelrei.com

### SOLAR DO CASTELO \*\*\*\*

Rua das Cozinhas, 2, (Castelo), Lisboa  
T. (+351) 218 870 909  
solar.castelo@heritage.pt  
www.heritage.pt

### UPON LISBON PRIME RESIDENCES

Rua Luciana Stegagno Picchio, 12;  
Urbanização Benfica Stadium, Lisboa  
T. (+351) 211 549 640  
reservas@uponlisbon.com  
www.uponlisbon.com

### VILLA ALBATROZ \*\*\*\*\*

Rua Fernandes Tomás, 1, Cascais  
T. (+351) 214 863 410  
info@villacascais.com  
www.albatrozhotels.com

### YOU AND THE SEA

Rua das Silvas, Ericeira  
T. (+351) 261 243 370  
info@youandthesea.pt  
www.youandthesea.pt

## CAMPING

### LISBOA CAMPING & BUNGALOWS

Estrada Circunvalação, Lisboa  
T. (+351) 217 628 200  
info@lisboacamping.com  
www.lisboacamping.com

### ORBITUR COSTA DA CAPARICA

Av. Afonso de Albuquerque,  
Quinta de Santo António,  
Costa da Caparica  
T. (+351) 212 901 366  
infocaparica@orbitur.pt  
www.orbitur.com

### ORBITUR GUINCHO

Lugar de Areia, EN 247, 6, Cascais  
T. (+351) 214 870 450  
infoguincho@orbitur.pt  
www.orbitur.com

## LOCAL ACCOMMODATION

### AZEITÃO ZEN – A CASA DA AREIA

Rua São João de Brito, Lote 110,  
Brejos de Azeitão  
T. (+351) 963 972 387  
azeitaozen@gmail.com  
azeitaozen.pt

### LISBON ART STAY

Rua dos Sapateiros, 158, Lisboa  
T. (+351) 211 931 646  
info@lisbonartstay.com  
www.lisbonartstay.com

### MY SUITE LISBON

Rua São Boaventura, 23, Lisboa  
T. (+351) 917 238 643  
mslreservations@phchotels.pt  
phchotels.pt

### ONCE UPON A HOUSE IN ARRÁBIDA

EN 10 KM 33,5, Setúbal  
T. (+351) 968 040 408  
www.ouh.pt

### QUINTA DO TAGUS

Quinta do Tagus, Costas de Cão,  
Monte da Caparica  
T. (+351) 212 954 359  
quintadotagusvillage@gmail.com  
www.quintadotagus.com

### QUINTA DOS MACHADOS

#### - NATURE, LOVE & RELAX

Estrada Nacional 8, Barras,  
Gradil - Mafra  
T. (+351) 261 961 279  
quintamachados@quintamachados.com  
www.quintamachados.com

### SELINA SECRET GARDEN LISBOA

Beco do Carrasco, 1, Lisboa  
T. (+351) 914 489 014  
carlam@selina.com  
www.selina.com

### TERRA LUSO

Rua das Flores, 50, Rochaforte,  
Cadaval  
T. (+351) 915 398 498  
terra.luso@gmail.com  
www.terra-luso.com

### TOREL PALACE LISBON

Rua Câmara Pestana, 23, Lisboa  
T. (+351) 218 290 810  
info@torelpalacelisbon.com  
www.torelpalacelisbon.com

## GUEST HOUSES

**ALECRIM AO CHIADO**

Rua do Alecrim, 73, Lisboa  
T. (+351) 213 460 979  
jng@ouh.pt  
www.ouh.pt

**CASA DO BAIRRO**

Beco do Caldeira, 1, Lisboa  
T. (+351) 914 176 969  
info@shiadu.com  
www.shiadu.com

**CASINHA DA BOA HORA**

Travessa da Boa Hora, 34, 4.º, Lisboa  
T. (+351) 930 480 337  
geral@casinhasdeportugal.com  
www.casinhasdeportugal.com

**CASINHA DAS FLORES**

Rua das Flores, 105, 3.º Dto., Lisboa  
T. (+351) 930 480 337  
geral@casinhasdeportugal.com  
www.casinhasdeportugal.com

**CASINHA DOS SAPATEIROS**

Rua dos Sapateiros, 44, Lisboa  
T. (+351) 930 480 337  
geral@casinhasdeportugal.com  
www.casinhasdeportugal.com

**ESPAÇO EDLA**

Rua Dr. Alfredo da Costa, 52, Sintra  
T. (+351) 925 970 131  
espacoedlasintra@gmail.com  
www.espacoedla.pt

**FAMOUS CROWS GUESTHOUSE**

Rua de Belém, 70, 1.º e 2.º, Lisboa  
T. (+351) 939 890 903 / 960 169 831  
geral@famous-crows.pt  
www.famous-crows.pt

**MY CHARM LISBON SUITES**

Av. Almirante Reis, 106, 3.º Frt, Lisboa  
T. (+351) 915 420 547  
geral@mycharmlisbon.com  
www.mycharmlisbon.com/pt/  
Homepage.aspx

**PALÁCIO DAS ESPECIARIAS GUESTHOUSE**

Rua da Horta Seca, 11, Lisboa  
T. (+351) 930 480 337  
geral@casinhasdeportugal.com  
www.casinhasdeportugal.com

**RM GUEST HOUSE**

Av. Luísa Tody  
Rua Padre Silvestre Serrão, 8, Setúbal  
T. (+351) 265 400 119  
info@rmguesthouse.pt  
www.rmguesthouse.pt

**UNIVERSO ROMÂNTICO GUESTHOUSE & SPA**

Rua Luciano Cordeiro, 72, Lisboa  
T. (+351) 213 520 884  
romantico.lisboa@gmail.com  
www.universoromantico.com

**WALLIS RATO**

Av. Álvares Cabral, 3, 6.º, Lisboa  
T. (+351) 969 193 627  
info@wallis.pt  
www.wallisholidays.pt

## HOSTELS

**BE LISBON HOSTEL INTENDENTE**

Rua dos Anjos, 1F, Lisboa  
T. (+351) 937 526 654  
intendente@belisbonhostel.pt  
www.belisbonhostel.pt

**GOLDEN TRAM 242 LISBONNE HOSTEL**

Rua Áurea, 242, Lisboa  
T. (+351) 213 229 100  
goldentram242.lisbonnehostel@gmail.com  
www.goldentram242lisbonnehostel.com

**LISBOA CENTRAL HOSTEL**

Rua Rodrigues Sampaio, 160, Lisboa  
T. (+351) 309 881 038  
bookings@lisboacentralhostel.com  
www.lisboacentralhostel.com

**LISBON CHILLOUT HOSTEL**

Rua Nogueira e Sousa, 8, 1.º, Lisboa  
T. (+351) 212 468 450  
lisbonchh@hotmail.com  
www.lisbonchillouthostel.com

**LISBON LOUNGE HOSTEL**

Rua de São Nicolau, 41, 1.º, Lisboa  
T. (+351) 213 462 061  
info@lisbonloungehostel.com  
www.lisbonloungehostel.com

**LISB'ON HOSTEL**

Rua do Ataíde, 7A, Lisboa  
T. (+351) 213 467 413  
info@lisb-onhostel.com  
www.lisb-onhostel.com

**LIVING LOUNGE HOSTEL**

Rua do Crucifixo, 116, 2.º, 3.º, 4.º, Lisboa  
T. (+351) 213 461 078  
info@livingloungehostel.com  
www.livingloungehostel.com

**LOST INN LISBON HOSTEL**

Beco dos Apóstolos, 6, Lisboa  
T. (+351) 213 470 755  
info@lostinnlisbon.com  
www.lostinnlisbon.com

**ROSSIO HOSTEL**

Calçada do Carmo, 6, 2.º Dto., Lisboa  
T. (+351) 213 426 004  
rossiohostel@hotmail.com  
www.rossiohostel.com

**THE INDEPENDENTE HOSTEL & SUITES**

Rua de São Pedro de Alcântara, 81, Lisboa  
T. (+351) 213 461 381  
reservations@theindependente.pt  
www.theindependente.pt

## APARTMENTS

**ALFAMA APARTMENT SERVICES**

Rua Terreiro do Trigo, 92, Lisboa  
T. (+351) 210 532 846  
alfama.apartment.services@gmail.com

**ALFAMA'S NEST**

Av. Infante Dom Henrique, 311, sala 1, Lisboa  
T. (+351) 211 935 541  
apoio@embracetime.pt  
www.embracetime.pt

**ALMARIA EDIFÍCIO DA CORTE**

Rua Ferragial, 11, Lisboa  
T. (+351) 914 079 495  
reservations@almaria.pt  
www.almaria.pt

**ALMARIA EDIFÍCIO EX LIBRIS**

Rua da Misericórdia, 137, Lisboa  
T. (+351) 914 079 495  
reservations@almaria.pt  
www.almaria.pt

**ALMARIA EDIFÍCIO OFFICINA REAL**

Rua do Loreto, 58, Lisboa  
T. (+351) 914 079 495  
reservations@almaria.pt  
www.almaria.pt

**BAIXA HOUSE**

Rua dos Fanqueiros, 81 BH, Lisboa  
T. (+351) 919 090 895  
reservas@baixahouse.com  
www.baixahouse.com

**BE GUEST – HOLIDAY RENTALS**

Praça D. Manuel I, Lj. 4 A, Lisboa  
T. (+351) 214 070 486  
reservations@beguest.pt  
www.beguest.pt

**BMYGUEST - SHORT TERM RENTAL**

Av. da República, 45, 6.º, Esc.3, Lisboa  
T. (+351) 217 960 326  
geral@bmyguest.pt  
www.bmyguest.pt

**CHIADO APARTAMENTS**

Rua das Salgadeiras, 5, Lisboa  
T. (+351) 213 955 382  
bookings@ptrentals.com  
www.chiado-apartments.com

**CITY STAYS APARTMENTS**

Praça Duque da Terceira, 11, Lisboa  
T. (+351) 912 849 320  
customerservice@city-stays.pt  
www.city-stays.pt

**EMPORIUM LISBON SUITES**

Rua dos Bacalhoeiros, 18, Lisboa  
T. (351) 926 674 391  
programa.citadino@gmail.com  
www.emporiumlisbonsuites.com

**LE PREMIER LISBON SUITES**

Av. Miguel Bombarda, 50, 2.º, Lisboa  
T. (+351) 910 230 269  
info@lepremierlisbonsuites.com  
www.lepremierlisbonsuites.com

**FADOFLOTS**

Travessa João de Deus, 12,  
Lisboa  
T. (+351) 213 432 364  
fadoflats@fadoflats.pt  
www.fadoflats.pt

**GARVETUR**

Av. Dom João II  
Edifício Panoramic, lote 1.19.03, 19 G  
Parque das Nações  
T. (+351) 213018 166  
lisboa@garvetur.pt  
www.garvetur.pt

**HOMING**

Largo do Rato, 7 A/B, Lisboa  
T. (+351) 211 578 349  
info@homing.com.pt  
www.homing.com.pt

**LE FLAT**

Azinhaga da Fonte, 17, Lisboa  
T. (+351) 916 288 292  
info@leflat.pt  
www.leflat.pt

**LISBON BEST APARTMENTS**

Rua da Trindade, 5, 1.º Dto., Lisboa  
T. (+351) 213 108 900  
reservations@lisbonbestapartments.com  
www.lisbonbestapartments.com

**LISBON FIVE STARS**

Rua da Moeda, 4, Lisboa  
T. (+351) 920 350 999  
reservations@lisbonfivestars.pt  
www.lisbonfivestars.pt

**LV PREMIER APARTMENTS & VILLAS**

Rua do Carmo, 43, 3C, Lisboa  
T. (+351) 211 335 743 /  
911 039 463 / 938 210 212  
book@lvpremier.com  
www.lvpremier.com

**O QUINTO ESQUERDO**

Av. Defensores de Chaves, 23,  
5.º Esq./Dto., Lisboa  
T. (+351) 918 019 421  
oquintoesquerdo@gmail.com

**PANORAMICLIVING**

Av. Dom João II, 53, Loja A, Lisboa  
T. (+351) 218 515 314  
info@panoramicliving.pt  
www.panoramicliving.pt

**RESIDENCIAL LAR DO AREIRO**

Praça Francisco Sá Carneiro, 4, Lisboa  
T. (+351) 218 493 150  
info@residencialardoareiro.com  
www.residencialardoareiro.com

**THE BLUE HOUSE LISBOA**

Rua da Bica de Duarte Belo, 10, Lisboa  
T. (+351) 211 333 606  
thebluehouselisboa@gmail.com  
www.thebluehouselisboa.com

**TRAVELLING TO LISBON**

Av. 24 de Julho, 4 B, Armazém 6,  
Lisboa  
T. (+351) 218 886 072  
ttl@travellingtolisbon.com  
www.travellingtolisbon.com

**YOUR LISBON FLAT**

Rua Manuel Bernardes, 3, 1.º Dto., Lisboa  
T. (+351) 915 895 015  
reservations@yourlisbonflat.com  
www.yourlisbonflat.com

**OTHER LOCAL ACCOMMODATION****RESIDENCIAL DOM JOÃO**

Rua José Estevão, 43, Lisboa  
T. (+351) 213 140 422  
reservas.residencialdomjoao@gmail.com  
www.domjoao lisboa.com

**RESIDENCIAL HORIZONTE**

Av. António Augusto Aguiar, 42, Lisboa  
T. (+351) 213 539 526  
residehorizonte@netcabo.pt  
www.hotelhorizonte.com

**LUGGAGE STORAGE****BOUNCE**

Rua de São Bento, 35, Lisboa  
T. (+351) 933 052 805  
office@usebounce.com  
https://usebounce.com/city/lisbon

**LISBON SHOP 2**

**Temporarily closed**  
Rua Jardim do Regedor, 50, Lisboa  
T. (+351) 910 518 030  
regedor@lismarketing.pt  
www.visitlisboa.com

**LUGAGGE @ CITY CENTER**

Rua da Misericórdia, 14, Loja 27, Lisboa  
 T. (+351) 213 470 585 /  
 962 330 645  
 henry@luggageatcitycenter.com  
 www.luggageatcitycenter.com

**LUGGAGE STORAGE LISBON**

Rua do Alecrim, 26, R/C, Lisboa  
 T. (+351) 213 471 458  
 info@luggagestoragelisbon.com  
 www.luggagestoragelisbon.com

**BY BUS**

**BARRAQUEIRO TRANSPORTES**

Av. Santos e Castro, Lisboa  
 T. (+351) 217 511 600  
 rodest@rodest.pt  
 www.barraqueirotransportes.pt

**CARRISTUR**

**LISBOA CARD PARTNER**

Open-top double-decker buses and antique trams, accompanied by multilingual commentary. Daily.  
 T. (+351) 213 613 193  
 geral@carristur.pt  
 www.carristur.pt

**REDE NACIONAL DE EXPRESSOS**

Praça Marechal Humberto Delgado, Estrada das Laranjeiras, Lisboa  
 T. (+351) 213 581 472  
 financeira@rne.pt  
 www.rede-expressos.pt

**OUTSIDE LISBOA**

**SCOTTURB**

Rua de São Francisco, 660, Adroana, Alcabideche, Cascais  
 T. (+351) 214 699 100  
 scotturb@scotturb.com  
 www.scotturb.com

**BY TRAIN**

**FERTAGUS**

**LISBOA CARD PARTNER**

Estação do Pragal, porta 23, Almada  
 T. (+351) 211 066 302  
 fertagus@fertagus.pt  
 www.fertagus.pt

**TRANSPORT WITH DRIVER**

**AMIROAD – LUXURY TRANSPORTS**

Rua Professor Abel Salazar, Lote 7, São João Talha  
 T. (+351) 914 075 830  
 amiroad@amiroad.pt  
 www.amiroad.pt

**BEDRIVEN**

Av. Severiano Falcão, 3, Prior Velho  
 T. (+351) 220 102 268  
 reservas@choicocar.pt  
 www.bedriven.pt

**CAR2U**

Rua Eng. Nobre Guedes 19, 6.º Esq., Lisboa  
 T. (+351) 938 143 583  
 rp@car2u.pt  
 www.car2u.pt

**COIMBRA AIRPORT SHUTTLE**

Parque Industrial de Taveiro, lote 8, Taveiro  
 T. (+351) 304 505 304  
 coimbra@airportshuttle.pt  
 www.airportshuttle.pt

**FREDBUS**

Estrada da Circunvalação, Lote 15A, Loja 2, Lisboa  
 T. (+351) 213 879 302  
 fredauto@fredauto.com  
 www.fredauto.com

**GOLD COMPASS**

Rua de Entrecampos, 30A, Lisboa  
 T. (+351) 910 275 640  
 bookings@goldcompass.pt  
 www.goldcompass.pt

**GOLD LIMOUSINE**

Av. Almeida Garrett, 4, Alfragide  
 T. (+351) 919 398 004  
 info@goldlimousine.pt  
 www.goldlimousine.pt

**JETLIMO**

Rua Eng.º Manuel Rocha, Edif. Brasil, Loja 6, Lisboa  
 T. (+351) 218 459 370  
 mail@jetlimo.pt  
 www.jetlimo.pt

**LIMOUSINES.PT**

Rua de São Domingos à Lapa, 101, Lisboa  
 geral@limousines.pt  
 www.limousines.pt

**LIMOUTRAVEL CHAUFFER SERVICE**

Rua Dom João II, 20, 1.º, Queluz de Baixo  
 T. (+351) 967 001 700  
 limoutravel@gmail.com  
 www.limoutravel.com

**LISBON FANCYTOUR**

Rua Cipriano dos Santos, 5, Sintra  
 T. (+351) 964 829 610  
 info@lisbonfancytour.pt  
 www.lisbonfancytour.pt

**LUGGIT**

Luggage transfers.  
 hello@luggit.app  
 luggit.app

**PRIVATELANE**

Quinta da Bela Vista, 7B, R/C, Frielas  
 T. (+351) 915 224 064  
 info@privatelane.pt  
 www.privatelane.pt

**SPECIALIMO TRAVEL GROUP**

Azinhaga dos Lameiros, 15, Armazém 3A, Lisboa  
 T. (+351) 217 552 861  
 info@specialimo.com  
 www.specialimo.com

**SMARTBUS**

Rua José Travassos, 15 B, Lj 1600-410, Lisboa  
 T. (+351) 919 598 010  
 geral@smartbus.pt  
 www.smartbus.pt

**TEMPO VIP - VOLTARUS**

Rua do Açúcar, 76, Armazém 8, Lisboa  
 T. (+351) 918 328 179  
 geral@tempovip.com  
 www.tempovip.com

**TETRA RÁPIDO**

Rua Leite de Vasconcelos, 72B, Lisboa  
T. (+351) 962 613 065  
tetrapido@gmail.com

**TOUR-LINE**

Rua Martin Luther King, 5C, Lisboa  
T. (+351) 933 658 491  
geral@tour-line.pt  
www.tour-line.pt

**RENT A CAR****AVIS BUDGET GROUP EMEA**

Av. Severiano Falcão, 9,  
Prior Velho  
T. (+351) 217 547 800  
marketing@avis-portugal.pt  
www.avis.com.pt

**CAEL**

Rua Braamcamp, 52A, Lisboa  
T. (+351) 213 839 700  
rentacar@cael.pt  
www.cael.pt

**CAMPERLINE**

Rua Maria Matos, Edifício Iglésias,  
São Domingos de Rana  
T. (+351) 214 453 333  
camperline@camperline.pt  
www.camperline.pt

**HARLEY-DAVIDSON LISBOA**

Rua Vítor Hugo, 16F, Lisboa  
T. (+351) 219 156 790  
comercial@hdlisboa.com  
www.hdlisboa.com

**HERTZ**

Av. Severiano Falcão, 7-7A,  
Prior Velho  
T. (+351) 219 426 300  
reservas@hertz.pt  
www.hertz.pt

**OLIVAUTO**

Av. São João de Deus, 37A, Lisboa  
T. (+351) 218 414 000  
geral@olivauto.pt  
www.olivauto.pt

**PORTUGALRENT**

Rua Professor Moisés Amzalak, 4,  
A/B/C, Lisboa  
T. (+351) 217 169 388  
reservas@portugalrent.com  
www.portugalrent.com

**SIXT RENT-A-CAR**

Av. Severiano Falcão, Lote 2, Fracção C  
Edifício Ambiente, Prior Velho  
reservations@sixt.pt  
www.sixt.pt

**VERMATIS**

Av. do Brasil, 92 C, Lisboa  
T. (+351) 938 388 844  
vermatis.lisbon@gmail.com  
vermatis.negócio.site

**OTHERS****BIKEIBERIA**

Largo do Corpo Santo, 5, Lisboa  
T. (+351) 213 470 347/969 630 369  
info@bikeiberia.com  
www.bikeiberia.com

**COOLTRA**

Rua da Madalena, 216, Lisboa  
T. (+351) 912 524 241  
info@cooltra.com  
www.cooltra.com

**LISBON POINT**

Rua dos Bacalhóiros, 14D, Lisboa  
T. (+351) 924 478 387  
info@lisbonpoint.com  
www.lisbonpoint.com

**MOTOEXPLORERS**

Rua Francisco Lyon de Castro, 14C,  
Lisboa  
T. (+351) 210 143 101  
mail@motoexplorer.com  
www.motoexplorers.com

**PARKING****CAIÇADA DO COMBRO**

Caíçada do Combro, 70-78, Lisboa  
T. (+351) 211 163 060  
www.emel.pt

**PORTAS DO SOL**

Beco de Sta. Helena, Miradouro  
das Portas do Sol, Alfama, Lisboa  
T. (+351) 211 163 060  
www.emel.pt

**CHÃO DO LOUREIRO**

Largo da Atafona e Calçada Marquês  
de Tancos, Lisboa  
T. (+351) 211 163 060  
www.emel.pt

**BY AIR****EXQUISITE TRIPS**

Praceta Ferreira Borges, 10, R/C Esq.,  
Amadora  
T. (+351) 968 701 497  
virtuousland2022@gmail.com  
www.exquisite-trips.com

**LISBON HELICOPTERS**

Passeio Marítimo de Algés, Heliporto  
(near the air control tower), Algés  
T. (+351) 962 966 834/917 225 995  
info@lisbonhelicopters.com  
www.lisbonhelicopters.com

**BY BOAT****À GRANDE-WATER X WATER**

Experiences in Portugal  
Doca de Santo Amaro, Armazém 3,  
Lisboa  
T. (+351) 214 668 808  
reservas@waterx.co.pt  
www.waterx.co.pt

**ANTHIA DIVING CENTER**

Porto de Abrigo de Sesimbra, Loja 1,  
Sesimbra  
T. (+351) 212 443 472  
info@anthiadiving.com  
www.anthiadiving.com

**AQUARAMA**

Porto de Abrigo de Sesimbra  
T. (+351) 965 263 157  
info@aquarama.com  
www.aquarama.com

**BARCO CONFEITARIA NACIONAL**

Cais da Princesa  
(near Torre de Belém), Lisboa  
T. (+351) 911 798 595  
info@confeitarianacional.com

**CARRISTUR****LISBOA CARD PARTNER**

T. (+351) 213 613 193  
www.yellowbustours.com



**DREAMBOATS**

Rua Dr. Pereira Coutinho, 474 B,  
Amoreira, Alcabideche  
T. (+351) 914 256 002  
dreamboats@dreamboats.com.pt  
www.dreamboats.com.pt

**FRS**

**LISBOA CARD PARTNER**  
Av. da Liberdade, 38, 2.º, Lisboa  
T. (+351) 210 201 565  
info@frs-portugal.pt  
www.frs-portugal.pt

**GO FISHING PORTUGAL**

Almada Business Center  
Rua Marcos de Assunção,  
7 E, Almada  
T. (+351) 212 742 292  
info@gofishing.pt  
www.gofishing.pt

**GO SAILING LISBOA**

Doca de Alcântara, Lisboa  
T. (+351) 927 775 127  
go.sailing.lisboa@gmail.com

**HALIOTIS**

Casal da Ponte, Atouguia da Baleia,  
Peniche  
T. (+351) 262 781 160  
peniche@haliotis.pt  
www.haliotis.pt

**HIPPOTRIP**

**LISBOA CARD PARTNER**  
Rua do Açúcar, 76,  
Armazém 23, Lisboa  
T. (+351) 211 922 030  
info@hippotrip.com  
www.hippotrip.com

**LEÃO HOLANDÊS / WESTENWIND**

Doca de Alcântara / Doca do  
Espanhol, Lisboa  
T. (+351) 917 862 663  
gesinkturismo@gmail.com  
www.leaoholandes.com

**LISBOAT**

**LISBOA CARD PARTNER**  
Hop on Hop off no Tejo  
Cais de Embarque/Desembarque  
Cais da Princesa  
(near Torre de Belém)  
Cais do Sodré (Terminal Fluvial)  
T. (+351) 918 374 808  
elvira.ramos@miraclehorizon.pt

**LISBON BY BOAT**

**LISBOA CARD PARTNER**  
Doca de Belém, Lisboa  
T. (+351) 933 914 740/1/2/3  
lisbonbyboat@gmail.com  
www.lisbonbyboat.com

**NOSSO TEJO - LISBON  
TRADITIONAL BOAT TOURS**

**LISBOA CARD PARTNER**  
Estação Sul e Sueste  
Av. Infante Dom Henrique, 1B, Lisboa  
T. (+351) 910 501 012  
info@nossotejo.pt  
www.nossotejo.pt

**LISBON SIGHT SAILING**

Doca do Bom Sucesso, Belém  
T. (+351) 216 051 078  
info@lisbonsightsailing.com  
www.lisbonsightsailing.com

**PACIFICO CRUISES**

Av. D. Dinis 68-A, C.C. Oceano,  
Loja 75, Odivelas  
T. (+351) 925 131 456  
pacificocruises.reservas@gmail.com  
www.pacificocruises.pt

**PALMAYACHTS**

**LISBOA CARD PARTNER**  
Av. Brasília - Doca de Belém, Lisboa  
T. (+351) 937 065 280  
info@palmayachts.pt  
www.palmayachts.pt

**PORTUGAL DIVE**

Av. Estados Unidos da América, 2,  
Porta 3, 2.ªA, Lisboa  
T. (+351) 964 643 858  
arlindo.serrao@portugaldive.com  
www.portugaldive.com

**RENT A BOAT**

Av. Brasília, Doca de Belém, Lisboa  
T. (+351) 935 026 070  
info@rentaboat.pt  
www.rentaboat.pt

**ROTAS DO SAL**

Tróia  
T. (+351) 938 122 190  
info@rotasdosal.pt  
www.rotasdosal.pt

**SADO ARRÁBIDA**

**LISBOA CARD PARTNER**  
CCI N.º 3700, Carrasqueira, Comporta  
T. (+351) 919 558 535  
geral@sadoarrabida.pt  
www.sadoarrabida.pt

**SEAE0-TOURS**

Av. Brasília, Doca de Santo Amaro,  
Gate 3, Lisboa  
T. (+351) 919 195 486  
info@seae0-tours.pt  
www.seae0-tours.pt

**SEALIFE LOVERS**

Rua Fran Pacheco, 62, Setúbal  
T. (+351) 265 418 935  
geral@sealifelovers.com  
www.sealifelovers.com

**SEAVENTY**

Rua Marcelino Mesquita, 11,  
Alto de Santa Catarina, Linda-a-Velha  
info@seaventy.pt  
www.seaventy.pt

**SETÚBAL ALIVE**

**LISBOA CARD PARTNER**  
Av. Baía de Setúbal, Doca das  
Fontainhas, Setúbal  
T. (+351) 967 622 469  
setubalalive@gmail.com  
www.setubalalive.com

**TAGUS CRUISES**

Edifício Vela Latina, Loja 10 (ext),  
Doca do Bom Sucesso, Lisboa  
T. (+351) 925 610 034  
taguscruises@taguscruises.com  
www.taguscruises.com

**TRULY AMAZING**

Praceta João Villaret, 1,  
Costa de Caparica  
T. (+351) 964 015 415  
geral@trulyamazing.pt  
trulyamazing.pt

**VERTIGEM AZUL**

**LISBOA CARD PARTNER**  
Rua Praia da Saúde, 11D,  
Loja 10, Setúbal  
T. (+351) 265 238 000  
vertigemazul@mail.telepac.pt  
www.vertigemazul.com

## GET TO KNOW LISBOA

### YACHT OCEAN CLUB

Rua da Azinheira, Banda C, 207, Troia  
T. (+351) 937 614 223  
geral@yachtocceanclub.pt  
yachtocceanclub.pt

### YACHT SAILING LISBON

Marina de Cascais, Cascais  
T. (+351) 936 478 020  
yachtsailinglisbon@gmail.com  
www.yachtsailinglisbon.com

### WILD CAT

T. (+351) 212 439 281  
info@veltagus.com  
www.veltagus.com

## BY ROAD

### ABC TRAVEL

Praceta Coelho Seabra, 4, Damaia  
T. (+351) 918 206 330  
info@abctravel.pt  
www.abctravel.pt

### ACC TOURS

Rua Alexandre Braga, 29, 3.º Esq.,  
Lisboa  
T. (+351) 912 892 897  
info@acctours.pt  
www.acctours.pt

### ALFACINHA LX

T. (+351) 924 042 059  
info@alfacinhalx.com  
www.alfacinhalx.com

### AROUND LISBON

Rua 1.º de Maio, 22, Buraca  
T. (+351) 963 934 487  
info@aroundlisbon.pt  
www.aroundlisbon.pt

### BADGER TOURS

Estrada Nacional, 379, Lisboa  
T. (+351) 212 686 001  
badger.tours@texugauto.com  
www.texugauto.com

### BIKES&COMPANY

Rua dos Douradores, 16, Lisboa  
T. (+351) 210 965 030  
reservations@boostportugal.com  
www.bikes-company.com

### BIRDS & NATURE TOURS

Birdwatching Tours  
T. (+351) 913 299 990  
booking@birds.pt  
www.birds.pt

### BSLDRIVERS

Rua Paz, 5A, Loures  
T. (+351) 963 199 993  
geral@memoriasemuralhas.pt  
www.memoriasemuralhas.pt

### BY MORAZZO TOURS

Travessa da Padeira, 2, Assafora,  
São João das Lampas  
T. (+351) 918 507 885  
bymorazzotours@gmail.com

### CELINA TOURS

Av. Estados Unidos da América,  
142, 1.º Dto., Lisboa  
T. (+351) 919 946 213  
info@celina-tours.com  
www.celina-tours.com

### CITYRAMA & GRAY LINE

**LISBOA CARD PARTNER**  
Rua Forças Armadas, Lote 21,  
Camarate  
T. (+351) 213 191 090  
circuitos@cityrama.pt  
www.cityrama.com

### COMBOIO TURÍSTICO DE SINTRA

Volta do Duche, Sintra  
T. (+351) 918 258 001  
geral@comboiodesintra.pt  
www.comboiodesintra.pt

### COOLTOUR LISBON

**LISBOA CARD PARTNER**  
Travessa Miguel Verdial, 14 B, Lisboa  
T. (+351) 91452 09 56  
info.lisbon@thecooltours.com  
www.thecooltours.com

### DISCOVER LISBON

Rua da Atalaia, 204, Lisboa  
T. (+351) 933 483 634  
info@discoverlisbon.org  
www.discoverlisbon.org

### DIVE CLUB CIPREIA

Edifício Clube Naval  
– Porto de Abrigo, Sesimbra  
T. (+351) 218 435 580  
info@diveclubcipreia.com  
www.diveclubcipreia.com

### DOURO ACIMA

**LISBOA CARD PARTNER**  
Rua Professor Henrique de Barros,  
9C e 9D, Prior Velho  
T. (+351) 222 006 418  
geral@douroacima.pt  
www.douroacima.pt

### DUCA

Av. de Roma, 131,  
Anços, Sintra  
T. (+351) 963 695 200  
geral@duca.pt  
www.duca.pt

### ECO TUK TOURS

Rua dos Douradores, 16, Lisboa  
T. (+351) 914 925 450 / 914 925 472  
info@ecotuktours.com  
www.ecotuktours.com

### ESSÊNCIA DA LATITUDE

Rua Paul Harris, 3, 2.ºC, Lisboa  
T. (+351) 938 164 042  
geral@essenciadalatitude.com  
www.essenciadalatitude.com

### ESTRELA D'ALVA TOURS

**LISBOA CARD PARTNER**  
Av. da República, 97, R/C, Lisboa  
T. (+351) 967 852 921  
filomena.farinha@estreladalva.pt  
www.estreladalva.pt

### GO CAR TOURS

**LISBOA CARD PARTNER**  
Rua dos Douradores, 16, Lisboa  
T. (+351) 210 965 030  
reservations-pt@gocartours.com  
www.gocartours.com

### GO2CINTRA

Rua Veiga da Cunha, 24, Sintra  
T. (+351) 917 855 428  
geral@go2cintra.com  
www.go2cintra.com

### GO TO GO - TOURS

Rua Prof. Mira Fernandes,  
11 R/C Esq., Lisboa  
T. (+351) 963 366 006  
gotogolisbon@gmail.com

### HI LISBON WALKING TOURS

Largo Professor Pulido Valente, 16,  
2.º Esq., Linda-a-Velha  
T. (+351) 939 102 917  
hilisbonwalkingtours@gmail.com  
www.hilisbonwalkingtours.com

### IGO PORTUGAL

Praça São João, 3, 7.º Esq., Lisboa  
T. (+351) 213 872 217  
info@igoportugal.pt  
www.igoportugal.pt

**INSIDE LISBON TOURS****LISBOA CARD PARTNER**

Campo Pequeno, 48, 6.º Dto., Lisboa  
T. (+351) 211 914 545  
info@insidelisbon.com  
www.insidelisbon.com

**LIMOUTOURS**

Rua 25 de Abril, 12,  
Bairro dos Marinheiros, Setúbal  
T. (+351) 917 720 565  
limoutours@gmail.com

**LIMOUTRAVEL CHAUFFER SERVICE**

Rua D. João II, 20,1.º, Queluz de Baixo  
T. (+351) 967 001 700  
limoutravel@gmail.com  
www.limoutravel.com

**LISAWAY TOURS & RENT**

Rua do Cais de Santarém, 28 R/C,  
Lisboa  
T. (+351) 963 263 141  
lisawaytours@gmail.com

**LISBOA TOURS PASSEIOS TURISTICOS**

Rua Prof. Agostinho da Silva, 3, 2ª  
Cave Dir., Mem Martins, Sintra  
T. (+351) 962 807 223  
geral@lisboatours.com.pt  
www.lisboatours.com.pt

**LISBOA AUTÊNTICA**

Rua de São Julião, 12, 1.º Frente,  
Lisboa  
T. (+351) 913 221 790  
info@lisboaaautentica.com  
www.lisboaaautentica.com

**LISBON BIKE TOUR & OUTDOORS**

Largo Ana de Castro Osório,  
1, 1.º D, Caxias  
T. (+351) 912 272 300  
info@lisbonbiketour.com  
www.lisbonbiketour.com

**LISBON BY SEGWAY**

Rua dos Douradores, 16, Lisboa  
T. (+351) 210 965 030  
lisboa@lisbonbysegway.com  
www.lisbonbysegway.com

**LISBON DESTINATION TOURS****LISBOA CARD PARTNER**

Largo Duque do Cadaval, 17, Lisboa  
T. (+351) 210 997 735 /  
914 860 702  
info@lisbondestinationtours.com  
www.lisbondestinationtours.com

**LISBON WALKER****LISBOA CARD PARTNER**

Rua do Jardim do Tabaco, 126,  
Sobreloja, Lisboa  
T. (+351) 218 861 840  
info@lisbonwalker.com  
www.lisbonwalker.com

**LITTLE LISBON – LISBON FOR KIDS**

Rua Henrique Alves, nº 1, 1.ºC, Lisboa  
T. (+351) 912 800 647  
info@lisbonforkids.com  
www.lisbonforkids.com

**LOCAL TUK TUK**

Edifício Aviz, Av. Fontes Pereira de  
Melo, 35, 4.ºA, Lisboa  
T. (+351) 210 118 282  
F. (+351) 212 460 971  
lisboa@localtuktuk.com  
www.localtuktuk.com

**MADN TOURS**

Rua Quinta do Jacinto 23, 3.º Dto.,  
Lisboa  
T. (+351) 934 177 531  
info@touritalianolisbona.com  
www.touritalianolisbona.com

**MY LISBON TOURS**

Av. Óscar Monteiro Torres, 60, 2D,  
Lisboa  
T. (+351) 910 874 714  
info@mylisbontours.com  
www.mylisbontours.com

**NATURWAY****LISBOA CARD PARTNER**

Rua Professor Eduardo Araújo Coelho,  
4, Estúdio B, Lisboa  
T. (+351) 213 918 090  
geral@naturway.pt  
www.naturway.pt

**ONCE UPON A DAY**

EN 10 KM 33,5, Setúbal  
T. (+351) 213 254 040  
estevalda@gmail.com

**ORIGINAL LISBON TOURS**

Travessa dos Lagares, 16, 2.º, Lisboa  
T. (+351) 916 060 768  
originalxtours@gmail.com  
www.lisbon-chillout-freetour.com

**PIC MY DAY**

Rua Viriato, 27, 5.ºC, Lisboa  
T. (+351) 213 521 100  
geral@picmyday.pt  
www.picmyday.pt

**PORTUGAL ROTAS E TOURS**

Azinhaga dos Lameiros,  
15, Armazém 3A, Lisboa  
T. (+351) 217 552 861  
tours@portugalrotasetours.com  
www.portugalrotasetours.com

**PORTUGUESE FOR A DAY TOURS**

Rua Quinta da Gaia, 7, 1.º Dto,  
Vialonga  
T. (+351) 913 958 803  
info@portugueseforadaytours.com  
www.portugueseforadaytours.com

**SAL**

Av. Bento Gonçalves 9, 2.º Esq.,  
Setúbal  
T. (+351) 919 361 725  
sal@sal.pt  
www.sal.pt

**SANDEMANS NEW EUROPE TOURS**

Rua Arco Marquês Alegrete, 2  
Palácio dos Aboim  
1100-034 Lisboa  
info@neweuropetours.eu  
www.newlisbontours.com

**SEGWAY TEJO**

Rua das Olarias, 35, Lisboa  
T. (+351) 964 483 321  
segwaytejo@tejotourism.pt  
www.tejotourism.pt

**SELECTION TOURS****LISBOA CARD PARTNER**

Rua Tierno Galvan, 9, Lisboa  
T. (+351) 965 802 459  
tours@selectiontours.com  
www.selectiontours.com

## GET TO KNOW LISBOA

### SITGO

Rua Mário Dionísio, 9A, Lisboa  
T. (+351) 936 127 609  
operations@sitgo.pt  
www.sitgo.pt

### SMARTBUS

Rua José Travassos, 15 B, Lisboa  
T. (+351) 919 598 010  
geral@smartbus.pt  
www.smartbus.pt

### SMART SIGHTSEEING

Rua do Comércio, 170, Lisboa  
T. (+351) 913 912 163  
info@smartsightseeing.pt  
www.smartsightseeing.pt

### TÁ NO IR

Estrada do Macieira, 2,  
C/V Esq., Sintra  
T. (+351) 969 051 959  
geral@tanoir.com.pt  
www.tanoir.com.pt

### TAKE LISBOA FREE TOURS

Rua João do Outeiro, 58 R/C, Lisboa  
T. (+351) 914 059 080  
hello@takefreetours.com  
www.takefreetours.com

### TEJO TOURS

Rua das Olarias, 35, Lisboa  
T. (+351) 964 483 321  
tejotours@tejotourism.pt  
www.tejotourism.pt

### TIME TRAVELLERS

Av. General Roçadas, 157,  
8.º, Lisboa  
T. (+351) 965 107 138  
geral@timetravellers.pt  
www.timetravellers.pt

### TOURS OF MY LIFE

Av. Rio de Janeiro, 18, 1.º Dto, Lisboa  
T. (+351) 912 816 661  
toursofmylife.lisbon@gmail.com  
www.toursofmylife.com

### TUGATRIPS

Rua Vale da Carrasqueira,  
9, 3.º, Ericeira  
T. (+351) 911 146 146  
geral@tugatrrips.com  
www.tugatrrips.com

### TUKGUIDE PORTUGAL

#### LISBOA CARD PARTNER

Rua do Instituto Industrial, 18, Lisboa  
T. (+351) 919 920 000  
reservas@tukguideportugal.pt  
www.tukguideportugal.pt

### TUK TUK TEJO

Rua das Olarias, 35, Lisboa  
T. (+351) 964 483 321  
tuktuktejo@tejotourism.pt  
www.tejotourism.pt

### TUPER

Rua Almirante Barroso,  
13, 2.º, Lisboa  
T. (+351) 213 511 750  
geral@tuper.pt  
www.tuper.pt

### UBTUK

Calçada da Tapada 110, 1.º Esq.,  
Lisboa  
T. (+351) 933 302 666  
hugofranco@rbridge.pt  
www.ubtuk.pt

### VANELLUS

Rua Marcelino Mesquita, 11, Loja 4,  
Escritório 1, Linda-a-Velha  
T. (+351) 213 632 048  
vanellus.geral@gmail.com  
vanellus.pt

### VERTENTE NATURAL

#### LISBOA CARD PARTNER

Apartado 1077, Santana, Sesimbra  
T. (+351) 210 848 919  
info@vertentenatural.com  
www.vertentenatural.com

### VOX CITY TOURS

Rua dos Douradores, 16, Lisboa  
T. (+351) 925 549 106  
vox@boostportugal.com  
www.portugalcitytours.com

### WALKBOX SELF-GUIDED TOURS

Alameda Alto da Barra, 32, Oeiras  
T. (+351) 916 193 008  
hello@walkboxapp.com  
www.walkboxapp.com

### WEEKEND TREASURE

Rua Almirante Sarmiento Rodrigues, 6,  
7.ºB, Lisboa  
T. (+351) 917 067 679  
info@weekendtreasure.pt  
www.weekendtreasure.pt

## SURF

### SURF PRO SURF SCHOOL

Praia da Mata/Praia do Norte,  
Costa da Caparica  
T. (+351) 939 219 023  
surfprosurfschool@gmail.com  
www.surfpro.pt

**ACADEMIA DE GOLFE DE LISBOA**

Azinhaga das Galhardas, Lisboa  
T. (+351) 217 960 108  
www.academiadegolfedelisboa.pt

**CLUBE DE GOLFE DO PAÇO DO LUMIAR**

Rua Formozinho Sanchez, 79, Lisboa  
T. (+351) 217 591 719  
www.golfepacodolumiar.pt

**OUTSIDE LISBOA****BELAS CLUBE DE CAMPO**

Alameda do Aqueduto, Club House, Belas  
T. (+351) 219 626 640  
www.belasclubedecampo.pt

**CAMPO DE GOLFE DO MONTADO**

Urbanização Golfe do Montado, Algeruz, Palmela  
T. (+351) 265 708 150  
www.montadoresort.com

**AROEIRA PINES CLASSIC E AROEIRA CHALLENGE**

Herdade da Aroeira, Charneca da Caparica  
T. (+351) 212 979 110  
www.aroeira.com

**CLUBE DE GOLFE DA QUINTA DA MARINHA**

Quinta da Marinha, Rua Clube, Casa 36, Cascais  
T. (+351) 214 860 180  
www.quintadamarinha.com

**DOLCE CAMPO REAL**

Dolce Campo Real, Rua do Campo, Turcifal  
T. (+351) 261 960 900  
www.dolcecamporeal.com

**GOLF ALDEIA DOS CAPUCHOS**

Largo Aldeia dos Capuchos, Costa da Caparica  
T. (+351) 212 909 046  
www.golfaldeiadoscapuchos.com

**GOLF DO ESTORIL**

Av. da República, Estoril  
T. (+351) 214 680 176  
www.palacioestorilhotel.com

**GUARDIAN SUCESSO GOLF**

Bom Sucesso, Vau, Óbidos  
T. (+351) 262 965 310  
www.guardiangolf.net

**LISBON SPORTS CLUB**

Casal da Carregueira, Belas  
T. (+351) 214 310 077  
www.lisbonclub.com

**OEIRAS GOLF E RESIDENCE**

Av. Casal de Cabanas, Lote 140, Barcarena  
T. (+351) 965 002 755  
www.orizontegolf.com

**OITAVOS DUNES - NATURAL LINKS GOLF**

Quinta da Marinha, Casa da Quinta, 25, Cascais  
T. (+351) 214 860 000  
www.oitavosdunes.pt

**PENHA LONGA GOLF**

Campo Atlântico  
Estrada da Lagoa Azul, Linhó, Sintra  
T. (+351) 219 249 031  
www.penhalonga.pt

**PESTANA BELOURA GOLFE**

Rua das Sesmarias, 3, Quinta da Beloura  
T. (+351) 219 106 350  
www.pestanagolf.com

**PRAIA D'EL REY GOLF & BEACH RESORT**

Av. Dona Inês de Castro, 1, Vale das Janelas, Amoreira, Óbidos  
T. (+351) 262 099 587  
www.praia-del-rey.com

**QUINTA DO PERU GOLF & COUNTRY CLUB**

Alameda da Serra, 2, Quinta do Conde, Sesimbra  
T. (+351) 212 134 320  
quintadoperu@reformosa.com  
www.clubgolfquintadoperu.com

**RIBAGOLFE LAKES E RIBAGOLFE OAKS**

Vargem Fresca, EN 119, Infantado Samora Correia  
T. (+351) 263 930 040  
www.ribagolfe.pt

**ROYAL ÓBIDOS GOLFE RESORT**

Cabeço da Serra, Vau, Óbidos  
T. (+351) 262 960 241  
www.royalobidos.com

**TROIAGOLF CHAMPIONSHIP COURSE**

Tróia Golf, Carvalhal, Tróia  
T. (+351) 265 494 024  
www.troiagolf.com

**WESTCLIFFS**

Av. Inês de Castro, 1, Óbidos,  
T. (+351) 262 905 152  
www.westcliffs.com

## SHOPPING

### SHOPPING CENTERS AND DEPARTMENT STORES

#### AMOREIRAS SHOPPING CENTER

##### LISBOA CARD PARTNER

Av. Engenheiro Duarte Pacheco,  
Lisboa  
T. (+351) 213 810 200  
www.amoreiras.com

#### ARMAZÉNS DO CHIADO

Rua do Carmo, 2, Lisboa  
T. (+351) 213 210 600  
armazensdochiado@multi.eu  
www.armazensdochiado.com

#### CASA DA GUIA

Estrada Nacional 247,  
Quinta São José da Guia, Cascais  
T. (+351) 214 843 215  
www.casadaquia.com

#### CENTRO COLOMBO

Av. Lusíada, Lisboa  
T. (+351) 217 113 636  
www.colombo.pt

#### CENTRO COMERCIAL CAMPO PEQUENO

Centro Lazer Campo Pequeno, Lisboa  
T. (+351) 217 998 450  
galeriacomercial@campopequeno.  
com  
www.campo Pequeno.com

#### CENTRO VASCO DA GAMA

Av. Dom João II, 40, Lisboa  
T. (+351) 218 930 600  
centrovascodagama@sonaesierra.  
com  
www.centrovascodagama.pt

#### EL CORTE INGLÉS DEPARTMENT STORES

##### LISBOA CARD PARTNER

Av. António Augusto de Aguiar, 31,  
Lisboa  
T. (+351) 213 171 700  
relacoespublicas@elcorteingles.pt  
www.elcorteingles.pt

#### FREEPORT LISBOA FASHION OUTLET

##### LISBOA CARD PARTNER

Av. Euro 2004, Alcochete  
T. (+351) 212 343 501  
freeport.info@viaoutlets.com  
www.freeportfashionoutlet.pt

### GASTRONOMY AND WINES

#### ADEGA MÃE

Estrada Nacional 8, Carvalhal,  
Torres Vedras  
T. (+351) 261 950 100  
geral@adegamae.pt  
www.adegamae.pt

#### CASA CADAVAL

Rua Vasco da Gama, Muge  
T. (+351) 243 588 040  
geral@casacadaval.pt  
www.casacadaval.pt

#### CASA SANTOS LIMA

Quinta da Boavista, Aldeia Galega  
da Merceana, Alenquer, Torres Vedras  
T. (+351) 263 760 621  
geral@casasantoslima.com  
www.casantoslima.com

#### COMISSÃO VITIVINÍCOLA DA REGIÃO DE LISBOA

Rua Cândido dos Reis, 1,  
Torres Vedras  
T. (+351) 261 316 724  
cvr.lisboa@mail.telepac.pt  
www.vinhosdelisboa.com

#### COMISSÃO REGIONAL DE VINHOS DA PENÍNSULA DE SETÚBAL

BlueBiz – Parque Empresarial da  
Península de Setúbal, Estrada Vale  
da Rosa, Edifício VII, R/C e Piso 1,  
Ala Nascente, Setúbal  
T. (+351) 212 337 100 /  
212 337 108  
geral@cvr-psetubal.com  
www.vinhosdapeninsuladesetubal.org

#### GARRAFEIRA NACIONAL

Rua de Santa Justa, 18, Lisboa  
T. (+351) 218 879 080  
info@garrafeiranacional.com  
www.garrafeiranacional.com

#### KISS THE COOK

Rua Rodrigues Faria, 103,  
Lx Factory, Lisboa  
T. (+351) 213 636 314  
contacto@kissthecook.pt  
www.kissthecook.pt

#### MANZWINE

Largo da Praça, 8A, Cheleiros  
T. (+351) 214 269 710  
info@manzwine.com  
www.manzwine.com

#### MERCEARIA DO VINHO

Travessa André Valente,  
4, Lisboa  
T. (+351) 213 460 732  
info@merceariadovinho.pt  
www.merceariadovinho.pt

#### QUINTA DE SANT'ANA

Rua Direita, 3, Gradil, Mafra  
T. (+351) 261 963 550  
geral@quintadesanta\_na.com  
www.quintadesantana.com

#### QUINTA DO SANGUINHAL

Quinta das Cerejeiras, Apartado 5,  
Bombarral  
T. (+351) 262 609 190  
info@vinhos-sanguinhal.pt  
www.vinhos-sanguinhal.pt

#### ROTA DE VINHOS DA PENÍNSULA DE SETÚBAL

Casa Mãe da Rota de Vinhos, Largo  
de São João Baptista, Palmela  
T. (+351) 212 334 398  
info@rotavinhossetubal.com  
www.rotavinhossetubal.com

#### SINGULARTRIPS

Av. Óscar Monteiro Torres,  
20, 2.º E, Lisboa  
T. (+351) 212 69 69 40/  
964 30 63 10  
singulartrips@gmail.com  
www.singulartrips.com

#### TAYLOR'S PORT

Rua Cais de Santarém, 4-6-8, Lisboa  
T. (+351) 218 863 105  
sprovas.lx.taylor@taylor.pt  
www.taylor.pt

#### VINIPTUGAL

##### LISBOA CARD PARTNER

Rua Mouzinho da Silveira, 5, Lisboa  
T. 213 569 890  
sala.ogival@viniportugal.pt  
www.viniportugal.pt

**WINE WITH A VIEW**

Travessa do Fiuza, 39  
 – porta 3, Lisboa  
 T. (+351) 939 315 778  
 barbara@winewithaview.pt  
 winewithaview.pt

**HANDICRAFTS****ELÉCTRICO DE LISBOA**

Lisbon tram original scale model  
 T. (+351) 914 980 251  
 electricodelisboa@hotmail.com

**LISBOA SHOP****LISBOA CARD PARTNER**

Rua do Arsenal, 7-15, Lisboa  
 T. (+351) 210 312 802  
 info@lismarketing.pt  
 www.visitlisboa.com

**FASHION****OUTRA FACE DA LUA**

Rua da Assunção, 22, Lisboa  
 T. (+351) 218 863 430  
 baixa@aoutrafacedalua.com  
 www.aoutrafacedalua.com

**JEWELLERY SHOP****JOALHARIA FERREIRA MARQUES**

Praça Dom Pedro IV, 7-9, Lisboa  
 T. (+351) 213 423 723  
 joferreiramarques@gmail.com

**MUSEU DA FILIGRANA****TEMPORARILY CLOSED**

Largo de São Carlos, 1, Lisboa  
 T. (+351) 917 772 385  
 lisboa@museudafiligrana.pt  
 www.museudafiligrana.pt

**OPTICIANS****OLHAR DE PRATA**

Av. Fontes Pereira de Melo, 21, Lisboa  
 T. (+351) 213 513 230  
 olhardeprata@gmail.com  
 www.olardeprata.pt

**PERFUMERY****PERFUMES E COMPANHIA  
(LOJA ROSSIO)**

Praça Dom Pedro IV, 45-50, Lisboa  
 T. (+351) 211 554 480  
 lojaonline@perfumesecompanhia.pt  
 www.perfumesecompanhia.pt

**MUSIC SHOP****CNM - COMPANHIA NACIONAL  
DE MÚSICA**

Rua Nova do Almada, 60-62, Lisboa  
 T. (+351) 213 420 918  
 geral@cnmusica.com  
 www.cnmusica.com

---

## CONCERTS

---



### Tinta y Tiempo

#### Jorge Drexler

---

2<sup>nd</sup> February; at 9 pm; Grande Auditório do Centro Cultural de Belém, Praça do Império (tram: 15 | bus: 714, 727, 728, 729, 751). Tickets: from 20 euros to 60 euros.

More information at: [ccb.pt](http://ccb.pt)

---

The Uruguayan singer and songwriter Jorge Drexler presents a new original show with Borja Barrueta (drums), Meritxell Neddermann (keyboard and vocals), Javier Calequi (guitar and vocals), Carles 'Campi' Campón (bass guitar and programming), as well as Alana Sinkëy and Miryam Latrece (vocals). 'Tinta y Tiempo' was created during lockdown, in a period of insecurity and uncertainty. Jorge Drexler chose to focus his composition on a lesson he drew from those times, moving towards a light-filled universe. The album was released less than a year ago, coinciding with the celebration of the artist's three-decade long career.



### Mistura

#### Katia Guerreiro

---

23<sup>rd</sup> February; at 9 pm; Tivoli BBVA, Av. da Liberdade, 182-188 (metro: Avenida). Tickets: from 10 to 25 euros.

More information at: [teatrotivolibbva.pt](http://teatrotivolibbva.pt)

---

Katia Guerreiro returns to the stage to present her most recent work 'Mistura', which is produced by José Mário Branco, Tiago Bettencourt and Pedro de Castro. According to the artist herself, her most recent work is 'a mix of saudade (longing), voices, colours and sounds, parties, loneliness, arrivals and departures, promises and disillusion, dreams and smiles, new lives and death'. The show presents musicians Pedro de Castro and Luís Guerreiro on Portuguese guitar, André Ramos and Francisco Gaspar on bass guitar.





## Linda Martini

10<sup>th</sup> February; at 9 pm; Lisboa ao Vivo, Av. Marechal Gomes da Costa (buses: 210, 750, 781). Tickets: 20 euros. More information at: [lisboaavivo.com](http://lisboaavivo.com)

As part of the celebration of their twenty-year long career and one year of the 'Errôr' tour, Linda Martini presents a special concert. This will be the start of a new tour, with one more element joining the group. The rock band is now composed of André Henriques on vocals and guitar, Cláudia Guerreiro on bass guitar and vocals, Hélio Morais on drums and vocals and, more recently, Rui Carvalho on guitar. The concert promises not to disappoint, to mix rhythmic strength and melodic sensibility as well as to explore the limits of sound and the instruments in order for the band to rediscover itself.

## Tributo Queen

24<sup>th</sup> February; at 9:30 pm; Coliseu de Lisboa, Rua das Portas de Santo Antão, 96 (metro: Restauradores). Tickets: from 31 to 40 euros. More information at: [coliseulisboa.com](http://coliseulisboa.com)

'We Are the Champions', 'I Want to Break Free', 'We Will Rock You', 'Bohemian Rhapsody' are some of the songs which will be heard in this concert. This tribute recreates the rock opera songs, the universal anthems and the ballads which put the band led by Freddie Mercury in number 1 of the hit lists for two decades. The band responsible for the show captures the original sound as well as Queen's personal style and stage presence. This concert, which relives remarkable moments of the 70s and 80s, is a unique opportunity to experience all of Queen's strength, emotion and musical genius.



# Harry Potter and the Half-Blood Prince

---

25<sup>th</sup> February; at 8:30 pm; Altice Arena, Parque das Nações (metro: Oriente | buses: 26B, 208, 210, 705, 708, 725, 728, 744, 759, 782 | train: Oriente). Tickets: from 29 to 100 euros. More information at: [arena.altice.pt](http://arena.altice.pt)

---

In 2023, the concert films of the J. K. Rowling saga return to Altice Arena. It is time for the presentation of the sixth film – 'Harry Potter and the Half-Blood Prince'. On stage, the Orquestra Filarmonia das Beiras, composed of more than 90 musicians, will play, live, the soundtrack which sets the rhythm for the sixth chapter of the story taking place in this magic world. At the same time, the film is shown in high definition on a 20-meter-wide and 8-meter-high screen.



## The Death of the Raven

Until 31<sup>st</sup> March; from Wednesday to Saturday; at 9 pm; Sundays; at 5 pm; Hospital Militar da Estrela, Rua Santo António à Estrela, 29 A (buses: 720, 738, 773 | trams: 25E, 28E). Tickets: 38 euros. More information at: [amortedocorvo.com](http://amortedocorvo.com)

More than a play, 'A Morte de um Corvo' is an immersive experience of visual, scenic and technological impact, which proposes a journey to 1924. The plot revolves around an anticipated funeral, the death of a Portuguese poet. It all begins when Fernando Pessoa invites Mário de Sá Carneiro to the initiation ritual into the Raven Association, a society which seeks the secret of life beyond death. The Association is led by Edgar Allan Poe, who is extremely jealous of Pessoa's popularity. Ofélia's rejection, Mário's death and the deep disbelief in himself, among other events, will make the poet sink into a depressive cycle which will end in his death.



## Frida Kahlo, the Immersive Biography

Until 31<sup>st</sup> December; from Tuesday to Sunday; between 5 pm and 8 pm; Reservatório da Mãe D'Água das Amoreiras, Praça das Amoreiras (metro: Rato | buses: 202, 758, 774, 713 | tram: 24). Tickets: 15 euros, general. More information at: [portugalagenda.com](http://portugalagenda.com)

Frida Kahlo, the Immersive Biography is more than an exhibition; it is the combination of physical and digital environments which become an immersive and emotional journey through the life of one of the most influential artists of all time. In this 360° multimedia show, there are virtual reality experiences and video mapping in sculptures and holographic animations. The showing is divided in two moments. First, the visitors have the opportunity to go through different artistic installations, among which we can find historical photographs and original films. The second moment is characterized by the 360° audio-visual projection about Frida Kahlo's personal life.



---

# Clandestine Body

---

16<sup>th</sup> and 17<sup>th</sup> February; at 9 pm; Auditório Emílio Rui Vilar, Culturgest, Rua Arco do Cego (metro: Campo Pequeno).

Tickets: 14 euros. More information at: [culturgest.pt](http://culturgest.pt)

---

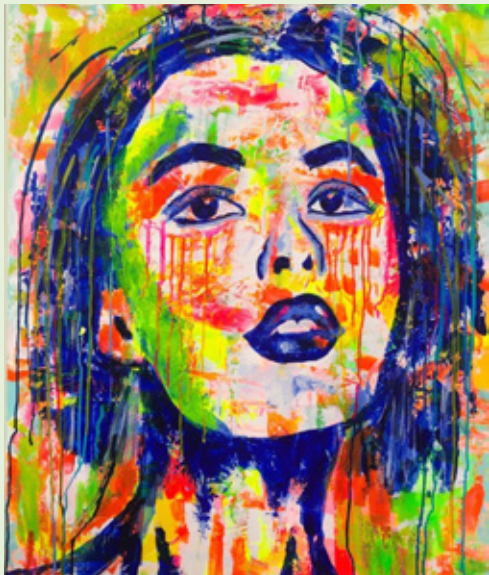
'Corpo Clandestino' is a performance which proposes to rethink the normativity of the body, making it a way of communication and sharing, instead of being reductive and standardized. Ana, Andreia, Gaya, Joãozinho, Mafalda, Paulo and Valter are the clandestine bodies which produce unforgettable images, becoming vehicles of identity. This performance brings to the stage things which usually do not belong on stage and doubles the attention on the performers, whose non-normative bodies create a landscape of a dance corps configured in opposition to the classical ideal.



## Jungle Book Reimagined

17<sup>th</sup> February; at 9 pm; 18<sup>th</sup> February; at 7 pm; Auditório Centro Cultural de Belém, Praça do Império (tram: 15 | bus: 714, 727, 728, 729, 751). Tickets: from 21 to 35 euros. More information at: [ccb.pt](http://ccb.pt)

Based on the original story of 'The Jungle Book', Akram Khan creates a new production of dance, theatre and visual technology. This time, Mowgli's journey is told through the eyes of a climate refugee. On stage, to the rhythm of an original soundtrack, a group of ten dancers tells the story of a family which runs away from its homeland because of the devastation caused by climate change. Alone in a modern but deserted city, where wild animals own the streets, the child quickly finds improbable allies in that strange new jungle.



### Dear tear

---

Until 21<sup>st</sup> February; from Monday to Wednesday; from 8 am to midnight; from Thursday to Saturday; from 8 am to 2 am, Fábrica Braço de Prata, Rua da Fábrica do Material de Guerra, 1, Marvila (train: Azambuja, Sintra line; station: Braço de Prata). Free entry. More information at: [bracodeprata.com](http://bracodeprata.com)

The artist Inês Assis has chosen emotions as the aggregating concept for this exhibition. In 'Dear tear', the artist, who is also a designer, embraces emotions in a healthy way. Composed of two cores, the exhibition is divided into an abstract construction and a figurative one, which main focus is the human face. Inês Assis uses the acrylic on canvas technique and, through the liveliness of the colours, gives the paintings a joy which the image lacks.



### In the Theatre of Emotions José Emídio

---

Until 12<sup>th</sup> February; from Tuesday to Friday; from 3 pm to 8 pm; Saturdays; from 3 pm to 6 pm; Galeria Eritage, Rua das Janelas Verdes, 128-B (buses: 713, 714, 727). Free entry. More information at: [eritageartprojects.com](http://eritageartprojects.com)

'No Teatro das Emoções' is the name of the exhibition which celebrates 40 years since the first solo showing by the artist José Emídio. Here we will find sets of works in different media, among which is an unprecedented series of six paintings. The artist characterizes his works through the representation of figures which are crucial to the representation of the space and the surroundings. Among oil paintings, carpets and ceramics, the used colours stand out, establishing themselves as essential to the narrative structure.



## The peculiar crime of oddball Mr. Jay

---

From 11<sup>th</sup> February to 30<sup>th</sup> June; from Wednesday to Sunday; from 10 am to 1 pm and from 2:30 pm to 5:30 pm;  
Fábrica das Artes, Centro Cultural de Belém, Praça do Império (tram: 15 | bus: 714, 727, 728, 729, 751).

Tickets: from 20 euros. More information at: [ccb.pt](http://ccb.pt)

---

In a city where nature has been forbidden, a small crime by a simple man triggers a chain of unexpected consequences. This exhibition reveals the behind-the-scenes of the almost 11minute long puppet short film directed by Bruno Caetano. The Portuguese film is one of the most shown all over the world, having participated in more than a hundred international festivals and won a dozen awards. Composed of streets, squares and façades of a miniature Lisboa, the exhibition shows several of the film's sets, as well as used models, casts and graphic research material. As part of the exhibition, it is also possible to see the short film.



Discover  
for yourself



---

## Carnival revelry in Lisboa

---

'Life lasts for two days and Carnival lasts for three': this Portuguese phrase is the one which best describes the potential of this festive time. Here, Carnival is synonym for children and adults dressing up, confetti and streamers flying around, a spirit of fun in the air, with pranks and lots of fun. There are several parties and traditions to celebrate this date. Parades in the streets, processions with floats and parties with much music set the rhythm of the revelry. Whether you choose to watch the celebrations and participate in them or prefer to take the days off to walk around the city, in Lisboa you will find the best options for this time of the year. For those who want to experience [Carnival in Lisboa](#), there are programmed parades which they can join. Mockery and ill-speaking prevail; in other words, the protagonists are caricatures which intend to ridicule certain national events or personalities. That is what happens in the parade starting at Estação do Rossio







(Rossio Station) and ending in Praça do Município, as well as in the parade which brings entertainment to Parque das Nações, until Alameda dos Oceanos. In addition to these two parades, there are many children's processions, mainly on the Friday prior to Carnival, which will bring much colour to the city's streets.

The party is also felt in Quiosque da Ribeira das Naus, at Cais do Sodré, with the presence of the group 'Carnaval Bué Tolo', with samba, funk and much partying. With or without costumes, there are night parties at Cais do Sodré and Bairro Alto. These neighbourhoods are already known for their night entertainment, but, during this time, the colours of the masks and the themes of the parties focus on Carnival. At the Feira Internacional de Lisboa (International Fair of Lisboa), at Parque das Nações, there will also be a party to mark the beginning of Carnival. On Saturday, under the theme Kaos Garden, big names of the electronic music scene go on stage, creating a show with costumes, lights, confetti and many gifts.

For those who are visiting Lisboa but want to enjoy these days away from the revelry and excitement, the suggestion would be to very calmly discover the historical neighbourhoods.

Go, for example, to Mouraria, walk through its streets and alleys and take a look at its hidden squares. Or go up to Castelo de São Jorge (Saint George's Castle) to enjoy the view over Lisboa, by the walls or even inside the centenary construction itself. There you can find an optical system of lenses and mirrors, which provides a 360° view of the city in real time. From here, look for a corner where you can get to know Lisboa's gastronomy, with the famous *bacalhau* (codfish) dishes, whether in form of *patanisca* (fried codfish coated in batter), shredded or à *Braz*, or also '*iscas com elas*' (liver steaks). For dessert, do not forget to try a *pastel de Belém* (Belém custard tart). The afternoon of these winter days can be enjoyed in a stroll along the river or in a boat trip on the Tejo. For those who prefer the green of the trees, the Estufa Fria (Cold Greenhouse) or the Jardim Botânico (Botanical Garden) are two places to put on the list.

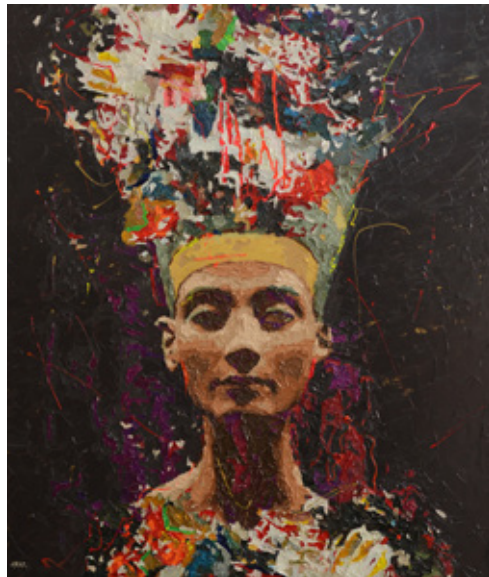
With or without revelry, Lisboa is always a good choice for a walk and to enjoy some days off. Get to know Carnival in Lisboa or make the best of the date to explore every corner of the city.

Find out for yourself.

---

## EXHIBITIONS

---



---

### EXIST/RESIST

---

Until 6<sup>th</sup> March; from Wednesday to Monday; from noon to 6 pm; MAAT – Museu de Arte, Arquitetura e Tecnologia, Av. Brasília (train: Cascais line, Belém station | buses: 728, 714, 727, 729, 751 | tram: 15). Tickets: general, 7 euros. More information at: [maat.pt](http://maat.pt)

---

EXIST/RESIST is the first institutional exhibition by Didier Fiúza Faustino. The French-Portuguese artist, known for the way in which he conceptually distances himself from architecture and design, presents an exhibition which takes its title from two of his works, 'Exist', from 2016, and 'Resist', from 2017. This showing brings together for the first time a selection of works and prototypes, which range from drawings, to photographs, large-scale installations and objects. Through installations, films, sculptures, editorial projects and temporary architecture, the artist presents the 'body' as a measure of individuality, an economic and political site of struggle.

---

### Pharaoh Superstars

---

Until 6<sup>th</sup> March; from Wednesday to Monday; from 10 am to 6 pm; Fundação Calouste Gulbenkian, Av. de Berna, 45A (metro: São Sebastião, Praça de Espanha | buses: 713, 716, 718, 726, 742, 746, 756). Tickets: 5 euros. More information at: [gulbenkian.pt](http://gulbenkian.pt)

---

What role does the figure of the pharaoh play as a symbol of the Ancient Egypt and an icon of celebrity? This exhibition tries to reflect on this figure which lives in our imagination. Tutankhamun, Ramses and Cleopatra are familiar names, thousands of years after their deaths. From classical antiquity to pop music, including the medieval period, this showing presents 250 pieces of different natures, which range from archaeological fragments to historical documents and works or contemporary objects, from important collections belonging to the British Museum, the Louvre Museum, the Museo Egizio, and some others.



## Not on the map?

Until 12<sup>th</sup> March; from Tuesday to Sunday; from 3 pm to 5 pm; Palácio Pimenta, Campo Grande (metro: Campo Grande | bus: 701, 717, 731, 735, 736, 738, 747, 750, 755, 767, 778, 783, 796, 798 ). Free entry. More information at: [museudelisboa.pt](http://museudelisboa.pt)

The doors to the garden of Palácio Pimenta open to welcome the exhibition 'Também estão no mapa?', an opportunity to reflect on some territories of the Lisboa Metropolitan Area. This exhibition presents the many possible narratives which the city maps may contain. It is seen as an opportunity for the less known or talked about areas to participate; they thus get a chance to establish themselves as different territorial representations and traditional narratives that we know but which are rarely mentioned.

## Bosch: Contemporary Temptations

Until 19<sup>th</sup> March; from Tuesday to Sunday; from 10 am to 6 pm; Museu Nacional de Arte Antiga; Rua das Janelas Verdes (buses: 713, 714, 727). Tickets: 6 euros, general. More information at: [museudearteantiga.pt](http://museudearteantiga.pt)

While the triptych 'The Temptations of Saint Anthony', by the Flemish painter Hieronymus Bosch, is on loan at the Palazzo Reale in Milan, the Museu Nacional de Arte Antiga (National Museum of Ancient Art) wanted to use the same space to give visibility to contemporary works which were directly inspired by a present-day perspective on the work. Until 19th January, the space will present a triptych by Pedro Portugal, from the Fundação EDP collection, and after that, until the end of the exhibition, a series of pieces purposely created by Pedro Zamith. The Museum thus tries to present two contemporary perspectives on the Temptations of Saint Anthony in the Desert, which in Portugal is called Santo Antão.



---

### Révolutions Xenakis

---

Until 27<sup>th</sup> March; from Wednesday to Monday; from 10 am to 6 pm; Fundação Calouste Gulbenkian, Av. de Berna, 45A (metro: São Sebastião, Praça de Espanha | buses: 713, 716, 718, 726, 742, 746, 756). Tickets: 3 euros.

More information at: [gulbenkian.pt](http://gulbenkian.pt)

---

Révolutions Xenakis is an exhibition which is part of the celebration of the birth centenary of Romanian composer Iannis Xenakis. The exhibition honours the different dimensions of the artist, mainly the architectures of sound he created over the course of his career. Xenakis is considered an avant-garde artist and is seen as one of the founders of digital art. He was composer, architect, engineer, mathematics and computer enthusiast, but he was also a pioneer in various fields, such as electroacoustic music or computer music. This exhibition is a digital art installation which functions as a short-circuit of the scenographic process, covering the ceiling and the walls of the gallery.



---

### Sometimes I stare at a rock...

---

Until 31<sup>st</sup> March; from Tuesday to Sunday; from 10 am to 6 pm; Museu Nacional de Arte Antiga, Rua das Janelas Verdes (buses: 713, 714, 727). Tickets: 6 euros, general.

More information at: [museudearteantiga.pt](http://museudearteantiga.pt)

---

To mark the anniversary of artist João Cutileiro's death, Teresa Segurado Pavão creates the exhibition 'Às vezes, ponho-me a olhar para uma pedra...!'. This showing is built around three concepts - fragment, memory and sculpture. It starts from a series of artistic objects, using clay as the element to integrate fragments which are the 'waste' from João Cutileiro's sculptures. The artist uses the potter's wheel to finish the pieces in order to evoke the lathe finishing Cutileiro applied to his sculptures and turns to iron for the connections between stone and ceramics (staples, spikes, links), alluding to the technique used by the sculptor in the structure of his works.



## A Life on Stage

### Peter Wächtler

Until 16<sup>th</sup> April; from Tuesday to Sunday; from 11 am to 6 pm; Culturgest, Rua Arco do Cego, 50 (metro: Campo Pequeno). Tickets: 5 euros. More information at: [culturgest.pt](http://culturgest.pt)

Peter Wächtler uses narrative and, above all, monologue as tools to create. The works by the German artist take us on a journey through a universe in which fantasy, fable and existentialism are allied in the creation of sets which explore a radical ambiguity. This exhibition is his first time in Portugal and celebrates a decade of works. Faced with his drawings, sculptures and films, one sometimes feels a certain dereliction. The characters from another time and with different manners reveal our disenchantments and expectations, embodying our collective anxiety and pointing the way to dream, imagination and allegory as the right paths to redemption.

## Dinosaurs

### The Return of the Giants

Until September; from Tuesday to Friday; from 10 am to 6 pm; last entry at 5:30 pm; weekends; from 10 am to 7 pm; last entry at 6:30 pm; Pavilhão do Conhecimento, Centro Ciência Viva, Largo José Mariano Gago (metro: Oriente | buses: 400, 705, 708, 725, 728, 744, 750, 759, 782, 794). Tickets: 11 euros, general; children up to 11 years of age and seniors, 8 euros. More information at: [pavconhecimento.pt](http://pavconhecimento.pt)

Which dinosaur species lived in Portugal millions of years ago? Grab brushes and shovels and enter the Palaeontology world at the Pavilhão do Conhecimento (Pavilion of Knowledge). In an intrepid journey to the Mesozoic Era, see up close a life-size representation of the most charismatic dinosaurs, such as the Tyrannosaurus rex and the Triceratops. Through the different stations, which range from the campaign tent to the laboratory, the visitors can participate in an excavation, discover the sounds of the Cretaceous, make a scientific illustration of a dinosaur and reconstruct its skeleton.

.....  
**FOLLOW ME**  
LISBOA  
.....

**PROPRIETOR**

TURISMO DE LISBOA  
T. +351 210 312 700  
Fax: +351 210 312 899  
www.visitlisboa.com  
atl@visitlisboa.com  
NIF: 501 880 160

**DIRECTOR**

PAULA OLIVEIRA

N.º 318 | FEBRUARY 2023

**ADVERTISING**

LISMARKETING  
info@lismarketing.pt  
T. (+351) 210 312 800

**EDITOR | EDITORIAL DEPT.**



Edifício Lisboa Oriente  
Av. Infante D. Henrique, 333 H, 49  
1800-282 Lisboa  
T. (+351) 218 508 110  
Fax: (+351) 218 530 426  
lpmcom@lpmcom.pt

**SECRETARY**

Ana Paula Pais  
T. (+351) 218 508 110  
followmelisboa@lpmcom.pt

Follow Me Lisboa adopts the format exclusively by promotional vehicle of Tourism in the city of Lisboa.

The information given on shows and equipment is provided by the organisers of the events. The publisher cannot be held responsible for any cancellations or changes that may be made in the programs and events, or for possible alterations in dates, times and content.



# The Masks of the Body

Until 10<sup>th</sup> February, from Tuesday to Friday, from 2 pm to 6:30 pm; Saturdays and Sundays, from 10 am to 2 pm; Lisboa, MOVART Gallery, Rua João Penha (metro: Rato | buses: 706, 709, 774). Free entry. More information at: [gallery@movart.co.ao](mailto:gallery@movart.co.ao)

'As Máscaras do Corpo' is an exhibition with brings together a series of works from the MOVART gallery's collection. The different artists represent the body through an association of reflections on the different modalities of corporeality. The mask may be connected to the identity issue, to a way of representation created in a theatrical or psychological context, but it can also represent the externalization towards the other, as a concealment of experiences. The selection of works by different artists occupies the exterior and interior space of the gallery, revealing different artistic proposals, which move between diverse memories and different ways of expression.

## CHAVES DE OURO DE PORTUGAL

Les Clefs d'Or Portugal - The Golden Keys  
Portuguese Concierge Association



Professionals at  
your Concierge Desk  
to help and give you  
the best service

[www.chavesdeouro.org](http://www.chavesdeouro.org)



Open  
every day  
from  
**10<sub>am</sub>** to **6<sub>pm</sub>**

## *Royal Treasury Museum. Crown Jewels*



MUSEU  
TESOURO  
REAL

PALÁCIO  
NACIONAL  
DA AJUDA

**PATRIMÓNIO  
CULTURAL**  
Direção-Geral do Património Cultural



Palácio Nacional da Ajuda - Lisboa